

THOUSANDS OF CAPS & PLUGS – TRY BEFORE YOU BUY

- A large range of profiles, dimensions and materials to suit your applications
- Easy fitting and removal to provide a cost-effective solution
- Custom solutions available, designed to match your precise needs



**FREE
SAMPLES**



12



18



25



29



30



30



34



36



38



41



45



46



50



54



60



62



65

MORE THAN
2,000
CAPS AND PLUGS
PRODUCTS
AVAILABLE

CAPS AND PLUGS



TAPERED CAPS/PLUGS

012



PUSH FIT PLUGS

022



PUSH FIT CAPS

041



THREADED PLUGS

054



THREADED CAPS

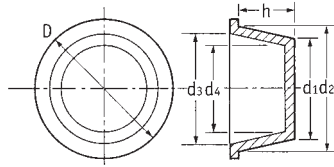
062

TAPERED CAPS/PLUGS

Tapered Caps/Plugs

SR 1000

Red LDPE



- Use as cap or plug
- Easy fitting and removal
- Over 140 sizes
- Provide excellent protection from damage, dirt, moisture and corrosion during storage and transportation

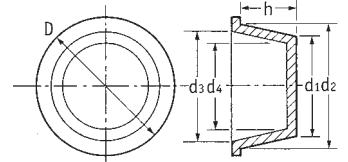
Part Number	Dimensions (mm)						Standard Pack Quantity
	d1	d2	d3	d4	D	h	
10836	2.9	4.6	3.0	1.3	7.9	9.5	10000
10991	4.4	6.1	4.5	2.8	9.5	9.5	10000
50222	4.7	8.5	5.7	2.5	11.7	22.5	10000
12419	5.6	7.0	5.4	4.0	10.5	8.4	10000
10727	6.2	7.6	5.9	5.0	11.1	9.5	10000
12482	7.7	9.3	7.0	5.5	12.7	8.0	10000
10549	7.7	9.1	7.7	6.3	12.7	9.5	5000
10289	8.4	10.0	8.2	6.9	13.5	9.5	10000
12562	8.6	10.3	8.2	7.0	13.7	9.8	10000
12483	9.0	10.7	8.8	7.5	13.9	11.5	10000
10325	9.4	10.8	9.3	7.7	14.0	8.5	10000
10750	10.0	11.8	10.0	8.5	15.0	9.5	10000
12420	10.6	12.2	10.0	8.6	15.6	9.8	10000
10114	10.9	12.3	10.7	9.1	15.9	9.3	10000
12421	11.2	14.0	12.1	9.2	17.5	18.5	5000
12422	11.3	12.9	10.9	9.4	16.3	8.5	10000
10421	11.3	13.2	11.6	9.8	17.0	11.0	10000
10174	11.5	13.0	11.5	10.0	16.7	9.5	10000
12901	12.0	14.8	12.0	10.5	17.5	11.0	5000
10237	12.1	13.9	12.3	10.6	17.5	11.0	5000
12563	12.5	14.0	12.0	10.5	17.5	8.9	5000
15137	12.8	15.1	13.2	10.7	18.5	23.1	4000
10438	13.6	15.3	13.7	12.1	19.0	11.2	5000
10342	14.2	16.0	14.4	12.7	19.0	12.1	5000
10424	14.7	17.0	15.4	13.2	20.6	12.7	5000
12481	14.9	16.4	14.5	13.5	21.0	11.5	5000
12423	15.5	17.1	15.0	13.4	20.6	8.5	5000
12564	16.1	17.6	15.5	14.5	21.0	8.5	5000
11139	16.4	18.3	16.9	14.3	22.2	12.3	5000
12196	16.6	18.5	16.5	14.5	21.9	13.0	6000
110197	17.1	19.4	17.8	15.5	22.0	13.0	6500
12197	17.2	20.2	18.0	15.5	24.2	18.0	4000
110198	17.5	20.1	18.5	15.9	24.0	14.5	5000
11088	17.7	19.6	17.3	15.2	22.2	12.7	5000
10394	17.8	20.0	18.3	16.4	23.8	13.4	5000
12424	18.3	21.4	19.3	16.4	25.4	17.5	4000
10208	18.5	20.9	19.3	17.1	24.6	14.3	5000
10728	19.0	21.5	19.7	17.6	25.8	14.3	4000
12925	19.4	22.5	21.3	18.0	26.5	19.0	3000
12425	20.5	23.2	21.2	18.5	27.2	17.5	3000
52071	21.2	23.2	21.7	19.3	27.3	12.3	4000
10676	21.3	23.2	21.5	19.2	27.0	15.9	3000
110200	22.0	24.8	23.2	20.4	29.0	17.0	3000
10376	22.0	25.0	23.0	20.5	28.5	15.9	3000
12565	22.5	25.5	23.3	20.0	28.9	17.8	3000
12426	22.7	24.9	22.7	20.8	27.0	12.0	3000
10136	23.4	26.4	24.4	21.4	29.3	17.5	2500
12427	24.0	26.9	25.0	21.9	31.0	18.0	2000
12567	24.6	29.5	27.5	22.5	34.0	27.5	1500
10732	24.7	27.7	26.1	23.2	32.0	19.0	2000
110201	25.2	29.2	27.7	23.7	33.0	19.0	1500
12999	26.6	29.7	28.3	24.6	31.6	26.3	1500
10250	28.0	30.9	29.0	26.5	35.3	19.0	2000
11173	29.2	31.2	30.3	28.0	34.7	12.7	2000

To Fit Thread Size	
As Cap	As Plug
-	-
M4	¼" UNF
-	-
M6	M8, ⅜" UNF
¼" UNF	-
-	⅝" UNF
M8	M10
-	-
-	-
⅝" UNF	M12
-	-
⅞" BSP	¼" BSP, ½" UNF
-	-
-	-
-	-
-	M14 x 1.5
-	-
M12	⅜" UNF
⅞" UNF	-
-	-
¼" BSP, ½" UNF	M16
M14	⅝" BSP
-	M18 x 1.5
-	-
-	-
-	-
-	-
M16, ⅝" UNF	¾" UNF
-	-
⅝" BSP	M20 x 1.5
-	-
M18 x 1.5, M18	½" BSP
⅝" BSP	M20
M18	½" BSP
-	-
¾" UNF	M22 x 1.5
-	M22 x 1.5, ⅞" UNF
-	-
-	-
-	M24
M20 x 2.5, 1½"	⅝" BSP
M22 x 1.5	-
M22	1" UNF
⅞" UNF	-
-	-
M24	¾" BSP, M27, M26
-	-
-	-
M25, 1" UNF	M28, M30, 1⅜" UNF
-	-
¾" BSP	⅞" BSP
M27, M28	M30 x 1.5
M22 x 2	-

CONTINUED ON NEXT PAGE

Tapered Caps/Plugs *CONTINUED*

SR 1000



Part Number	Dimensions (mm)						Standard Pack Quantity
	d1	d2	d3	d4	D	h	
10272	30.0	32.6	30.7	27.5	36.7	15.2	2000
12428	30.5	33.3	31.1	28.4	37.0	14.5	2000
12568	31.1	34.3	32.0	29.3	38.1	17.5	1500
10154	31.1	34.4	32.8	29.8	38.1	19.0	1500
12569	31.6	36.3	34.0	29.8	40.2	24.1	1000
11167	33.3	34.4	32.8	31.4	38.1	9.5	2500
10181	33.3	37.2	35.6	31.7	41.6	22.2	1000
12480	33.9	38.3	36.5	31.9	42.3	24.5	1000
10838	33.9	37.3	35.8	32.0	42.2	12.3	2000
12198	34.9	36.4	35.2	33.1	42.7	8.2	2500
12570	35.9	40.2	37.5	33.2	44.1	24.5	1000
15138	36.3	38.3	37.0	34.6	42.3	12.0	1500
10491	36.9	40.6	39.0	35.0	44.0	22.5	1000
11115	38.6	40.6	39.0	37.1	44.5	12.7	1500
10485	39.6	42.7	41.1	38.2	47.6	18.5	1000
12429	40.8	44.7	41.8	37.7	49.0	24.0	500
10252	41.4	44.8	43.0	39.7	49.2	19.0	1000
11172†	42.5	44.8	43.0	40.7	50.7	12.6	1000
15139	43.4	48.5	47.0	42.0	53.3	24.5	600
10812	44.1	46.7	45.7	42.8	49.8	18.4	800
110204	44.4	47.7	46.1	42.8	51.0	19.0	1500
10168	45.2	49.0	47.0	43.7	53.4	24.5	600
10439	45.9	46.3	45.0	44.3	50.8	9.5	1500
15136	46.0	50.0	48.0	44.3	54.0	24.8	500
12430	47.2	51.9	48.7	44.5	55.8	24.0	500
11131	47.5	50.3	49.0	45.2	54.0	25.0	500
10820	48.0	52.7	50.7	46.3	57.1	25.4	500
10086	48.6	51.2	48.9	46.7	55.5	18.7	500
12746	49.8	54.0	52.0	47.5	58.0	24.3	500
10624	51.1	54.4	52.0	47.7	57.0	25.0	500
10935	51.5	54.1	52.0	49.6	58.3	18.5	500
11047	53.5	57.0	55.3	51.2	62.4	25.1	400
12431	54.0	58.4	55.0	50.8	62.4	24.5	400
10616	55.0	61.0	59.0	52.2	65.0	25.0	400
11168	55.4	58.8	57.2	53.7	65.0	25.1	400
11169	57.5	57.6	56.1	55.2	63.6	12.8	700
11100	59.3	67.3	64.1	56.7	70.3	31.7	300
10249	59.6	62.6	61.0	57.0	66.7	24.6	300
11075	62.0	66.4	64.3	59.0	71.0	28.0	300
10292	63.3	69.8	67.8	61.5	73.0	25.4	400
10399	64.5	67.3	65.6	62.1	70.6	15.8	400
11064	68.1	70.9	69.3	66.3	74.6	19.0	400
10302	70.0	75.8	74.0	68.1	79.4	25.4	300
10617	74.0	77.0	73.9	71.5	82.5	18.7	300
10550	74.0	76.8	73.4	70.0	80.0	24.4	600
11023	76.8	82.2	80.8	74.8	85.7	25.4	500
11170	77.1	80.7	78.2	74.8	85.7	19.0	300
11037	80.0	86.1	82.0	77.5	89.8	25.1	500
10353	84.2	90.8	88.3	82.7	94.5	28.0	500

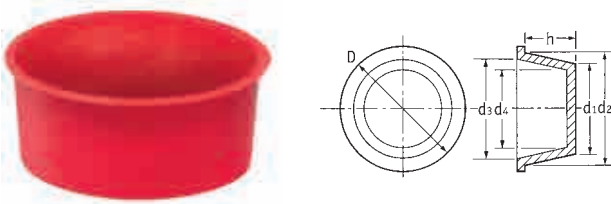
To Fit Thread Size	
As Cap	As Plug
M30	M33, 1" BSP
7/8" BSP	1 5/16" BSP" x 12 UNF
-	1 3/8" UNF, M36
M33, M32, 1 1/4" UNF	M36
1 1/2" BSP	1 1/2" BSP
-	-
1" BSP	M38, 1 1/2" BSP
-	-
1 3/8" UNF	1 3/8" BSP
-	-
-	-
M38	1 1/4" BSP
1 1/2" UNF	-
M39, M40	M42
-	-
1 1/4" BSP	M45 x 2
-	-
-	-
M45 x 1.5/2/3	M48 x 2, 1 7/8" JIC/UNF, 1 1/2" BSP
1 3/8" BSP	M48, 1 1/2" BSP
-	M48
-	-
-	-
-	-
M48, 1 1/2" BSP	M52
-	-
-	-
-	-
1 3/4" BSP	M56, M55
-	-
-	-
M58	2" BSP
-	-
-	-
-	-
-	-
-	-
-	M76, M75, 2 1/2" BSP
-	-
-	-
2 1/2" BSP	-
-	-
3" BSP	-

†Includes six ribs on shank for extra secure fit when used as a plug

TAPERED CAPS/PLUGS

Tapered Caps/Plugs CONTINUED

SR 1000



Order Guide

When used as a cap, the d4 dimension should be at least 0.5mm per centimetre less than the diameter to be capped. Diameters over 30mm may require more interference.

When used as a plug, the d2 dimension should be at least 0.5mm per centimetre larger than the opening. Diameters over 30mm may require more interference.

Part Number	Dimensions						Standard Pack Quantity
	d1	d2	d3	d4	D	h	
11171	85.3	88.0	85.5	82.9	92.0	19.0	250
12572	87.5	93.6	90.5	84.3	96.7	34.3	250
10304	88.1	93.3	89.9	85.1	96.5	28.6	300
10253	92.1	97.0	94.0	88.3	100.0	32.0	300
10697	93.5	100.3	97.8	89.9	107.5	26.5	400
462569	96.5	102.0	101.0	94.0	110.0	31.0	200
12573	94.5	100.6	97.0	91.0	103.6	34.5	100
12199	98.0	102.0	98.5	94.8	107.2	24.7	400
10551	98.2	103.3	99.0	95.0	106.0	28.8	300
110785	101.0	107.0	103.0	98.0	109.0	28.6	300
10688	101.9	107.5	103.0	98.0	109.0	28.6	300
10771	106.7	111.7	107.4	107.4	113.3	28.6	250
10455	108.0	114.1	111.6	106.4	118.5	35.2	250
462570	109.0	113.0	111.0	106.0	123.0	27.0	175
10837	110.0	115.0	109.0	105.0	118.5	28.0	250

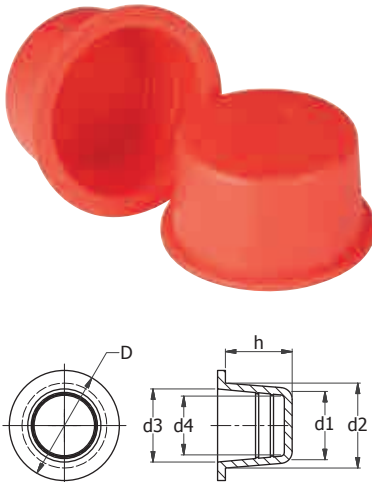
Part Number	Dimensions						Standard Pack Quantity
	d1	d2	d3	d4	D	h	
12574	111.5	117.6	115.0	107.5	122.0	35.0	250
10133	112.1	114.3	109.8	107.5	116.8	28.6	250
10355	124.0	128.0	125.0	121.0	134.0	23.0	150
12575	129.0	135.1	132.0	124.0	139.5	36.5	150
462571	133.0	137.0	134.2	130.2	143.0	22.0	150
12576	139.5	145.6	140.0	135.0	150.0	36.5	150
10356	146.8	151.0	148.6	142.8	159.5	33.0	100
39649	153.7	161.5	160.0	152.0	178.9	29.6	135
12577	156.0	162.3	158.8	151.8	167.3	36.7	100
39196*	202.9	203.8	198.8	198.0	218.7	32.7	100
462572	203.5	208.5	205.9	200.9	216.0	24.0	60
39666	216.0	223.6	223.0	213.0	241.5	29.1	100
39195*	252.2	257.8	247.8	247.2	272.5	33.8	50
39149*	304.2	308.4	299.4	299.2	322.6	33.9	30

* Black LDPE.

Heavy Duty Caps/Plugs

SR 1003

Red/White LDPE



- Heavy-duty design includes a rugged wall and seal ring for maximum protection
- The Tapered design allows the part to plug multiple inner diameters or cap multiple outside diameters

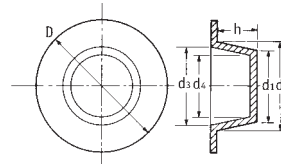
Part Number	Dimensions(mm)						Standard Pack Quantity
	d1	d2	d3	d4	D	h	
GP607A	7.4	8.3	6.3	5.5	13.5	9.5	5000
GP610A	8.1	9.9	7.2	5.4	14.3	11.1	5000
GP617A	11.1	12.7	10.7	8.9	16.4	11.1	4000
GP628A	16.7	19.2	16.8	13.7	23.4	16.5	5700
GP632A	19.5	21.6	18.8	15.5	26.5	15.9	4200
K1838A*	20.8	22.8	20.4	18.0	28.4	16.2	2000
GP642A	27.8	29.0	26.6	23.4	34.5	16.0	2200
GP648A	30.6	34.4	30.5	29.2	38.9	19.1	1500
GP650A	33.1	35.2	32.6	30.6	41.3	19.1	1400
GP652A	35.0	36.6	34.1	31.4	43.0	19.1	1300
GP654A	36.8	38.7	36.0	34.1	44.0	19.1	1200
GP656A	38.3	40.1	37.2	34.2	46.2	19.1	1000
GP658A	39.6	41.6	39.2	36.6	47.6	19.1	1000
GP660A	41.0	42.8	40.6	37.5	48.4	19.1	1000
GP662A	42.7	44.5	41.8	39.2	50.8	19.1	800
GP664A	43.9	46.1	44.0	41.7	54.0	19.1	800
GP666A	45.9	47.7	45.0	42.4	56.8	19.1	700
GP668A	47.4	48.8	46.2	43.5	57.6	19.1	700
GP670A	49.0	51.0	48.0	46.1	59.7	19.1	600
GP672A	50.0	51.7	49.4	46.0	60.9	19.1	600
GP674A	51.8	54.1	52.0	49.4	62.7	19.1	600
GP676A	53.6	55.4	53.6	51.1	63.5	19.1	500

Tapered Caps/Plugs – Large Flange Range

SR 1001

Red LDPE

- Complements SR 1000 caps and plugs
- Large flange for greater protection and easy removal



Part Number	Dimensions						Standard Pack Quantity
	d1	d2	d3	d4	D	h	
12432	7.6	9.3	7.7	6.3	18.4	9.5	10000
12433	10.7	12.3	10.7	9.1	22.0	9.5	10000
10420	11.3	13.2	11.6	9.8	29.0	11.0	5000
110831	11.4	12.4	10.5	9.5	15.0	7.0	2000
12434	13.5	15.5	13.2	11.4	30.0	9.5	5000
18349	13.6	15.4	13.8	12.2	22.2	11.1	8000
18351	14.7	16.9	15.4	13.2	25.4	12.7	6000
12435	17.5	20.0	18.5	16.1	34.9	14.3	3000
18356	19.1	21.5	19.9	17.6	38.1	14.3	2500
12436	21.9	25.0	22.0	18.9	48.0	17.5	1500
12134*	22.5	25.3	23.5	20.8	55.4	17.3	3000
18357	24.7	27.7	26.1	23.2	38.1	19.1	1500
12437	30.4	33.6	30.7	27.8	47.3	15.2	1400
18360	31.1	34.4	32.8	29.8	47.6	19.1	1000
12438	33.3	37.2	35.6	32.0	50.8	22.2	800
12439	36.9	40.6	39.0	35.0	54.2	22.5	800
18362	41.4	44.8	43.0	39.7	57.2	19.0	700
12441	47.2	51.9	48.7	44.5	72.0	24.0	400
18366	48.3	52.7	50.7	46.3	63.5	25.4	1200
18368	51.5	54.1	52.0	49.6	66.7	18.5	500
18373	55.0	61.0	59.0	52.5	76.7	25.0	300
18374	62.0	66.4	64.3	59.0	83.0	28.0	250

*Supplied with vent hole.

To Fit Thread Size	
As Cap	As Plug
-	-
1/8" BSP	1/4" BSP, 1/2" UNF
-	-
-	-
-	-
1/4" BSP, 1/2" UNF	M16, 5/8" UNF
-	M18
M18	1/2" BSP
-	-
-	-
-	-
-	M27, M30
M30	M33, M32, 1" BSP
M33, M32, 1 1/4" UNF	M35
M35, 1" BSP	M36, M38, 1 1/8" BSP, 1 1/2" UNF
M38, 1 1/8" BSP	M39, M40, 1 1/4" BSP
M42, 1 1/4" BSP	M45
-	-
M48, 1 3/4" BSP	M52
-	-
-	-
-	-
-	-

Tapered Caps/Plugs – Large Flange Range

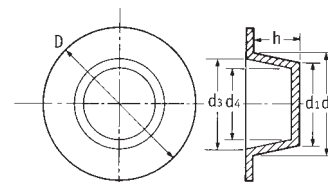
SR 1115

Blue LDPE

- Large flange for greater protection and easy removal



Part Number	Dimensions(mm)						Standard Pack Quantity
	d1	d2	d3	d4	D	h	
LF2A	4.4	6.1	4.5	2.8	14.3	11.8	5500
LF-3	6.0	7.4	6.2	3.7	12.3	10.2	5000
LF-6	9.3	10.6	9.0	7.6	18.8	10.2	5000
LF8A	10.8	12.1	10.7	9.0	20.62	10.2	4750
LF9A	11.2	12.9	11.4	9.5	20.83	11.8	7500
LF-10	12.2	13.9	12.5	10.4	22.1	11.7	7000
LF11A	13.5	15.6	14.5	11.9	23.88	11.9	5000
LF-11X	14.4	16.0	14.7	12.7	24.1	12.5	5000
LF12A	14.7	16.7	15.4	13.2	24.97	13.4	4500
LF-12X	15.5	17.5	16.1	13.9	26.2	13.4	4500
LF15A	17.5	19.7	18.3	15.7	28.58	14.2	3500
LF-15X	18.4	20.6	19.4	16.8	29.0	15.0	3000
LF16A	19.2	22.1	20.5	17.6	30.1	14.7	3000
LF-17	20.8	23.4	22.0	18.8	31.8	15.8	2300
LF18A	22.0	24.8	23.2	20.4	32.54	16.5	4000
LF-19	24.1	25.9	24.3	22.2	34.1	18.2	1500
LF20A	25.0	28.1	26.4	23.4	36.5	18.9	3000
LF22A	31.4	35.1	33.3	29.6	42.85	18.9	2000
LF23XA	33.3	37.2	36.2	31.8	46.86	19.7	1700
LF24A	36.8	40.7	39.4	35.1	49.23	18.9	1500
LF-28	43.9	48.0	46.4	41.9	58.7	18.9	1100

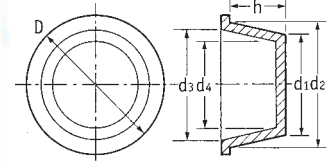


Tapered Caps/Plugs-Blue Series

SR 1111

Blue LDPE

- Use as cap or plug
- Easy fitting and removal
- Provide excellent protection from damage, dirt, moisture and corrosion during storage and transportation

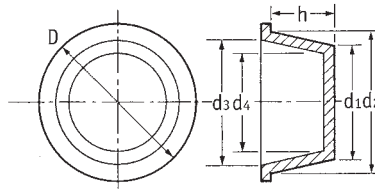


Part Number	Dimensions(mm)						Standard Pack Quantity
	d1	d2	d3	d4	D	h	
1	2.9	4.6	3.0	1.3	7.9	10.3	5000
1S	3.5	4.6	3.0	1.3	7.9	6.4	5000
2	4.5	6.1	4.5	2.8	9.5	9.5	5000
3	5.3	6.8	4.9	3.2	9.5	9.5	5000
5	6.1	7.7	6.1	4.5	11.9	9.5	5000
6	6.7	8.5	7.0	5.2	11.9	9.5	5000
7	7.6	9.3	7.7	5.9	13.5	9.5	5000
7-S	8.4	9.3	7.7	6.8	12.7	5.6	5000
8	8.4	10.1	8.4	7.0	14.3	9.5	5000
9	9.1	10.9	9.3	7.6	15.1	9.5	5000
10	9.9	11.7	10.1	8.3	15.9	9.5	5000
11	10.7	12.3	10.7	9.0	15.1	9.5	5000
12	11.4	13.0	11.4	9.8	15.9	10.3	5000
13	12.5	13.9	12.3	10.4	18.3	12.7	5000
13-SP	12.1	13.8	12.2	10.4	18.3	7.9	5000
13-W	12.1	13.9	12.3	10.4	22.2	12.7	7000
14	12.7	14.4	12.8	11.1	19.1	11.1	5000
16	13.5	15.8	14.1	11.9	19.1	11.8	7500
17	14.0	16.1	14.4	12.3	19.8	12.7	7500
18	15.0	17.2	15.4	13.2	22.2	13.5	5000
20	15.5	17.7	16.1	13.9	21.4	12.7	6000
21	16.3	18.5	16.9	14.6	22.2	12.7	5000
22	17.2	19.2	17.5	15.6	22.2	15.9	4000
23	17.5	19.9	18.4	15.9	23.8	15.9	4000
26	18.4	21.0	19.3	16.8	25.4	12.7	4000
26-L	18.4	21.0	19.3	16.8	24.6	15.0	8000
27	19.1	21.5	19.7	17.4	26.2	15.9	7000
28	20.4	23.1	21.5	18.4	27.8	19.1	5000
29	20.8	23.7	21.6	19.2	28.6	14.6	5500
30	21.7	24.7	23.0	19.5	28.6	19.1	4500
31	22.1	24.8	23.4	20.4	28.6	15.9	5000
35	22.7	26.4	24.8	21.1	29.4	19.1	4500
38	24.9	26.5	25.0	22.3	31.8	12.7	2500
40	24.5	27.7	26.0	22.9	31.8	19.1	3500
41	25.5	29.1	27.4	23.8	33.3	19.1	3500
42	28.2	31.2	30.0	26.4	38.5	19.1	2500
44	30.0	32.6	30.9	28.1	36.5	19.1	2500
45	31.1	34.3	32.9	29.5	38.1	19.1	2500
46	31.4	34.3	32.9	29.0	36.5	19.1	2500
47	32.8	34.6	33.02	31.2	38.1	19.1	2000
48	32.8	37.0	35.3	31.2	41.3	25.4	1500
49	33.3	37.3	35.6	31.7	41.3	19.1	2000
51	34.1	38.5	36.8	32.6	44.5	23.8	1500
53	36.8	40.6	39.0	35.2	44.5	19.1	2000
54	38.6	40.7	39.0	37.0	45.2	19.1	1700
K-5	38.7	38.7	37.7	36.7	44.5	12.7	2500
55	39.6	42.5	41.2	38.0	47.6	19.1	1500
56	40.8	44.5	42.8	39.8	49.2	19.1	1500
57	44.1	47.5	46.2	42.6	51.6	19.1	1200
58	45.9	49.7	48.1	44.3	54.0	25.4	900
59	45.7	46.4	44.7	44.1	51.6	12.7	2000
60	46.9	51.3	49.2	45.3	54.0	25.4	1000
62	48.3	53.0	51.2	46.7	57.2	25.4	850
63	50.3	55.1	53.6	48.6	57.2	25.4	800

CONTINUED ON NEXT PAGE

Tapered Caps/Plugs-Blue Series *CONTINUED*

SR 1111
Blue LDPE



Part Number	Dimensions(mm)						Standard Pack Quantity
	d1	d2	d3	d4	D	h	
65	51.2	54.5	52.9	49.7	58.7	19.1	1000
66	52.4	57.2	55.3	50.8	61.9	26.2	700
67	54.8	59.8	58.1	52.9	66.7	25.4	600
68	56.5	57.9	56.4	54.6	63.5	12.7	1200
70	54.1	61.6	60.2	51.9	63.5	25.4	700
71	58.4	63.1	61.0	56.8	66.7	25.4	600
73	60.8	66.2	64.5	59.2	66.7	25.4	600
74	61.7	67.2	65.5	60.0	69.9	19.1	700
75	58.7	67.3	65.7	57.0	69.9	25.4	750
76	62.4	69.9	68.2	60.8	73.0	25.4	600
77	65.0	68.3	66.7	63.5	73.0	19.1	700
78	67.2	71.3	69.2	65.5	76.2	12.7	1000
81	69.1	76.2	74.9	66.7	79.4	25.4	500
82	72.4	75.7	74.2	70.7	82.6	19.1	500
83	76.1	80.2	78.7	74.0	85.7	12.7	750
85	75.7	82.4	80.4	73.7	85.7	25.4	400
86	78.5	85.5	83.4	76.3	88.9	25.4	400
87	84.3	87.6	85.6	82.3	92.1	12.7	500
88	82.2	90.8	88.8	80.2	100.0	25.4	300
89	88.0	91.4	89.2	86.5	98.4	22.4	350
90	93.4	96.5	94.7	91.6	101.6	19.1	300
91	96.5	99.7	97.7	94.4	104.8	17.5	300
92	99.5	103.4	101.1	96.8	111.1	19.8	250
93	102.4	106.4	104.4	100.3	114.3	19.1	250
94	107.1	112.9	111.3	105.0	123.8	25.4	200
95	110.9	117.0	114.3	109.0	127.0	25.4	200
1100	124.7	129.3	127.3	122.7	139.7	26.2	250
1110	126.8	132.1	129.5	125.0	143.0	26.2	250
101	138.9	142.8	140.7	136.9	155.7	25.4	100
103	143.3	149.2	147.2	140.7	158.8	25.4	100
39665	141.0	150.0	148.0	138.0	164.1	25.4	140
FPL-6*	152.0	153.4	-	-	167.9	32.5	150
104	152.7	157.0	154.9	150.4	168.2	25.4	90
106	162.6	166.6	164.6	160.8	176.3	22.9	100
108	167.9	170.4	168.4	165.9	182.6	38.9	100
K-436	174.8	178.6	176.5	172.7	194.8	13.5	300
110	179.1	180.9	178.8	177.0	193.8	26.2	100
112	186.4	194.3	192.0	184.4	201.7	26.2	100
114	194.6	199.1	197.1	192.5	206.3	26.2	100
118	207.2	212.1	209.6	204.5	222.3	35.7	50
120	213.4	218.4	215.9	210.8	228.6	35.7	50
124	220.2	221.7	219.1	217.2	231.9	38.9	50
126	230.1	237.7	234.7	225.8	250.4	45.2	50
130	274.1	281.9	277.1	268.0	294.6	45.2	40
133	303.0	319.0	313.7	297.2	331.5	51.6	30
134	324.9	338.8	328	318.3	346.5	51.6	30
136	336.6	345.4	340.4	330.2	358.1	51.6	30

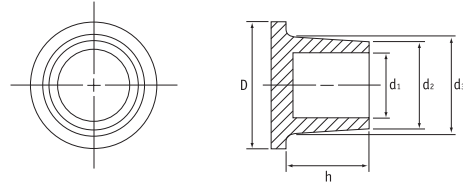
*Black

Covered Tapered Plugs

SR 1114

Blue LDPE

- Designed for use with BSP/NPT tapered threaded fittings



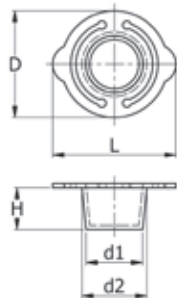
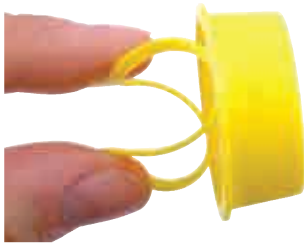
Part Number	BSP/NPT Thread	Dimensions (mm)					Standard Pack Quantity
		d1	d2	d3	D	h	
EN-¼	¼"	9.0	10.7	12.3	15.5	7.1	5000
EN-⅜	⅜"	12.7	14.0	16.3	19.5	12.7	6500
EN-½	½"	15.9	17.5	19.9	23.0	12.7	4000
EN-¾	¾"	20.6	22.1	24.8	27.8	15.9	2500
EN-1	1"	26.2	27.7	30.5	34.1	16.7	1500

Tapered Plug with Ring Tab

SR 1174

Yellow LDPE

- Can be used either as a plug or a cap
- Tapered profile for extended dimensions
- Easy removal of the part with strong ring tab



Part Number	Dimensions (mm)					Standard Pack Quantity
	d1	d2	H	D	L	
498716	5.0	7.0	9.5	17.3	20.3	1000
498717	6.0	8.0	9.5	18.2	21.1	1000
498718	7.0	9.5	9.5	20.3	23.3	1000
498719	8.0	10.0	9.5	20.3	23.2	1000
498720	9.5	11.5	9.5	21.9	24.8	1000
498721	10.5	12.5	9.5	22.6	26.5	1000
498722	11.5	13.5	9.5	23.7	27.5	1000
498723	12.5	14.5	10.0	24.5	28.4	1000
498724	13.5	15.5	10.0	25.5	29.5	1000
498725	14.2	16.2	10.0	26.3	30.3	1000
498726	14.5	17.0	10.0	27.0	31.0	500
498727	15.5	18.0	10.0	28.3	32.0	500
498728	17.5	19.5	10.0	30.0	34.0	500
498729	18.0	20.0	10.0	30.0	34.0	500
498730	19.0	21.5	11.0	32.0	35.7	500
498731	21.0	24.2	11.0	34.7	38.7	500
498732	22.5	25.5	12.0	36.0	40.0	500
498733	25.0	28.0	12.0	38.5	42.2	500
498734	29.0	31.5	12.0	41.8	47.0	500
498735	29.5	32.0	12.0	42.5	47.6	500

OUR LARGE RANGE OF
CAPS AND PLUGS...

...also available in
small pack quantities!

www.essentracomponents.co.uk

Blanking Plugs

SR F-0006

EBA

- Protection plugs for covering holes in metal sheets
- Suitable in application where body plugs are required to protect against sharp edges
- Temperature: Min -30°C, Max +50°C



6353000



6351000/6352000/6354000



6355000

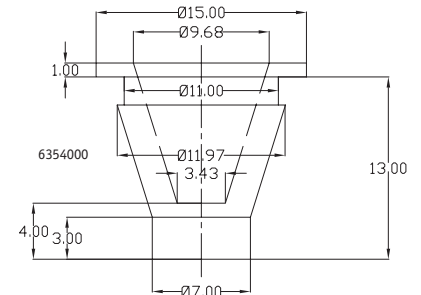
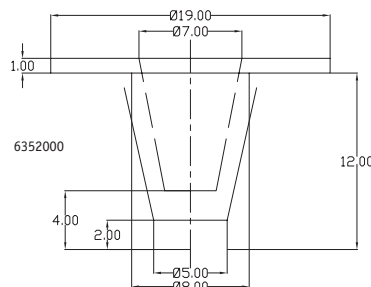
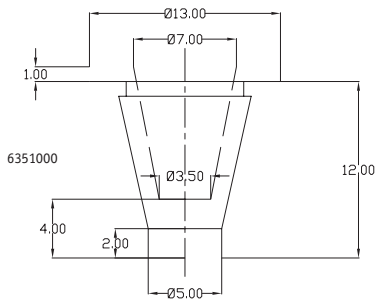


6356000

Part Number	Standard Pack Quantity
6351000	1000

Part Number	Standard Pack Quantity
6352000	1000

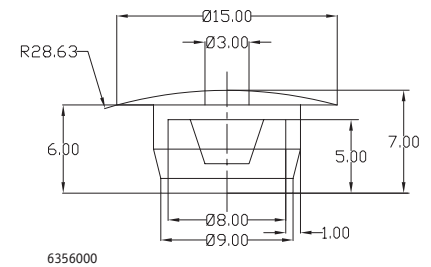
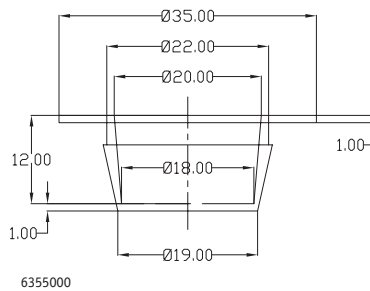
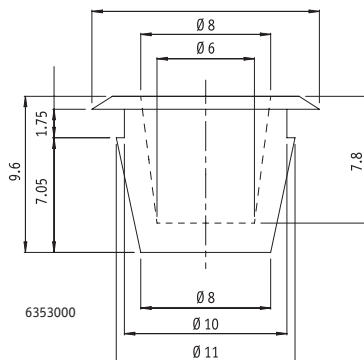
Part Number	Standard Pack Quantity
6354000	1000



Part Number	Standard Pack Quantity
6353000	1000

Part Number	Standard Pack Quantity
6355000	1000

Part Number	Standard Pack Quantity
6356000	1000



CAPS AND PLUGS APPLICATION GUIDE

Many products that you manufacture are likely shipped to another location or customer, or simply moved along an assembly line as part of your production process. During these transits and end uses, it's important to protect vital parts to ensure efficient processes, safe use and reduced downtime.

EQUIPMENT MANUFACTURING



Ensure smooth assembly and transit to your customers by protecting critical internal and external profiles from damage, maintaining quality and a timely delivery.

Key equipment to protect includes enclosures, indoor and outdoor cabinets, HVAC units and generators.

Essentra recommends protecting with:



BLANKING PLUGS



SILICONE CAPS

METAL FABRICATION



Guarantee a professional finish every time by masking holes, studs and contact points during painting, blasting, and finishing processes. By protecting important areas of fabricated metal with easy-to-fit caps and plugs, you can successfully

increase customer satisfaction and minimise recall of finished products.

Key areas to guard include electrical contact points, threaded holes or studs and welding areas.

Essentra recommends protecting with:



MASKING WASHER PLUGS



PULL TAB FLEXI CAP

HOSES & HYDRAULICS



Safe operation of devices using hydraulic fluid calls for specialist hose-fitting protection and coverage. The right cap or plug can help mitigate fluid spills and maintain hose integrity when looking to ensure constant machinery uptime and user safety.

Key hydraulic parts that need safeguarding include grease nipples, DKO-compression fittings, fuel lines and banjo unions.

Essentra recommends protecting with:



HEXAGONAL CAPS



BANJO UNION CAPS

VEHICLES



In applications where precision is everything, it's essential to guard fuel lines from potential debris contamination and protect vital threads from damage during shipment and masking.

Key vehicle parts to protect are diesel/petrol pumps, engines, specialist vehicle fittings, powertrains and brake systems.

Essentra recommends protecting with:



SEALING SLOTTEx CAPS



TAPERED CAPS

For more advice please call us on **0845 758 5070**
or email sales@essentracomponents.co.uk

Centre Pull Plugs

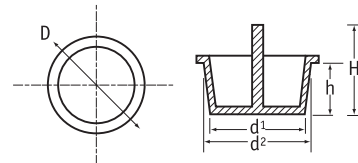
SR 1068

Red LDPE

- Centre pull-tab for easy fit and removal
- Excellent protection from damage, dirt, moisture and corrosion during production, storage and transportation

Part Number	To Fit Thread Size			Dimensions (mm)					Standard Pack Quantity
	Metric	UNF	BSP	d1	d2	D	h	H	
110029	M8	7/16"	-	6.2	7.7	11.1	9.5	20.5	10000
CP-6*	-	-	-	6.8	8.5	11.9	10.3	15.9	5000
110030	M10	7/16"	1/8"	8.4	10.0	13.5	9.5	20.5	10000
110031	-	3/8"	-	9.5	10.8	14.0	9.5	20.5	10000
CP-9*	-	-	-	9.2	10.9	15.1	9.5	19.1	7000
CP-10*	-	-	-	10.2	11.8	15.9	9.5	19.1	6000
110032	M12	1/2"	1/4"	10.9	12.3	15.9	9.5	20.3	10000
CP-12*	-	-	-	11.4	13.0	16.7	10.3	14.3	5000
110033	M14	7/16"	-	11.7	13.7	17.2	11.0	22.0	5000
CP-14*	-	-	-	12.7	14.4	18.3	11.9	20.6	7500
110034	M16	5/8"	3/8"	14.2	16.0	19.0	11.9	22.9	5000
CP-18*	-	-	-	14.7	17.0	20.6	13.5	19.1	5500
CP-19*	-	-	-	15.5	17.7	21.3	13.5	19.8	5000
110035	M20	3/4"	-	16.4	18.3	22.2	12.3	23.5	5000
110036	-	1 1/16"	1/2"	17.8	20.0	23.8	13.7	24.5	5000
CP-24*	-*	-	-	18.5	21.0	25.4	15.0	21.3	5000
110037	M24	7/8"	5/8"	21.3	23.2	27.0	15.9	26.9	3000
CP-31*	-	-	-	22.1	24.7	28.5	19.1	25.4	4000
10418	-	1"	-	22.5	25.5	28.9	17.8	29.0	2500
110038	M28, M30	1 1/8"	-	24.7	27.7	32.0	19.0	30.0	2000
CP-37*	-	-	-	24.6	27.7	31.8	19.8	26.2	2500
CP-40*	-	-	-	26.1	29.1	34.0	19.1	25.4	2500
CP-42*	-	-	-	27.8	31.0	35.8	19.8	25.4	2500
CP-44*	-	-	-	29.2	32.7	39.4	19.1	25.4	2000
CP-47*	-	-	-	32.8	33.2	38.1	19.8	25.4	1800
CP-49*	-	-	-	33.3	37.2	41.2	19.1	25.4	1800
CP-51*	-	-	-	34.1	38.8	44.5	22.4	25.4	1500
CP-55*	-	-	-	36.9	40.7	44.5	19.1	25.4	1500
CP-56*	-	-	-	41.0	44.1	48.4	18.3	28.6	1000
CP-57*	-	-	-	45.9	49.2	54.9	25.4	31.8	1000
110039†	M52	-	-	48.2	52.7	57.1	25.4	26.4	300
110040†	M58, M60	-	2"	55.0	61.0	65.0	25.0	26.0	400
110041†	M62	-	-	59.3	67.3	70.6	30.7	31.5	150
110042†	-	-	-	67.4	70.2	74.6	25.0	26.0	300

† Pull-tab does not extend above overall height.
* Orange LDPE



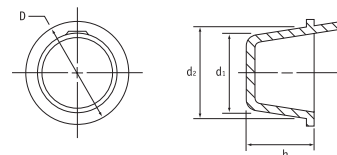
Side Pull Tabs

SR 1110

Blue LDPE

- Use as Cap or Plug
- Side pull-tab for easy removal

Part Number	Dimensions (mm)				Standard Pack Quantity
	d1	d2	D	h	
P-7	7.6	9.3	13.5	9.5	5000
P-8	8.4	10.1	14.3	9.5	5000
P-11	10.7	12.3	15.1	9.5	5000
P-16	13.5	15.8	19.1	12.7	7000
P-17	14.0	16.1	19.8	12.7	7000
P-23	17.5	19.9	23.8	15.9	3500
P-26	20.4	23.2	26.9	16.5	5000
P-31	22.1	24.8	28.6	15.9	2500
P-33	23.2	26.4	29.4	18.3	5000
P-40	24.5	27.7	31.8	19.8	3000
P-41	25.3	29.1	33.3	19.8	2500
P-42	28.2	31.2	38.5	19.1	2500
P-44	29.6	32.4	35.7	19.1	2500
P-53	36.8	40.6	44.5	19.1	2000
P-55	39.6	40.6	47.6	19.1	1500
P-57	41.5	44.5	49.3	19.1	1000
P-59	45.7	46.4	51.6	12.7	2000
P-61	45.2	49.5	53.9	25.4	1000
P-63	46.8	50.8	53.9	25.4	1000
P-65	48.2	52.7	57.2	25.4	1000
P-68	56.7	57.4	63.5	12.7	1000



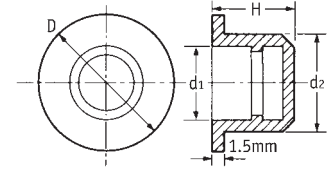
PUSH FIT PLUGS

Moss Plugs

SR 1013

Black PVC or Green Vinyl

- Highly resistant to shredding
- Green vinyl can be used with oils and greases



Part Number		Dimensions (mm)				Standard Pack Quantity
Black PVC	Green Vinyl	d1	d2	D	h	
10874	-	1.6	3.2	7.0	8.7	10000
12665	-	3.2	5.0	11.0	12.0	10000
12666	11806	3.1	6.0	12.0	12.0	5000
12667	11817	4.5	7.0	13.0	12.0	5000
12668	11808	4.9	8.0	14.0	12.0	10000
12669	11829	6.1	9.0	15.0	12.0	5000
12670	11807	7.2	10.0	16.0	12.0	5000
12671	11824	8.2	11.0	17.0	12.0	10000
12672	11809	9.2	12.0	20.0	12.0	8000
12673	11822	10.2	13.0	21.0	14.0	8000
12674	11813	11.0	14.0	22.0	14.0	7000
12675	11830	12.2	15.0	23.0	14.0	6000
12677	11820	12.9	16.0	24.0	14.0	6000
12678	11811	14.0	17.0	27.0	14.0	5000

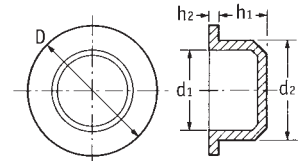
Part Number		Dimensions (mm)				Standard Pack Quantity
Black PVC	Green Vinyl	d1	d2	D	h	
12679	11827	15.0	18.0	28.0	14.0	4000
12680	11818	16.1	19.0	29.0	14.0	2000
12681	11812	17.2	20.0	30.0	14.0	2000
12683	11823	18.0	21.0	31.0	14.0	3000
12684	11828	19.0	22.0	32.0	14.0	1500
12685	11814	20.1	23.0	33.0	14.0	1500
12686	11810	21.6	24.0	34.0	16.0	2500
12687	11816	22.2	25.0	35.0	16.0	2000
12688	11819	23.5	26.0	36.0	16.0	2000
12689	11821	23.6	27.0	37.0	16.0	2000
12690	11825	25.2	28.0	38.0	16.0	2000
12692	11826	27.9	30.0	40.0	16.0	1000
12693	12078	36.4	40.0	50.0	22.0	700
12694	-	43.2	47.0	57.0	22.0	500

Parallel Protection Plugs CONTINUED

SR 1015

Natural LDPE

- Popular general-purpose plug



Part Number	Dimensions (mm)					Standard Pack Quantity
	d1	d2	D	h1	h2	
1453620	-	2.0	6.3	3.2	-	5000
1451040	-	2.5	6.3	3.7	-	5000
1451041	-	3.0	6.3	4.6	-	5000
1450188	-	3.5	6.9	4.6	-	5000
1450189	-	4.0	7.4	5.0	-	5000
1441574	-	4.5	8.0	5.0	-	5000
12150	3.5	5.0	9.0	5.0	1.0	10000
12151	3.6	5.5	9.5	5.0	1.0	10000
12152	4.5	6.0	10.0	5.5	1.0	10000
12153	5.0	6.5	10.5	5.5	1.0	10000
12154	5.5	7.0	11.0	5.5	1.0	10000
12155	5.6	7.5	11.5	5.5	1.0	10000
12156	6.5	8.0	12.0	5.5	1.0	10000
12157	7.0	8.5	12.5	6.0	1.0	10000
12158	7.5	9.0	13.0	6.0	1.0	10000
12159	8.0	9.5	13.5	6.0	1.0	10000
12160	8.5	10.0	14.0	6.5	1.0	10000
12161	9.0	10.5	14.5	6.5	1.0	10000
12162	9.5	11.0	15.0	6.5	1.0	10000
12163	10.0	11.5	15.5	6.5	1.0	10000
12164	10.5	12.0	15.8	6.5	1.0	5000
12165	11.0	12.5	16.5	6.5	1.0	5000
12166	11.0	13.0	17.0	6.5	1.25	5000
12167	11.5	13.5	17.5	6.5	1.25	5000
12168	12.0	14.0	18.0	6.5	1.25	5000
12169	12.5	14.5	18.5	7.0	1.25	5000
12170	13.0	15.0	19.0	7.5	1.25	5000
12171	13.5	15.5	19.5	7.5	1.25	5000
12172	14.0	16.0	20.0	7.5	1.25	5000
12173	14.5	16.5	20.5	7.5	1.25	5000
12174	15.0	17.0	21.0	7.5	1.25	5000
12175	15.5	17.5	21.5	7.5	1.25	5000
12176	16.0	18.0	22.0	8.5	1.25	5000

Part Number	Dimensions (mm)					Standard Pack Quantity
	d1	d2	D	h1	h2	
12177	16.5	18.5	22.5	8.5	1.25	5000
12178	17.0	19.0	23.0	8.5	1.25	5000
12179	17.5	19.5	23.4	8.5	1.25	5000
12180	18.0	20.0	24.0	9.0	1.25	5000
12181	18.5	20.5	24.5	9.0	1.25	5000
12182	19.0	21.0	25.0	9.0	1.25	5000
12183	19.5	21.5	25.5	9.0	1.25	5000
12184	22.0	22.0	26.0	9.0	1.25	5000
12185	20.0	22.5	26.5	9.0	1.5	2500
12186	20.5	23.0	27.0	9.0	1.5	2500
12187	21.0	23.5	27.5	9.0	1.5	1250
12188	21.5	24.0	28.0	9.0	1.5	2500
12189	22.0	24.5	28.5	9.0	1.5	2500
12190	22.5	25.0	29.0	9.0	1.5	2500
1450190	-	25.5	28.8	10.4	-	5000
12191	23.5	26.0	30.0	10.0	1.5	2000
465656	24.7	26.6	30.6	8.5	1.4	1000
12192	24.5	27.0	31.0	10.0	1.5	2000
465657	26.0	27.7	31.6	8.5	1.3	1000
12193	25.5	28.0	32.0	10.0	1.5	2000
1450191	-	28.5	32.0	10.0	-	10000
12194	26.5	29.0	33.0	10.0	1.5	1500
1450192	-	29.5	33.3	10.3	-	9000
12195	27.5	30.0	34.0	10.0	1.5	1500
1450193	-	30.5	33.8	10.3	-	8000
465658	29.9	31.1	35.0	8.5	1.3	1000
465659	30.2	31.4	35.5	8.5	1.4	1000
10352	29.0	31.5	35.5	10.0	1.5	1500
465660	30.2	31.8	35.8	8.5	1.4	1000
1451042	-	32.0	36.6	10.3	-	7500
462590	30.5	32.5	37.0	11.0	1.0	1500
1441575	-	33.0	37.1	10.0	-	7000
465661	31.7	33.2	37.2	8.5	1.4	1000

Part Number	Dimensions (mm)					Standard Pack Quantity
	d1	d2	D	h1	h2	
1451043	-	33.5	36.7	10.5	-	6000
1451044	-	34.0	38.5	10.5	-	6000
1451045	-	34.5	37.6	10.2	-	6000
1450194	-	35.0	39.3	10.5	-	6000
1451046	-	35.5	38.8	10.3	-	5500
465662	34.4	36.0	40.2	8.5	1.4	1000
1450195	-	36.5	40.2	10.5	-	5000
1450196	-	37.0	41.5	10.3	-	5000
1450197	-	37.5	41.0	10.6	-	5000
1450198	-	38.0	43.0	10.3	-	5000
1451047	-	38.5	42.5	10.5	-	5000
465663	37.5	39.1	43.1	8.5	1.4	1000
465664	38.0	39.5	46.2	8.8	1.4	1000
462591	37.5	39.5	42.0	11.0	1.0	1000
465665	38.9	40.1	46.8	8.6	0.7	1000
465666	39.1	40.7	47.5	8.7	1.5	1000
465670*	38.3	40.5	54.0	9.6	1.3	750
1441576	-	41.0	45.2	10.0	-	5000
1451048	-	42.0	47.0	10.3	-	4500
465667	41.4	42.6	46.4	5.8	1.5	1000
1453621	-	43.0	47.3	10.5	-	4500
1450199	-	43.9	48.9	10.1	-	4000
1450200	-	44.9	50.2	10.5	-	4000
1441568	-	46.0	50.8	10.0	-	4000
465668	44.5	46.1	52.7	8.5	1.4	1000
462592	45.5	47.0	52.0	10.0	1.0	1000
1453622	-	48.0	52.8	10.1	-	3500
1450201	-	48.5	52.3	10.8	-	3500
1450202	-	49.0	53.9	10.4	-	3500
1453623	-	49.8	53.9	9.4	-	3500
465672	49.5	51.1	60.0	10.2	1.1	750
1450203	-	52.0	58.1	10.9	-	3000
1450204	-	53.0	58.6	11.0	-	3000
1450205	-	53.5	56.3	9.3	-	3000
1451049	-	54.0	60.2	10.6	-	2500
1450206	-	55.0	61.6	10.8	-	2500
1451050	-	56.0	62.7	11.7	-	2000
1451051	-	57.0	60.2	9.8	-	2500
465673	56.5	58.2	67.0	8.7	1.1	750
1450207	-	59.0	65.4	10.9	-	2000
465674	58.8	60.0	61.7	10.2	0.7	750
1441577	-	60.8	67.5	11.0	-	2000
1450208	-	62.0	68.5	10.8	-	2000
1451052	-	62.7	67.0	9.5	-	2000

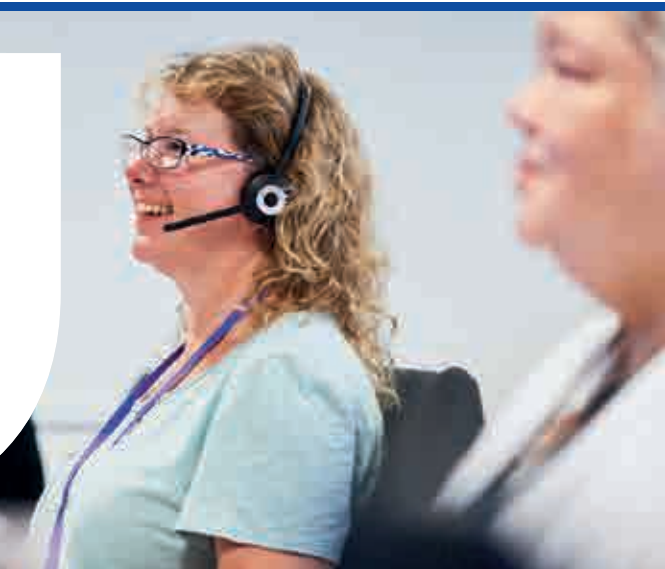
Part Number	Dimensions (mm)					Standard Pack Quantity
	d1	d2	D	h1	h2	
1451053	-	63.5	70.2	10.4	-	2000
1441578	-	63.5	66.5	9.5	-	2000
1441579	-	65.0	69.0	10.0	-	2000
1441569	-	66.0	70.5	10.5	-	2000
465675	64.6	66.2	75.2	8.7	1.1	750
1450209	-	67.0	73.0	10.2	-	2000
1450210	-	68.2	74.5	10.7	-	1800
1450211	-	69.0	74.4	10.4	-	1800
1450212	-	70.0	73.1	10.8	-	1800
1441570	-	70.9	74.5	10.8	-	1700
1450213	-	71.5	74.9	10.3	-	1700
1450214	-	72.0	78.7	11.5	-	1500
1450215	-	72.5	75.8	9.7	-	1500
465676	72.0	74.0	83.0	8.7	1.2	750
1441571	-	75.0	81.8	10.0	-	1500
1441572	-	75.5	80.5	11.5	-	1500
1451054	-	76.8	80.5	9.5	-	1500
1450216	-	78.0	81.5	10.6	-	1500
1450217	-	78.5	81.6	9.8	-	1500
1450218	-	79.5	83.0	9.8	-	1500
1441573	-	80.5	85.5	10.0	-	1500
465677	79.4	81.2	90.2	8.7	1.2	500
1450219	-	81.5	86.0	9.6	-	1500
1451055	-	82.5	86.0	9.7	-	1500
1451056	-	84.0	89.9	10.6	-	1300
1450220	-	84.5	89.7	7.7	-	1300
465678	83.2	85.1	93.8	8.7	1.4	500
1451057	-	85.5	88.9	9.5	-	1300
1451058	-	86.0	89.9	9.5	-	1300
465679	84.4	86.6	98.6	9.0	1.3	500
1451059	-	87.5	91.4	9.5	-	1300
1451060	-	88.5	92.9	9.5	-	1250
1451061	-	90.0	93.6	10.0	-	1300
1451062	-	90.5	94.5	9.5	-	1200
1450221	-	91.5	95	9.6	-	1200
1451063	-	92.5	96.3	9.5	-	1200
1451064	-	93.5	97.0	9.6	-	1200
1453624	-	94.5	98.5	9.5	-	1000
1453625	-	95.8	99.5	9.7	-	1000
1451065	-	96.5	100.0	9.5	-	1000
1451066	-	97.5	101.6	10.0	-	1000
1451067	-	98.5	101.8	9.6	-	1000
1451068	-	99.5	103.7	10.4	-	1000
465680	99.5	101.8	113.8	9.0	1.4	500

*Style variation with flange

QUESTIONS? GIVE US A CALL

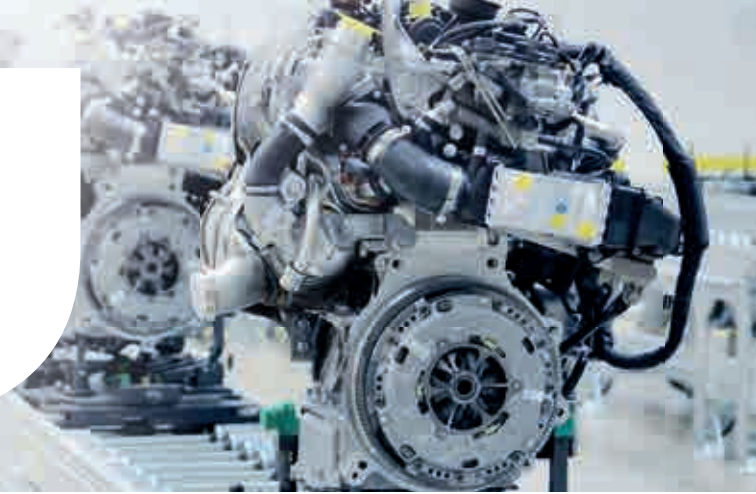
Our Customer Service advisors can also help you find the right product for your application.

Call 0845 758 5070
www.essentracomponents.co.uk



KEEP IT SAFE WITH OUR PROTECTION SOLUTIONS

Tell us what you're protecting:



GENERAL PROTECTION

Keep out dirt, dust and grime during production, transportation and storage to maintain the quality of your application.



TAPERED CAPS/PLUGS

Page 12



CENTRE PULL PLUGS

Page 21



BARREL PLUGS

Page 25



EZEPLUGS

Page 30



FLEXICAPS

Page 50

SPECIALIST PROTECTION

Leaks and residue from hydraulics can wreak havoc, so rely on our range of specialist, fluid protection solutions.



**O-RING
THREADED PLUGS**

Page 54



**FLUID
ABSORPTION PLUG**

Page 60



**BANJO
UNION CAPS**

Page 88



**HEXAGONAL
CAPS**

Page 87



**SIDE RELEASE
PLUGS**

Page 89

MASKING

When it comes to achieving optimum results during surface treatment, our range of masking solutions have you covered, for holes and ingresses as well as the surface itself.



**HIGH-TEMPERATURE
PLUGS**

Page 107



**HIGH-TEMPERATURE
FLANGELESS PLUGS**

Page 109



**DIE CUT
(CUSTOM MASKING)**

Page 116



**PULL-TAB
FLEXICAPS**

Page 117



**MOSS
CAPS**

Page 122

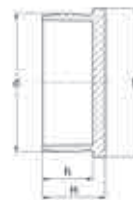
Call 0845 758 5070 • www.essentracomponents.co.uk

Barrel Plugs

SR 1011

Natural/White/Black LDPE

- General-purpose plug for a wide range of applications
- Quick to fit and remove
- Convex sides to ensure secure fit



Type 1
Straight Top



Type 2
Straight Walls



Type 3
Curved Walls

Part Number	Colour	Type	To Fit Thread Size	Dimensions (mm)				Standard Pack Quantity
				d	D	h	H	
055002200003	Natural	2	-	2.1	3.5	7.0	-	1000
055002500003	Natural	2	-	2.6	12.0	4.0	-	1000
055002600003	Natural	2	-	2.7	12.0	6.0	-	1000
055003200003	Natural	2	-	3.3	12.0	6.0	7.7	1000
055004400003	Natural	2	-	4.4	9.0	5.2	6.5	1000
054044911303	White	2	-	4.4	9.0	5.2	6.5	1000
054044922003	Black	2	-	4.4	9.0	5.0	6.5	1000
055004700003	Natural	2	-	4.6	7.0	5.0	6.2	1000
054047760003	White	2	-	4.6	7.0	5.0	6.2	1000
054047769903	Black	2	-	4.6	7.0	5.0	6.2	1000
055005200003	Natural	2	-	5.1	11.0	6.0	8.0	1000
055005211303	White	2	-	5.1	11.0	6.0	8.0	1000
055005222003	Black	2	-	5.1	11.0	6.0	8.0	1000
10876	Natural	2	-	5.4	12.0	7.5	9.5	10000
054054211303	White	2	-	5.4	12.0	7.5	7.5	1000
494365	Black	2	-	5.4	12.0	7.5	9.5	500
054054560003	White	2	-	5.4	15.0	7.5	-	1000
054054569903	Black	2	-	5.4	15.0	7.5	-	1000
055006000003	Natural	2	-	6.0	11.0	7.0	-	1000
054060111303	White	2	-	6.0	11.0	7.0	-	1000
054060122003	Black	2	-	6.0	11.0	7.0	-	1000
054060260003	White	2	-	6.0	12.0	7.0	-	1000
054060269903	Black	2	-	6.0	12.0	7.0	-	1000
054060560003	White	2	-	6.0	15.0	7.0	-	1000
054060569903	Black	2	-	6.0	15.0	7.0	-	1000
1287228	Natural	1	-	6.3	9.6	4.0	5.1	1000
055006600003	Natural	2	-	6.6	7.5	5.0	-	1000
055006611303	White	2	-	6.6	7.5	5.0	-	1000
055006622003	Black	2	-	6.6	7.5	5.0	-	1000
055007000003	Natural	2	-	7.2	11.0	6.5	8.4	500
054070111303	White	2	-	7.2	11.0	6.5	-	1000
054070122003	Black	2	-	7.2	11.0	6.5	-	1000
054070260003	White	2	-	7.2	12.0	6.5	-	500
054070269903	Black	2	-	7.2	12.0	6.5	-	500
054070560003	White	2	-	7.2	15.0	6.5	-	500
054070569903	Black	2	-	7.2	15.0	6.5	-	500
055007300003	Natural	2	-	7.3	11.0	6.0	8.0	500
12135	Natural	1	M8 x 1. 5/16" x 24 UNF	7.3	14.0	6.0	8.0	10000
494366	Black	1	M8 x 1. 5/16" x 24 UNF	7.3	14.0	6.0	8.0	500
055007500003	Natural	2	-	7.5	10.7	4.5	6.2	500
055008000003	Natural	2	-	8.0	12.0	7.5	9.5	500
054080260003	White	2	-	8.0	12.0	7.5	-	500
054080269903	Black	2	-	8.0	12.0	7.5	-	500
054080560003	White	2	-	8.0	15.0	7.5	-	500
054080569903	Black	2	-	8.0	15.0	7.5	-	500
12136	Natural	1	-	8.4	14.0	6.0	8.0	10000
494367	Black	1	-	8.4	14.0	6.0	8.0	500
055008400003	Natural	2	-	8.5	12.0	4.0	-	500

CONTINUED ON NEXT PAGE

Barrel Plugs CONTINUED

SR 1011

Natural/White/Black LDPE



Type 1



Type 2



Type 3

Part Number	Colour	Type	To Fit Thread Size	Dimensions (mm)				Standard Pack Quantity
				d	D	h	H	
055008500003	Natural	2	-	8.5	12.0	8.0	9.7	500
054085211303	White	2	-	8.5	12.0	8.0	-	500
054085222003	Black	2	-	8.5	12.0	8.0	-	500
054085560003	White	2	-	8.5	15.0	8.0	-	500
054085569903	Black	2	-	8.5	15.0	8.0	-	500
055008422003	Black	2	-	8.5	12.0	4.0	-	500
055008411303	White	2	-	8.5	12.0	4.0	-	500
055008800003	Natural	2	-	8.8	11.5	8.0	9.5	500
055008822003	Black	2	-	8.8	11.5	8.0	9.5	500
055008811303	White	2	-	8.8	11.5	8.0	-	500
055009300003	Natural	3	-	9.3	12.0	9.0	11.5	500
055009322003	Black	3	-	9.3	12.0	9.0	11.5	500
055009311303	White	3	-	9.3	12.0	9.0	-	500
10905	Natural	1	M10	9.3	14.0	4.5	6.5	6000
494368	Black	1	M10	9.3	14.0	4.5	6.5	500
12978	Natural	1	1/8" BSP, M10 x 1.5	9.3	16.0	5.9	8.3	6000
055010100003	Natural	2	-	10.0	12.0	4.0	5.7	500
054100311303	White	2	-	10.0	12.0	4.0	-	500
054100322003	Black	2	-	10.0	12.0	4.0	-	500
054100260003	White	2	-	10.0	12.0	9.0	-	500
054100269903	Black	2	-	10.0	12.0	9.0	-	500
055010000003	Natural	2	-	10.0	15.0	9.0	11.2	500
054100560003	White	2	-	10.0	15.0	9.0	-	500
054100569903	Black	2	-	10.0	15.0	9.0	-	500
055010700003	Natural	3	-	10.5	14.8	8.7	11.4	500
055010722003	Black	3	-	10.5	14.8	9.0	11.4	500
055010711303	White	3	-	10.5	14.8	9.0	-	500
12977	Natural	1	M10 x 1.5	10.7	14.0	6.0	8.2	6000
494369	Black	1	M10x 1.5	10.7	14.0	6.0	8.2	500
125531	Natural	2	M12 x 1.25, M12 x 1	11.3	14.4	5.5	9.5	1000
055011900003	Natural	3	-	11.9	14.8	8.0	-	500
055011922003	Black	3	-	11.9	14.8	8.0	-	500
055011911303	White	3	-	11.9	14.8	8.0	-	500
110478	Natural	1	-	11.9	16.0	7.0	9.0	5000
494370	Black	1	-	11.9	16.0	7.0	9.0	500
054119860003	White	3	-	11.9	17.5	8.5	-	500
054119869903	Black	3	-	11.9	17.5	8.5	-	500
10906	Natural	1	M14 x 1.5	12.3	16.0	7.0	9.0	5000
494371	Black	1	M14 x 1.5	12.3	16.0	7.0	9.0	500
055012500003	Natural	3	-	12.8	17.5	9.0	11.9	500
055012522003	Black	3	-	12.8	17.5	9.0	-	500
055012511303	White	3	-	12.8	17.5	9.0	-	500
12979	Natural	1	M14 x 1.5	12.8	20.0	7.8	10.3	5000
494372	Black	1	M14 x 1.5	12.8	20.0	7.8	10.3	500
055013200003	Natural	3	-	13.2	17.5	8.0	-	500
1287226	Natural	1	M14 x 1.5, M14 x 1.25	13.3	18.7	7.0	9.0	1000
12787	Natural	1	-	13.7	20.0	8.0	10.0	5000
494373	Black	1	-	13.7	20.0	8.0	10.0	500

Barrel Plugs *CONTINUED*

SR 1011

Natural/White/Black LDPE



Type 1



Type 2



Type 3

Part Number	Colour	Type	To Fit Thread Size	Dimensions (mm)				Standard Pack Quantity
				d	D	h	H	
055013600003	Natural	3	-	13.9	19.5	9.0	-	500
1255332	Natural	2	M16 x 1.5	14.0	18.7	7.0	9.0	1000
12089	Natural	1	M16	14.5	20.0	5.5	7.5	5000
494374	Black	1	M16	14.5	20.0	5.5	7.5	500
055014300003	Natural	3	-	14.9	18.5	9.0	11.7	500
055014322003	Black	3	-	14.9	18.5	9.0	11.7	500
055014311303	White	3	-	14.9	18.5	9.0	-	500
1287225	Natural	1	M16 x 1.5	15.0	18.7	7.0	9.0	1000
055015400003	Natural	3	-	15.4	19.0	8.5	11.5	500
054154911303	White	3	-	15.4	19.0	8.5	-	500
054154922003	Black	3	-	15.4	19.0	8.5	-	500
12789	Natural	1	M18 x 2.5. 3/8" BSP	15.6	20.0	8.0	10.0	5000
494375	Black	1	M18 x 2.5. 3/8" BSP	15.6	20.0	8.0	10.0	500
055015700003	Natural	3	-	15.9	19.0	8.5	10.8	500
055015722003	Black	3	-	15.9	19.0	8.5	-	500
055015711303	White	3	-	15.9	19.0	8.5	-	500
1287229	Natural	2	M18 x 2. M18 x 1.5. M18 x 1	16.5	18.7	7.0	9.0	1000
055016800003	Natural	3	-	17.0	19.5	9.0	11.6	500
055016822003	Black	3	-	17.0	19.5	9.0	-	500
055016811303	White	3	-	17.0	19.5	9.0	-	500
12790	Natural	1	-	17.0	22.0	8.2	10.8	5000
494376	Black	1	-	17.0	22.0	8.2	10.8	500
055017200003	Natural	2	-	17.4	23.0	9.5	-	500
465687	Natural	1	M20 x 2	17.8	24.6	9.0	11.3	1000
12791	Natural	1	M20 x 2.5	18.4	25.0	8.0	10.5	5000
494377	Black	1	M20 x 2.5	18.4	25.0	8.0	10.5	500
055018300003	Natural	2	-	18.8	21.5	9.0	12.0	500
12792	Natural	1	1/2" BSP	19.3	25.0	8.0	11.0	5000
494378	Black	1	1/2" BSP	19.3	25.0	8.0	11.0	500
465688	Natural	1	M22 x 2	19.5	24.6	9.0	11.1	1000
055019600003	Natural	2	-	19.6	25.5	9.3	-	500
1255333	Natural	1	M22 x 1.5	20.1	24.6	9.0	11.1	500
055020000003	Natural	3	-	20.5	25.2	9.0	12.0	250
055020022003	Black	3	-	20.5	25.2	9.0	12.0	500
055020011303	White	3	-	20.5	25.2	9.0	-	500
12980	Natural	1	M22 x 1.5	20.5	30.0	10.7	13.2	3000
055021000003	Natural	2	-	21.0	25.6	12.6	15.6	250
055021022003	Black	2	-	21.0	25.6	12.6	15.6	500
055021011303	White	2	-	21.0	25.6	12.6	-	500
12793	Natural	1	3/8" BSP	21.2	25.0	7.5	9.5	5000
12794	Natural	1	-	21.7	25.0	8.0	10.5	4000
494379	Black	1	-	21.7	25.0	8.0	10.5	500
12796	Natural	1	M24 x 2	22.4	28.0	9.0	12.0	4000
494380	Black	1	M24 x 2	22.4	28.0	9.0	12.0	500
055022300003	Natural	3	-	22.6	29.0	9.0	-	500
055023000003	Natural	1	-	23.0	27.4	19.3	20.8	100
12797	Natural	1	-	23.4	28.0	9.0	12.0	4000
494381	Black	1	-	23.4	28.0	9.0	12.0	500

Barrel Plugs CONTINUED

SR 1011

Natural/White/Black LDPE



Type 1



Type 2



Type 3

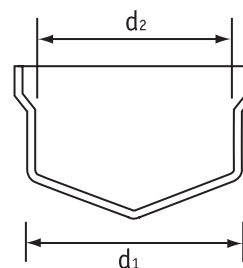
Part Number	Colour	Type	To Fit Thread Size	Dimensions (mm)				Standard Pack Quantity
				d	D	h	H	
055024000003	Natural	1	-	24.0	27.0	12.8	14.4	100
12799	Natural	1	M26. 3/4" BSP	24.6	28.0	9.0	12.0	3000
494382	Black	1	M26. 3/4" BSP	24.6	28.0	9.0	12.0	500
055025500003	Natural	2	-	24.8	31.5	6.0	8.2	100
055024500003	Natural	3	-	25.0	32.0	13.0	16.2	100
12800	Natural	1	M27	25.5	28.0	7.5	9.5	3000
494383	Black	1	M27	25.5	28.0	7.5	9.5	500
055026000003	Natural	3	-	26.0	31.5	12.3	-	500
055026100003	Natural	2	-	26.0	31.5	12.0	-	500
12801	Natural	1	M28 x 1.5	26.5	28.0	9.0	12.0	4000
494384	Black	1	M28 x 1.5	26.5	28.0	9.0	12.0	500
055027200003	Natural	2	-	27.0	29.6	15.0	16.4	100
465690	Natural	1	M30 x 3	27.5	34.8	12.0	14.5	500
055028600003	Natural	3	-	28.6	34.0	15.0	18.8	100
12802	Natural	1	-	29.0	36.0	12.0	15.0	3000
12803	Natural	1	7/8" BSP	30.5	36.0	12.0	15.0	2500
494385	Black	1	7/8" BSP	30.5	36.0	12.0	15.0	500
055031200003	Natural	3	-	31.2	38.0	13.0	-	500
12804	Natural	1	M33 x 1.5. 1" BSP	31.8	36.0	10.0	12.5	2000
1255334	Natural	1	M33 x 2. M33 x 1.5. M36 x 3	32.6	34.8	12.0	14.5	500
055033500003	Natural	3	-	33.5	41.0	12.0	14.8	100
12805	Natural	1	M35 x 1.5	33.5	36.0	12.0	15.0	2000
494386	Black	1	M35 x 1.5	33.5	36.0	12.0	15.0	500
055034000003	Natural	1	-	34.0	40.0	20.0	-	500
110479	Natural	1	-	34.8	42.0	15.0	18.0	2000
055035600003	Natural	2	-	35.5	46.5	15.0	19.5	100
110480	Natural	1	-	36.5	42.0	15.0	18.0	2000
055036500003	Natural	3	-	36.5	46.5	18.0	-	500
465692	Natural	1	M39 x 3	37.6	40.4	12.0	14.5	500
110481	Natural	1	-	38.4	42.0	15.0	18.0	2000
1258454	Natural	1	M39 x 1.5. M42 x 3	39.0	49.3	16.0	18.9	500
055039500003	Natural	3	-	39.5	46.0	16.0	-	500
110482	Natural	1	-	40.6	44.0	15.0	18.0	1500
055042000003	Natural	3	-	42.2	44.5	13.0	-	500
10122	Natural	1	-	42.3	48.0	15.0	18.0	1000
055043300003	Natural	3	-	43.3	50.5	15.0	18.0	100
055045500003	Natural	3	-	45.3	51.0	16.0	-	500
055045800003	Natural	3	-	45.8	51.0	16.0	-	500
110483	Natural	1	-	46.0	55.0	18.0	21.0	1500
055050500003	Natural	3	-	50.5	57.0	14.0	19.4	100
110484	Natural	1	1 3/4" BSP	51.5	55.0	18.0	21.0	1500
055052000003	Natural	3	-	52.5	60.0	14.0	17.5	100
465694	Natural	1	M56 x 4. M56 x 3. M56 x 2	54.1	58.7	18.0	21.0	500
055055300003	Natural	1	-	55.3	59.5	19.5	23.0	100
055055500003	Natural	3	-	55.5	59.0	16.0	-	500
055058000003	Natural	3	-	58.0	63.0	19.5	-	500
110485	Natural	1	2" BSP	58.0	64.0	18.0	21.0	750
465695	Natural	1	-	59.6	73.5	18.0	21.0	500
055061500003	Natural	3	-	61.0	74.0	19.0	-	250
12137	Natural	1	M72 X 2	70.0	78.0	18.0	21.5	500
055070000003	Natural	3	-	70.0	80.0	18.0	-	250
465696	Natural	1	M75 x 1.5	73.7	82.3	17.4	20.4	250
1287227	Natural	1	M80 x 4	80.8	92.5	17.4	20.4	250
055085000003	Natural	1	-	85.0	93.5	18.0	19.7	50
465698	Natural	1	M76 x 2	86.5	99.3	17.4	20.4	250
465699	Natural	1	M100 x 2	98.8	112.0	17.4	20.4	250
055110000003	Natural	2	-	110.5	130.0	18.0	21.5	50
465700	Natural	1	M115 x 4	111.7	123.0	17.4	20.4	250

Flexiplugs

SR 1070

Black Flexible PVC

- Ideal for threaded and plain holes
- Resistant to splitting and shredding

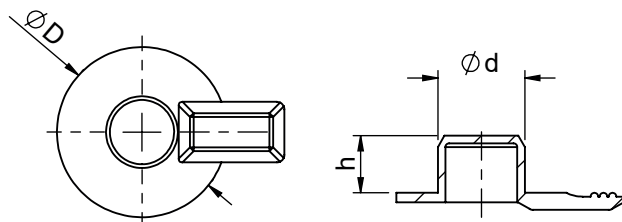


Part Number	Dimensions (mm)		To Fit Thread Size		Standard Pack Quantity
	d1	d2	UNF	Metric	
FPWA-072	7.2	4.4	3/16"	M8	5000
FPWA-091	9.1	6.4	3/8"	M10	5000
FPWA-103	10.3	7.5	7/16"	-	5000
FPWA-118	11.8	9.0	1/2"	M12	5000
FPWA-135	13.5	10.7	9/16"	M14	5000
FPWA-154	15.4	12.6	5/8"	M16	5000
FPWA-191	19.1	16.3	3/4"	M20	2000
FPWA-216	21.6	18.8	7/8"	M24	2500
FPWA-258	25.8	23.0	1 1/16"	M27	2500
FPWA-302	30.2	27.4	1 3/16"	M33	2500

Parallel Plug with Tear Tab

SR: F-0000

LDPE Black



Part Number	Dimensions (mm)			Standard Pack Quantity
	d	D	h	
110817	7.5	18.5	6.5	5000
110818	11.5	22.5	7.6	5000
110819	15.5	28.5	10.0	2000

Ezeplugs

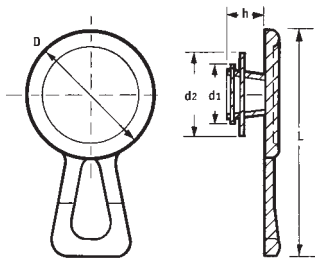
SR 1055

Red LDPE

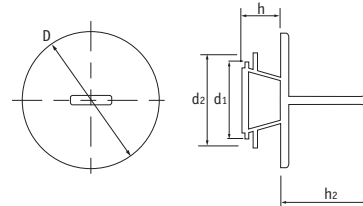
- Patented design
- Simple push fit
- Fit threaded or plain ports
- Six sizes cover over 29 popular thread sizes
- Strong, flexible pull-tab for quick removal



Type 1 - Lateral Pull



Type 2 - Central Pull



Type 1 – Lateral Pull

Part Number	To Fit Thread Size			Dimensions (mm)					Standard Pack Quantity
	UNF	BSP	Metric	h	D	d1	d2	L	
10093	7/16"	3/8"	M10, M12	9.0	19.0	9.0	13.2	34.0	5000
10094	1/2", 3/8", 9/16"	3/4"	M14, M16	6.7	22.7	11.7	16.4	40.0	5000
10095	3/4"	3/8"	M18, M20	8.0	30.0	15.5	19.5	47.0	4000
10096	7/8"	1/2", 5/8"	M22, M24	9.5	34.3	19.3	23.8	51.4	3000
10778	1 1/16", 1 1/8"	3/4"	M26, M28	9.5	40.0	22.5	27.6	57.0	2000
110001	1 1/4", 1 3/8"	1"	M30, M36	10.0	45.0	29.9	34.5	62.0	1500

Type 2 – Central Pull

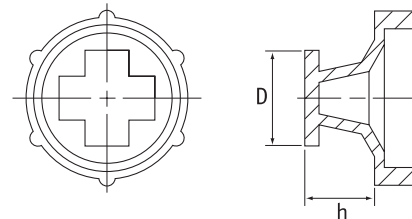
Part Number	To Fit Thread Size			Dimensions (mm)					Standard Pack Quantity
	UNF	BSP	Metric	h	D	d1	d2	h2	
467027	7/16"	3/8"	M10, M12	9.0	19.0	9.0	13.2	21.2	500
467028	1/2", 3/8", 9/16"	3/4"	M14, M16	7.0	22.7	12.0	16.5	21.2	500
467029	3/4"	3/8"	M18, M20	8.0	29.5	15.0	19.5	21.4	250
467030	7/8"	1/2", 5/8"	M22, M24	9.5	34.3	19.3	23.8	21.4	250
467031	1 1/16", 1 1/8"	3/4"	M26, M28	9.5	40.0	22.5	27.6	21.5	100
467032	1 1/4", 1 3/8"	1"	M30, M36	10.0	45.0	29.9	34.5	21.6	100

Uniplugs

SR 1039

Red LDPE

- Unique design allows quick and secure fitting into threaded holes



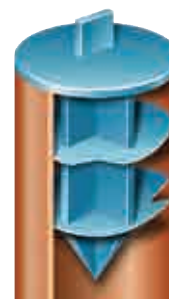
Part Number	To Fit Thread Size				Dimensions (mm)		Standard Pack Quantity
	NPT	UNF	BSP	Metric	h	D	
10538	3/8"	7/16"	3/8"	M10	11.0	6.1	10000
15987	-	1/2"	3/4"	M12	12.3	8.3	10000
10537	1/4"	9/16"	-	M14	14.5	7.2	10000
10533	-	3/4"	1/2"	M20	19.7	9.5	5000
10532	-	1"	5/8-3/4"	M22-26	25.1	11.3	5000
10515	3/4"	1 1/16"	7/8"	M30	31.4	11.0	2000
10531	-	1 1/16"	1"	M33-36	37.7	12.5	2000

Finned Plugs

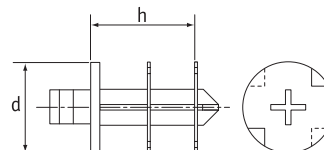
SR 1069

Blue LDPE

- Prevents ingress of dirt into tubing
- Quick to fit and remove
- Small unobtrusive pull-tab
- Ideal for use in thin-walled copper tube



Part Number	Dimensions (mm)			Standard Pack Quantity
	d (ins)	To Fit Tube Dia (mm)	h (mm)	
110771	3/8"	9.5	9.0	5000
110772	1/2"	12.7	12.2	5000
110773	5/8"	15.9	15.2	5000
110774	3/4"	19.0	18.5	2500
110775	7/8"	22.2	21.7	2500
110776	1 1/8"	28.6	28.0	2500



Flangeless Plugs

SR 1034

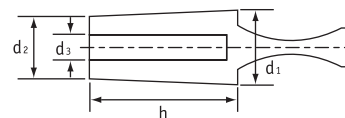
Black PVC

- Tapered shank and hollow core
- Each size fits a range of threads



Part Number	Dimensions (mm)				Standard Pack Quantity
	d1	d2	h	d3	
10510†*	3.2	1.5	15.0	-	10000
10398†*	5.0	3.0	15.0	-	10000
18409†*	6.0	4.0	25.0	-	6000
11132	8.0	6.0	25.0	2.5	6000
11133	10.0	8.0	25.0	4.0	4000
11134	12.0	10.0	25.0	6.0	4000
11135	14.0	12.0	25.0	8.0	3000
11136	16.0	14.0	25.0	10.0	2000
11137	18.0	16.5	25.0	12.0	2000

† Thermoplastic rubber. * Plain Shanks.



Collar Plugs

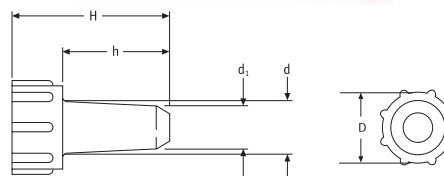
SR 1160

Orange LDPE

- Self-tapping design
- Highly durable due to thick wall



Part Number	Size	Dimensions (mm)					Standard Pack Quantity
		D	d	d1	H	h	
464111	M2	8.0	2.0	1.3	14.5	7.5	5000
464112	M3	8.0	3.0	2.2	20.0	12.0	5000
464113	M4	8.0	3.9	2.9	22.5	15.0	2500
464114	M5	9.0	5.0	3.7	27.5	17.5	2500
464115	M6	10.0	5.8	4.4	27.5	17.5	2500
464116	M7	11.0	6.5	5.2	27.5	17.5	2500
464117	M8	14.0	7.5	6.2	27.5	17.5	2000
464118	M9	14.0	8.5	6.8	27.5	17.5	2000
464119	M10	16.0	9.5	7.6	30.5	20.5	1500
464120	M12	18.0	11.0	9.6	30.5	20.5	1500

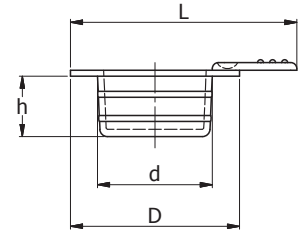
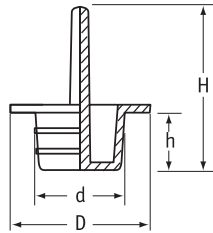


Moss Pull Plugs

SR 1067

Black Thermoplastic Elastomer

- Protect threaded or plain components
- Handy pull-tab for easy removal
- Acid-resistant
- Material temperature: -50°C to +95°C
- Ideal for hydraulic and general engineering applications



Type 1 – Central Pull Plugs

Part Number	Thread Size	Dimensions (mm)				Standard Pack Quantity
		d	D	h	H	
464905	M8	7.5	15.5	8.0	24.0	500
110043	M10	9.5	17.5	8.0	30.0	8000
110044	M12	11.5	19.5	8.0	30.0	7000
110045	M14	12.8	21.5	10.0	30.0	6000
110046	M16	15.2	23.5	10.0	32.0	4000
464906	M18	17.0	26.0	10.0	30.0	500
464907	M20	19.4	27.5	12.0	26.0	500
464908	M22	21.4	29.5	12.0	26.0	250
464909	M24	23.5	28.5	12.0	26.0	250

Type 2 – Lateral Pull Plugs

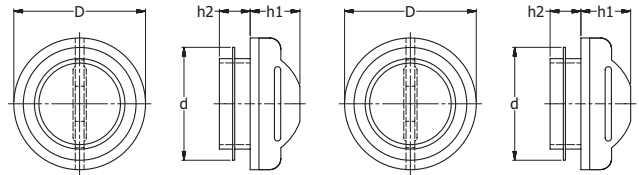
Part Number	Thread Size	Dimensions (mm)				Standard Pack Quantity
		d	D	h	H	
464857	M6	5.5	15.5	8.0	23.2	500
110291	M8	7.5	15.0	8.0	25.3	7000
110280	M10	9.5	17.0	8.0	27.3	7000
110281	M12	11.5	17.0	8.0	27.5	7000
110282	M14	13.0	21.0	10.0	31.0	6000
110283	M16	15.5	23.0	10.0	33.3	4000
110294	M18	17.0	26.0	10.0	35.5	4000
464858	M20	19.4	27.5	12.0	37.1	500
464859	M22	21.4	29.5	12.0	39.4	250
464860	M24	23.5	28.5	12.0	40.8	250

Snap-Fit Plugs

SR 1008

Red LDPE

- Single turn gives tight fit once pushed into position



Part Number	To Fit Thread Size			Dimensions (mm)				Standard Pack Quantity
	Metric	BSP/GAS	UNF/JIC	h	D	d1	h2	
10530	M10	1/8"	7/16"	9.8	-	6.0	4.0	12000
12363	M12, M13, M14	1/4"	1/2"	13.1	15.8	12.0	5.0	10000
12364	M16	3/8"	5/8"	16.5	19.5	14.0	5.0	10000
10314	M18	-	3/4"	18.3	21.5	11.5	7.0	7000
12365	M20	1/2"	-	21.3	22.7	12.0	7.0	5000
12366	M22	5/8"	7/8"	22.4	25.8	12.0	7.0	5000
12621	M24	-	-	23.5	28.2	12.0	7.0	3000
12367	M25, M26	3/4"	1 1/16"	25.5	29.9	12.0	7.0	2000
12368	M28	7/8"	1 1/8"	27.9	32.7	12.0	7.0	3000
12369	M32	1"	1 5/16"	32.0	35.6	12.0	7.0	2500
12622	M36	1 1/8"	1 1/2", 1 3/8"	35.7	39.7	12.0	7.0	2000
12598*	M40, M42	1 1/4"	1 5/8"	41.5	45.4	7.0	7.0	2000

*Pull-tab not as illustrated.

Hinge-Bearing Protection Plug Closed

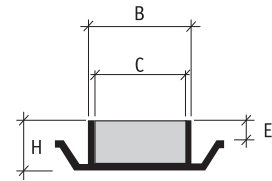
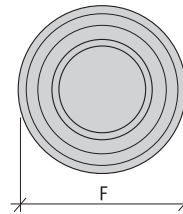
SR F-0007

Polypropylene Grey

- Robust protection
- Prevents dirt and dampness to enter hinges-bearings and swivel joints
- Temperature: Min. -10°C, Max. +110°C



Part Number	Dimensions (mm)					Standard Pack Quantity
	B	C	H	F	E	
3430000	12.0	10.4	7.0	22.0	4.5	1000
3430500	16.0	14.4	9.0	28.0	6.0	1000
3391000	20.0	16.8	9.7	34.0	5.9	1000
3431000	20.0	17.5	9.1	35.1	4.1	1000
3392000	25.0	21.7	11.8	40.4	8.1	500
3432000	25.0	22.5	11.3	42.1	3.9	500
3393000	30.5	27.1	13.5	44.2	10.0	500
3433000	32.0	29.5	15.0	52.1	6.5	250
3394000	35.5	31.9	13.6	53.0	9.5	250
3433500	35.0	32.0	17.3	53.1	8.8	250
3395000	40.5	37.0	16.3	60.0	9.8	250
3434000	40.0	37.5	19.1	62.1	7.8	250
3396000	45.5	41.7	15.9	65.2	11.0	200
3434500	44.2	42.4	20.8	70.0	8.1	800
3397000	50.5	47.2	17.0	71.7	11.8	200
3435000	50.0	47.5	23.7	75.1	10.2	600
3398000	60.5	56.8	20.0	85.9	14.1	500
3436000	63.0	60.5	30.4	94.5	14.8	300
3399000	70.5	66.8	20.0	100.7	13.7	400
3400000	80.5	76.9	20.0	110.7	13.7	300
3401000	90.5	87.5	18.2	119.9	11.5	250
3402000	100.5	97.5	20.0	130.4	14.5	250
3403000	120.5	116.0	21.5	175.0	11.0	100



YOUR JOB MADE EASIER:

- **FREE SAMPLES** – try before you buy
- **SMALL PACKS** – available in the quantities you need
- **RELIABLE DELIVERY** – same day shipping from stock
- **OUTSTANDING CUSTOMER SERVICE** – expert advice

Call 0845 758 5070

www.essentracomponents.co.uk



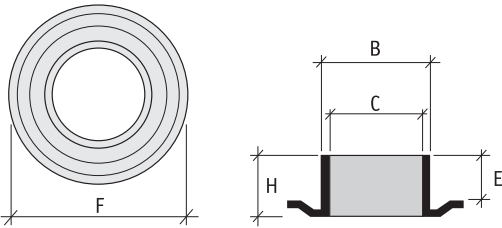
Hinge-Bearing Protection Plugs Opened

SR F-0008

Polypropylene Grey



- Robust protection preventing dirt and dampness to enter hinges-bearings and swivel joints
- Profile has an open centre to provide opportunity to suspend the part during storage and painting
- Temperature: Min. -10°C, Max. +110°C



Part Number	Dimensions (mm)					Standard Pack Quantity
	B	C	H	F	E	
3410900	12.0	11.0	6.4	21.0	3.5	1000
3410852	16.0	13.8	7.8	29.0	4.5	1000
3411000	20.0	17.0	12.2	33.8	8.5	500
3411500	25.0	22.0	14.0	40.2	10.0	500
3412000	30.0	27.0	15.0	44.3	10.9	500
3413000	35.0	32.0	17.0	53.0	12.4	250
3414000	40.0	37.0	20.6	59.7	14.1	250
3415000	50.0	47.0	23.1	71.5	17.3	750
3416000	60.0	57.1	28.5	85.5	22.4	400

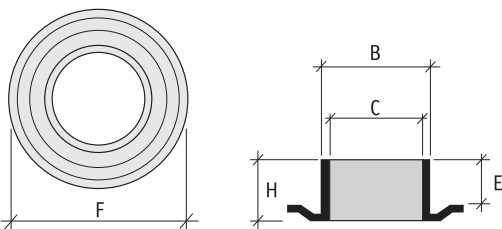
Hinge-Bearing Protection Plugs Opened

SR F-0016

LDPE Yellow



- Robust protection preventing dirt and dampness to enter hinges-bearings and swivel joints
- Profile has an open centre to provide opportunity to suspend the part during storage and painting
- Temperature: Min. -30°C, Max. +50°C



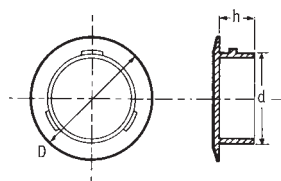
Part Number	Dimensions (mm)					Standard Pack Quantity
	B	C	H	F	E	
3483100	20.0	17.7	8.5	32.0	5.0	1000
3483200	25.0	22.7	10.5	39.8	7.0	500
3483300	30.0	27.7	11.5	46.5	8.0	500
3483400	35.0	32.7	13.0	54.5	9.0	250
3483500	40.0	37.0	14.7	60.0	10.0	250
3483600	45.0	42.0	17.0	66.0	11.5	200
3483700	50.0	47.4	18.5	73.0	13.0	1000
3483800	60.0	56.7	23.0	85.0	18.5	400
3483900	70.0	67.0	25.5	99.5	20.0	300
3484000	80.0	76.5	28.5	115.0	22.0	250

Push-In Plugs

SR 1010

LDPE

- Quick fitting
- Suitable for most applications



Blue UNF/JIC

Part Number	Thread Size	Dimensions (mm)			Standard Pack Quantity
		D	h	d	
12512	7/16" x 20	15.5	7.0	9.5	10000
12513	1/2" x 20	17.0	7.0	11.0	10000
12514	9/16" x 18	20.5	7.0	12.5	10000
12515	5/8" x 18	23.7	6.5	14.3	10000
12516	3/4" x 16	24.9	8.6	17.4	8000
12517	7/8" x 14	26.6	10.4	20.3	5000
12518	1" x 14	31.0	10.0	23.5	4000
12519	1 1/16" x 12	35.5	10.0	24.8	2000

Red Without Lugs

Part Number	Dimensions (mm)			Standard Pack Quantity
	D	h	d	
12520	16.4	6.3	11.9	5000
12522	23.8	7.0	19.2	5000
12523	30.0	6.1	25.5	2500
12524	35.0	8.0	30.9	2000

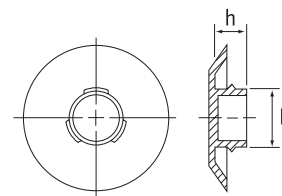
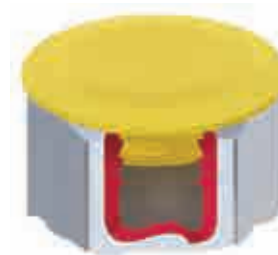
Straight Pull Plugs

SR 1119

Yellow LDPE

- Provides all the advantages of a threaded plug with the ease of a push-in style

Part Number	To Fit UNF Thread Size	Dimensions (mm)		Standard Pack Quantity
		D	h	
I-1/4	1/4"	5.2	5.6	5000
I-5/16	5/16"	6.7	6.0	5000
I-3/8	3/8"	8.2	6.0	3000
I-7/16	7/16"	9.7	6.9	3000
I-1/2	1/2"	11.1	6.9	5000
I-9/16	9/16"	12.6	7.4	5000
I-5/8	5/8"	14.2	7.4	7500
I-11/16	11/16"	15.5	7.4	7000
I-3/4	3/4"	17.2	7.4	6000
I-13/16	13/16"	18.6	7.4	5000
I-7/8	7/8"	20.3	7.4	4500
I-1	1"	23.4	7.4	3500
I-1-1/16	1 1/16"	24.7	7.4	3000
I-1-3/16	1 3/16"	27.7	8.6	2000
I-1-1/4	1 1/4"	29.5	8.6	2000
I-1-5/16	1 5/16"	30.9	8.6	2000
I-1-5/8	1 5/8"	38.7	11.7	1000
I-1-7/8	1 7/8"	45.1	11.7	800



Small Containers with Lids

SR 1651

Natural LDPE

- Snap-fit lids
- Ideal for small components and pastes

Part Number		Nominal Capacity (ml)	Internal Dimensions (mm)		Standard Pack Quantity
Base	Lid		D	h	
10514	10513	2.0	21.0	6.4	3000
1293853	1293855	10.0	33.3	10.7	3000
1295114	1295112	17.5	42.0	13.0	1500
1316297	1295113	30.0	51.5	14.5	1000
1316295	1295115	40.0	38.5	35.6	1500
1316296	1295113	100.0	50.8	51.0	500



LPG Caps/Plugs

SR 1085

LDPE

- Developed with the LPG industry
- Help prevent dangerous gas leaks
- Meet LP Gas Association Code of Practice 15: Part 2
- Strapped to help prevent loss and for ease of replacement
- Marked with direction of fitting/removal

- Test Pressure
- Propane/mixes (styles 1 and 2) 26 bar
- Butane (style 3) 26 bar
- Independently tested to withstand these pressures, while providing gas-tight seal, even under extreme temperatures and adverse conditions (test results and certificate available on request)
- Materials Type 1: Plug: HDPE, Strap: LDPE. Type 2: Cap: HDPE. Type 3: Cap: HDPE, Strap: LDPE



Type 1



Type 2



Type 3

Part Number	Type	*Service Connection	**Valve Type	Valve Description	Main Gas Type	Standard Pack Quantity
464905	1	105	-	P.O.L ½" BSP - LHT	Propane	1000
110043	2	109	A	W21.8 x ½" LHT	Various	250
110044	3	403	-	20mm 'Quick-On'	Butane	1000

*According to LP Gas Association Code of Practice 15: Part 2.

**According to DIN 477 Part 1.

WE MAKE IT EASY!

- Easy to buy online
- Easy to request free samples
- Easy to find products
- Easy to download 3D CAD files

www.essentracomponents.co.uk

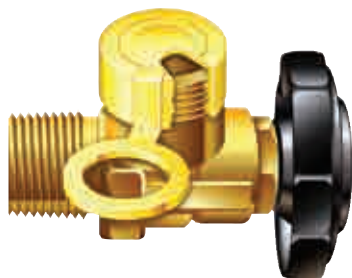


Gas Cylinder Valve Protectors

SR 1060

Yellow LDPE

- Developed in conjunction with major European gas companies
- Tamper evident
- Protect industrial gas valves from ingress of dust and dirt
- Unique vent flap allows safe release of gas following accidental opening of valve



Type 1



Type 2



Type 3



Type 4



Type 5



Type 6

Part Number		Nominal Diameter (mm)	Type	To Fit BS Valves†	Main Gases	Standard Pack Quantity
Standard	Vent Flap					
12940	110048*	21.7	1	-	-	2000
10781	110009	21.8	1	8	CO ₂	2000
110007	110008	24.3	1	-	-	2000
10783	-	25.4	1	-	-	2000
110005	110006	26.4	1	-	-	2000
10784	-	28.8	1	-	-	2000
10785	110004	22.2	2	2, 3, 4	N ₂ , O ₂ , H ₂ , He, C ₂ H ₂ , Ar	2500
10787	-	25.0	3	-	Medical	2000
110049	-	20.0	4	-	-	500
110583	-	30.0	4	-	-	500
110239	110240	30.0	5	**Nevoc	-	1000
-	110586	35.0	5	-	-	1000
-	110588	38.0	5	-	-	1000
110589	-	21.8	6	8	CO ₂	500
110590	-	24.3	6	-	-	500
110832	-	28.0	6	-	-	500
110592	-	30.0	6	**Nevoc	-	500

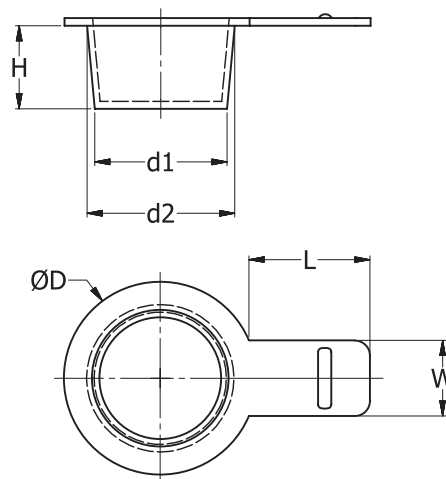
*Supplied with vent strip. †According to standard BS341. **Designed especially for N.E.V.O.C. valves with 30mm Whitworth outlets, as increasingly used on 300-bar cylinders. Other colours available; please contact our sales office for more details.

Tapered Plug with Lateral Pull Tab

SR 1053

Natural Thermoplastic Elastomer

- The soft and flexible material provides a close fit
- The lateral pull tab makes for easy removal
- Suitable for various applications



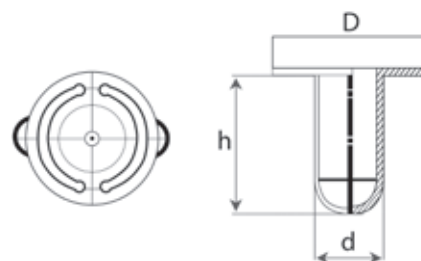
Part Number	Dimensions (mm)						Standard Pack Quantity
	d ₁	d ₂	D	H	W	L	
494297	5.0	7.0	11.0	9.5	7.0	15.0	5000
494298	6.0	8.0	12.0	9.5	7.0	15.0	5000
494299	7.0	9.5	13.5	9.5	7.0	15.0	5000
494300	8.0	10.0	14.0	9.5	8.0	15.0	5000
494301	9.5	11.5	15.5	9.5	8.0	15.0	5000
494302	10.5	12.5	16.5	9.5	8.0	15.0	5000
494303	11.5	13.5	17.5	9.5	8.0	15.0	5000
494304	12.5	14.5	18.5	10.0	8.0	15.0	5000
494305	13.5	15.5	19.5	10.0	10.0	15.0	5000
494306	14.2	16.2	20.2	10.0	10.0	15.0	5000
494307	14.5	17.0	21.0	10.0	10.0	15.0	2000
494308	15.5	18.0	22.0	10.0	10.0	15.0	2000
494309	17.5	19.5	23.5	10.0	10.0	15.0	2000
494310	19.0	21.5	25.5	11.0	10.0	15.0	2000
494311	21.0	23.5	27.5	11.0	10.0	15.0	2000
494312	22.5	25.5	29.5	12.0	12.0	15.0	2000
494313	25.0	28.0	32.0	12.0	12.0	15.0	2000
494314	29.0	31.5	35.5	12.0	12.0	15.0	2000

Quick-Fit Connector Plug

SR F-0009

LDPE Yellow

- Protection plug for fuel system quick fit connectors
- Ring tab allows an easy removal and cover the connector wall when fitted



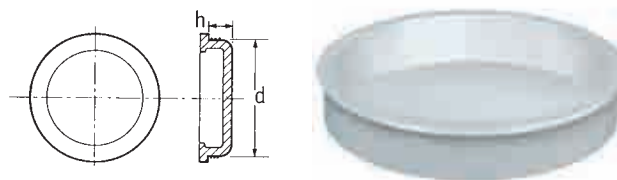
Part Number	To fit SAE J2044	Dimensions (mm)			Standard Pack Quantity
		d	h	D	
1460769	12	11.8	34.5	34.0	5000
1460770	½	12.8	35.0	35.0	5000
1460771	⅝	15.8	32.0	37.0	5000
1460772	24	24.0	30.0	46.0	5000

Tube End Plugs

SR 1601

White LDPE

- Secure closures for postal tubes, composite containers and clear plastic tubing



Shallow Range

Part Number	Dimensions (ins)		Standard Pack Quantity
	d	h	
12360	1.25	0.25	3000
12361	1.37	0.25	3000
12362	1.62	0.25	2000
11926	2.0	0.25	1200
11927	2.25	0.25	2000
11928	2.5	0.25	2000
11930	3.0	0.25	500

Metric Range

Part Number	Dimensions (ins)		Standard Pack Quantity
	d	h	
11619	25.0	8.0	12500
11587	30.0	8.4	8000
12641	40.0	7.8	5000
12305#*	46.0	10.5	3000
12642	50.0	6.9	3000
10920	54.0	8.0	2500
12643	60.0	7.0	2000
12306#	63.0	10.5	1200
12644	71.5	8.0	1800
12307	78.4	10.8	800
12645	80.0	10.2	1000
10724	99.0	8.8	700
12646	100.0	10.8	500
12974	108.0	10.7	500
12964	150.0	12.2	200

#Finger grip style *Comes with a vent hole option.

Imperial Range

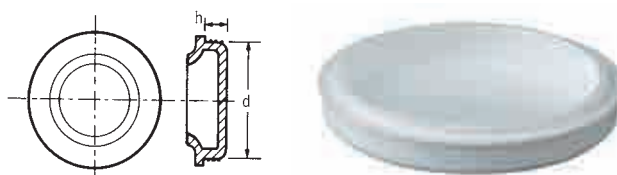
Part Number	Dimensions (ins)		Standard Pack Quantity
	d	h	
11123	1.5	0.375	2000
10290	1.75	0.375	1200
15141*	2.0	0.45	3000
10148	2.25	0.375	2000
15142*	2.5	0.45	2000
12300	2.56	0.375	1500
10291	2.75	0.437	1500
1330786*	3.0	0.43	1000
11357	3.25	0.50	800
12730	3.3	0.375	800
11358	3.5	0.50	700
11600	3.75	0.50	700
10138	4.0	0.50	600
11888	4.5	0.50	500
12304	4.75	0.50	400
11450	5.0	0.60	300
11898	5.5	0.50	300
11572	6.0	0.59	150
11974	6.5	0.58	200
51854	8.0	0.50	100

*Incorporate bevelled lead-in for easy insertion.

Tube End Plugs with All-Round Grip

SR 1603

White LDPE



Imperial Range

Part Number	Dimensions (ins)		Standard Pack Quantity
	d	h	
12580	2.0	0.38	2000
12624	2.25	0.38	2000
10301	2.5	0.32	1500
12561	3.0	0.35	1000
12626	3.5	0.5	700
12627	4.0	0.32	600
12628	5.03	0.6	250
12629	6.0	0.5	150

Metric Range

Part Number	Dimensions (ins)		Standard Pack Quantity
	d	h	
12580	50.0	9.5	2000
12581	60.0	9.5	1800
12582	66.0	7.5	750
10725	71.0	6.0	1000
12560	70.0	9.5	1000
12584	95.0	7.5	600

Ribbed Tube End Plugs

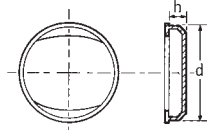
SR 1604

White or Red LDPE

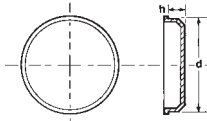
- Option with finger grip for easy removal



With finger grips



Without finger grips



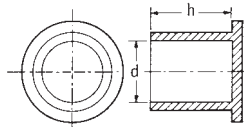
Part Number			Dimensions (ins)		Standard Pack Quantity
With Finger Grips		Without Finger Grips	d	h	
White	Red				
10254	10422	-	30.0	7.8	10000
199500	199104	10228	40.0	10.8	4000
199501	199126	10242	50.0	10.8	2500
199502	199128	10245	60.0	10.7	1750
199503	199175	10246	70.0	10.5	1000
199504	199060	10247	80.0	12.5	800
199505	199152	-	90.0	12.5	600
199506	199166	10248	100.0	12.5	500
10542	50126	-	110.0	12.8	350
199507	199508	-	120.0	12.2	300
10543	50192	-	125.0	13.0	300
10544	50194	-	135.0	13.3	200

Stud Protection Caps

SR 1024/25/1124

LDPE

- Used throughout the automotive and engineering industries for protecting exposed studs



SR 1024 Natural LDPE

Metric with Knurled Head

Part Number	Dimensions (ins)		Standard Pack Quantity
	d	h	
12754	5.0	13.0	10000
12756	6.0	10.0	10000
12757	8.0	10.0	10000
12758	8.0	16.0	10000
12760	12.0	16.0	8000
10719	12.8	20.2	8000
12763	14.0	20.0	5000
12765	16.0	15.0	5000
12766	16.0	20.0	3000
12769	20.0	15.0	3000
12770	20.0	20.0	2000
12771	22.0	18.0	2000
12772	24.0	18.0	2000

SR 1124 Natural LDPE Imperial Range

Part Number	UNF Thread	Dimensions (mm)			Standard Pack Quantity
		D	d	h	
E-3/8-A	3/8"	14.7	9.6	15.7	5000
E-1/2	1/2"	18.2	12.5	11.7	4000
E-9/16	9/16"	20.5	14.0	12.5	5900
E-3/4-CAT	3/4"	25.5	18.5	15.9	3000
E-13/16	13/16"	26.9	20.3	14.5	2500
E-7/8-CAT	7/8"	27.8	22.0	21.1	3500
E-1	1"	31.6	25.0	16.8	1500
E-1-3/16	1 3/16"	36.3	29.8	19.3	2000
E-2-1/2	2 1/2"	70.0	63.3	30.7	350

SR 1025 Red LDPE

Part Number	Dimensions			Standard Pack Quantity
	d		h	
	(ins)	(mm)	(mm)	
11098*	-	4.4	12.7	5000
51534*	3/4"	6.4	41.3	7000
50454	3/16"	7.9	19.1	10000
60273	-	7.5	38.1	5000
10660	-	9.1	27.2	7000
11906	7/16"	11.1	23.8	6000
51051	-	11.9	22.2	5000
10618	-	11.9	28.6	4000
11160	-	12.7	27.3	4000
10243	1/2"	12.7	46.0	2500
11162	-	14.0	21.0	5000
10723	9/16"	14.3	33.6	1500
10720	5/8"	15.9	23.8	3000
60864	5/8"	15.9	71.8	1000
10691	3/4"	19.0	33.6	2000
10191	13/16"	20.6	36.5	1200
10426	7/8"	22.2	77.8	500
10959	-	23.5	55.5	600
11270	1"	25.4	62.8	500
11292	1 1/8"	28.6	62.8	400
11319	1 1/4"	32.0	58.5	1000
60807	1 1/2"	38.1	44.5	400

*Black PVC

Mini Flange Stud Protection Cap

SR1380

LDPE Natural

- Used to protect BSP/UNF Thread
- The small flange allows easy fitting with socket wrench

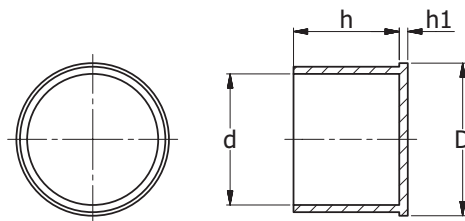


BSP

Part Number	Thread Size	Dimensions (mm)				Standard Pack Quantity
		d	D	h1	h	
110855	3/4" x 14	26.0	29.0	1.2	19.5	2000
110853	3/8" x 19	16.3	19.3	1.0	12.0	2000
110857	1/4" x 19	12.8	15.8	1.0	10.0	2000

UNF

Part Number	Thread Size	Dimensions (mm)				Standard Pack Quantity
		d	D	h1	h	
110856	9/16" x 18	13.8	16.8	1.0	12.0	2000
110859	11/16" x 16	17.0	20.0	1.0	13.0	2000
110854	3/4" x 16	18.6	21.6	1.2	15.0	2000
110858	13/16" x 16	20.2	23.2	1.2	15.0	2000



Straight Flanged Caps

SR 1116

Natural LDPE

- Typically used to protect BSP/NPT threads with or without O-Rings

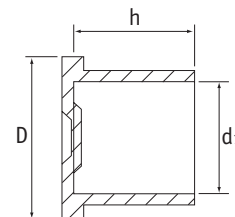


Imperial

Part Number	BSP/NPT Thread	Dimensions (mm)			Standard Pack Quantity
		D	d1	h	
ECS-0125	1/8"	16.8	10.1	9.7	10000
ECS-0250	1/4"	20.6	13.5	13.5	9000
ECS-0375	3/8"	23.9	17.0	13.5	5000
ECS-0500	1/2"	27.7	21.2	18.3	3000
ECS-0750	3/4"	33.3	26.5	19.1	2000
ECS-1000	1"	39.6	33.3	23.6	1000
ECS-1250	1 1/4"	49.3	42.0	24.6	800
ECS-1500	1 1/2"	54.9	48.1	24.6	600
ECS-2000	2"	66.6	60.2	26.2	500

Metric

Part Number	To Fit Metric Thread	Dimensions (mm)			Standard Pack Quantity
		D	d1	h	
ECM-10	M10	13.5	9.8	16.9	8000
ECM-12	M12	19.5	11.8	12.0	7000
ECM-14	M14	21.5	13.7	12.0	5000
ECM-16	M16	23.5	15.7	12.0	5000
ECM-18	M18	25.5	17.7	12.0	3000
ECM-20	M20	27.5	19.7	14.1	2500
ECM-22	M22	29.5	21.7	14.1	3000
ECM-33	M33	40.4	32.6	17.5	2000
ECM-38	M38	44.5	37.6	19.0	1000

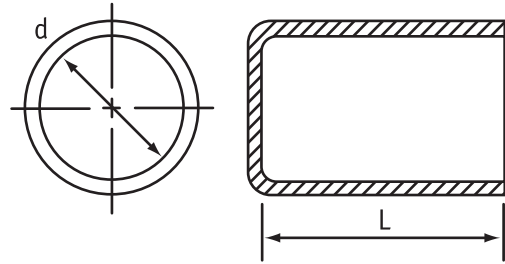
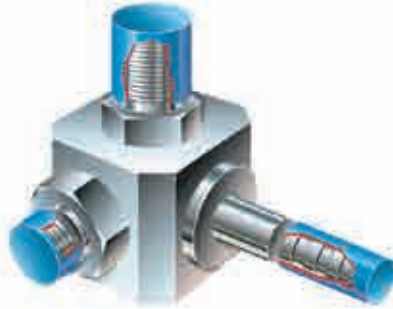


Non-Threaded End Caps

SR 1062

Blue LDPE

- Available in a wide range of sizes
- Ideal for protecting threaded or non-threaded tubing, pipes and rods



Part Number	Dimensions				Standard Pack Quantity
	d		L		
	(ins)	(mm)	(ins)	(mm)	
A3/32W/RA	3/32"	2.4	19/32"	15.9	5000
A1/8W/RA	3/8"	3.2	19/32"	15.9	5000
110549	5/32"	3.9	5/8"	15.8	45000
110550	3/16"	4.7	5/8"	15.8	35000
110551	1/4"	6.3	7/8"	22.2	5000
L1/4A	1/4"	6.4	1 3/4"	44.5	7500
AS9/32A	9/32"	7.1	1/2"	12.7	6500
A9/32A	9/32"	7.1	7/8"	22.2	6500
AC5/16W/RA	5/16"	7.5	7/8"	22.2	6000
110552	5/16"	7.9	7/8"	22.2	10000
L5/16A	5/16"	8.0	1 3/4"	44.5	4500
110553	3/8"	9.5	7/8"	22.2	8500
L3/8A	3/8"	9.5	1 3/4"	44.5	3800
AS7/16A	7/16"	11.1	1/2"	12.7	6000
110554	7/16"	11.1	7/8"	22.2	7000
A1/2BA	1/2"	11.9	7/8"	22.2	5000
AS1/2A	1/2"	12.7	1/2"	12.7	5000
110555	1/2"	12.7	7/8"	22.2	5000
110556	9/16"	14.2	7/8"	22.2	4000
AS9/16A	9/16"	14.3	9/16"	14.3	6500
A9/16A	9/16"	14.3	7/8"	22.2	4000
110557	5/8"	15.8	7/8"	22.2	3500
AS5/8A	5/8"	15.9	3/8"	9.5	4250
110558	1 1/16"	17.4	7/8"	22.2	3000
AS11/16W/RA	1 1/16"	17.5	3/4"	19.5	4000
A23/32A	23/32"	18.3	-	33.3	1700
K505A	23/32"	18.3	1 1/2"	38.1	2800
110559	3/4"	19.0	7/8"	22.2	5000
AS3/4A	3/4"	19.1	3/8"	9.5	6000
110560	13/16"	20.6	7/8"	22.2	4500
AS13/16W/RA	13/16"	20.7	1 1/2"	38.1	6000
AS7/8W/RA	7/8"	22.2	1/2"	12.7	3500
110561	7/8"	22.2	7/8"	22.2	4000
L7/8A	7/8"	22.2	1 3/4"	44.5	2000
110562	15/16"	23.8	13/16"	20.6	3500

Part Number	Dimensions				Standard Pack Quantity
	d		L		
	(ins)	(mm)	(ins)	(mm)	
A63/64A	63/64"	24.9	19/16"	33.3	2000
110563	1"	25.4	3/4"	19.0	3500
AL1A	1"	25.4	1"	25.4	2500
L1B	1"	25.4	1 3/4"	44.5	1400
110564	1 1/16"	26.9	7/8"	22.2	3000
110565	1 1/8"	28.5	7/8"	22.2	2500
110566	1 3/16"	30.1	1"	25.4	2000
110567	1 3/4"	31.7	7/8"	22.2	2000
AS1-1/4A	1 1/4"	31.8	19/32"	15.9	3000
110568	1 5/16"	33.3	7/8"	22.2	2000
110569	1 3/8"	34.9	7/8"	22.2	1800
110570	1 7/16"	36.5	7/8"	22.2	1600
110571	1 1/2"	38.1	7/8"	22.2	1500
110572	1 9/16"	39.6	1"	25.4	1200
110573	1 3/8"	41.2	1"	25.4	1900
110574	1 11/16"	42.8	7/8"	22.2	1200
110575	1 3/4"	44.4	7/8"	22.2	1200
110576	1 7/8"	47.6	7/8"	22.2	1000
110577	2"	50.8	7/8"	22.2	1000
A2-1/8A	2 1/8"	54.0	7/8"	22.2	900
A2-1/4A	2 1/4"	57.1	1 1/4"	31.7	450
A2-3/8A	2 3/8"	60.3	7/8"	22.2	700
110578	2 1/2"	63.5	7/8"	22.2	600
AS2-9/16A	2 9/16"	65.1	3/8"	9.5	1200
A2-19/32W/RA	2 19/32"	65.4	1"	25.4	500
A2-5/8A	2 5/8"	66.4	1"	25.4	425
A2-3/4A	2 3/4"	69.2	2 3/4"	27.7	450
A3A	3"	75.7	1"	25.4	400
A3-1/8A	3 1/8"	79.4	1 3/8"	34.9	250
A3-1/4A	3 1/4"	82.6	1 7/8"	47.6	150
A3-1/2A	3 1/2"	88.9	1"	25.4	300
A3-3/4A	3 3/4"	95.0	1"	25.4	225
A4A	4"	101.3	1"	25.4	200
A4-1/8A	4 1/8"	104.5	1"	25.4	200

Soft Knurled Caps

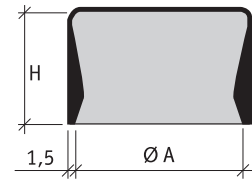
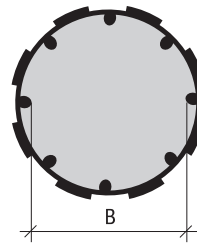
SR F-0010

TPE Blue

- Simple protection for Metric , BSP and UNF Threads
- Knurled design for finger grip to ease removal
- Temperature: Min. -60°C, Max. +135°C



Part Number	To fit thread sizes			Dimensions (mm)			Standard Pack Quantity
	Metric	BSP	UNF	A	B	H	
2280000	M8	-	3/8" - 7/16"	8.1	7.6	12.9	1000
2281000	M10-M12	1/8"	1/2" - 9/16"	11.3	9.6	12.4	1000
2282000	M14	3/4"	9/8"	13.3	12.3	12.4	1000
2283000	M16	3/8"	-	17.3	15.6	13.0	1000
2284000	M20-M22	1/2"	-	20.8	19.8	18.6	1000
2285000	M25-M26	3/4"	-	25.6	24.4	22.0	500
2285500	-	-	-	26.4	25.2	22.0	500
2286000	M32-M36	1"	1 3/8"	35.4	31.7	21.5	2000
2287000	M40	1 1/4"	1 1/2"	41.3	37.5	20.8	1500
2288000	M50	1 1/2"	-	48.5	44.3	26.4	1000
2289000	-	-	-	63.5	59.0	28.0	750



Fence Post Caps

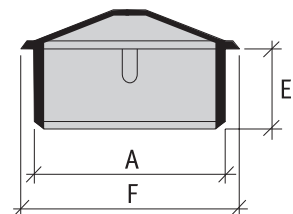
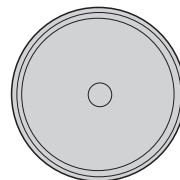
SR F-0011

HDPE White

- Push in protection cap suitable for pipes and tubes

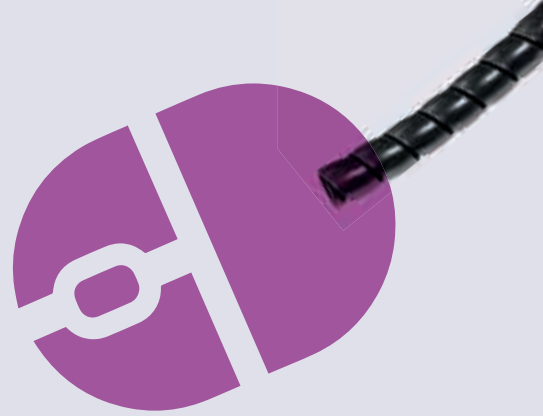


Part Number	Dimensions (mm)			Standard Pack Quantity
	A	E	F	
3584000	55.0	20.0	62.5	800
3584100	65.0	22.0	72.4	500
3584200	68.0	20.0	75.0	500
3584300	84.3	25.0	89.5	300
3584400	130.0	29.2	137.0	100



EVEN MORE CHOICE ONLINE

OVER 30,000 PRODUCTS



KD
FITTINGS



DAMPERS



DESK CABLE
TIDIES



TOGGLE
CLAMPS



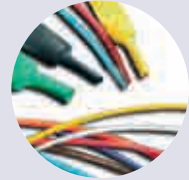
CARD GUIDE
AND PULLERS



SCAFFOLDING



LED
HARDWARE



HEAT
SHRINK



SIGN & PRINT
FIXTURES



IGUS



SECURITY
SEALS



FERRITES



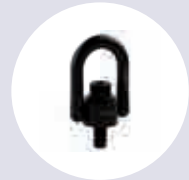
JUNCTION AND
ENCLOSURE BOXES
& SPRINGS



TAPES



FULL FLANGE
GASKETS



LIFTING
COMPONENTS



TEL: 0845 758 5070

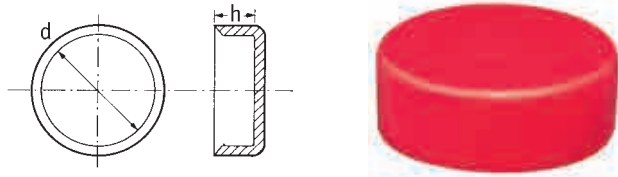
www.essentracomponents.co.uk

Tube End Caps – Short

SR 1610

Red LDPE

- General-purpose closure
- Available in a wide range of sizes



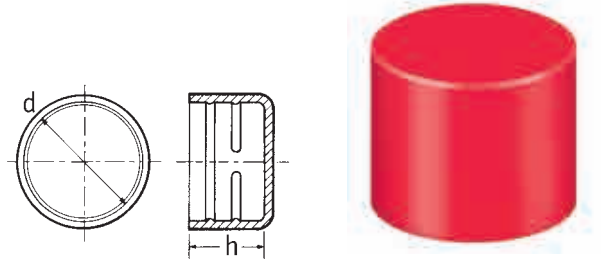
Part Number	Dimensions (mm)		Standard Pack Quantity
	d	h	
15504*	8.9	8.0	5000
11418	19.0	13.0	5000
11308	22.1	11.0	5000
10888	25.5	13.1	3000
10541	28.5	13.3	2000
10192	31.7	12.8	2000
10389	34.7	12.5	1500
10594	38.0	12.2	1500
10297	41.2	12.8	1200
10152	44.5	12.4	1200
10918	47.0	12.4	1000
11130	50.3	11.7	1000
10539	53.5	12.3	2000
10402	57.0	12.5	700
10557	59.5	12.5	600
10711	63.0	12.6	500
12891	66.4	11.0	1200
10856	69.8	12.1	1500
12310	72.5	12.6	1000
10217	75.5	12.3	1000
11095	79.4	12.7	1000
11045	82.0	12.3	800
12308	85.0	12.2	800

*Supplied in black PVC.

Ribbed Caps

SR 1046

Red LDPE



Part Number	Dimensions (mm)		Standard Pack Quantity
	d	h	
12773	10.2	16.0	10000
12774	12.0	16.0	10000
12775	15.0	20.0	5000
12776	16.0	20.0	5000
12849	18.0	20.0	2500
12777	20.0	20.0	2000
12850	22.0	20.0	2500
12779	25.0	20.0	2000
12780	28.0	26.5	1000
12846	30.0	26.5	800
12781	35.0	26.5	800
12782	38.0	26.0	500
12982	54.0	27.8	300
12960*	110.0	34.6	150

*This part supplied in yellow low-density polyethylene.

Tube End Caps – Long

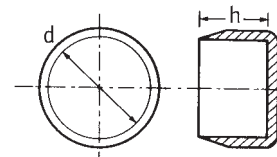
SR 1620

Red LDPE

- Extra depth and feathered edge ensure tight fit
- Design prevents accidental displacement



Part Number	Dimensions (mm)		Standard Pack Quantity
	d	h	
12549	25.0	37.0	1000
12551	31.0	39.0	2000
12532	43.0	39.5	800
12554	57.0	44.0	700
12556	70.0	47.0	400
12558	81.5	54.0	250

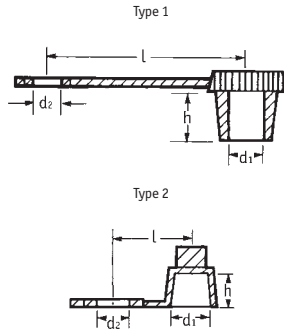


Grease Nipple Caps

SR 1019

Red LDPE

- Effective, low-cost protection for grease nipples



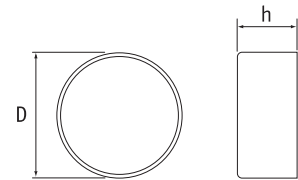
Part Number	Type	Dimensions (mm)				Standard Pack Quantity
		d1	d2	l	h	
087063000503	1	6.0	6.4	29.5	9.3	250
61454	2	6.3	6.2	11.6	5.2	10000

PVC Pipe Caps

SR 1340

Grey PVC

- Ideal for traffic signal posts
- Flexible PVC design reduces the risk of cracking, avoiding corrosion to the post
- Flexibility allows caps to be fitted easily



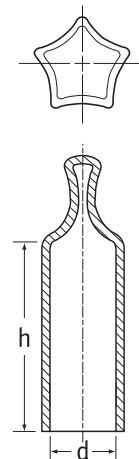
Part Number	Dimensions (mm)		Nominal Pipe Size	Standard Pack Quantity
	D	h		
462819	76.1	37.0	2½"	250
462820	88.9	37.0	3"	200
462821	114.3	42.0	4"	125
462822	139.7	44.0	5"	80
462823	168.3	34.0	6"	75

Multi-Flex Caps

SR 1072

Black Flexible PVC

- Easy fitting and removal
- Unique design fits range of diameters
- Suitable for plain or threaded applications

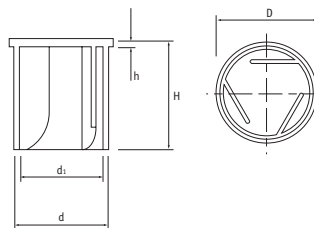


Part Number	To Fit Thread Size			Dimensions (mm)		Standard Pack Quantity
	Metric	UNF	BSP	d	h	
MFWA-090-025	M10	⅜"	⅜"	9.0-11.0	25.0	5000
MFWA-110-025	M12	7/16", ½"	¼"	11.0-13.5	25.0	2000
MFWA-135-030	M14, M16	9/16", 5/8"	-	13.5-16.5	30.0	2000
MFWA-165-040	M18	¾"	¾"	16.5-20.0	40.0	1500
MFWA-200-050	M20, M22, M24	7/8"	½", 5/8"	20.0-24.0	50.0	1500

Finned Stud Caps

SR 1056

Natural LDPE



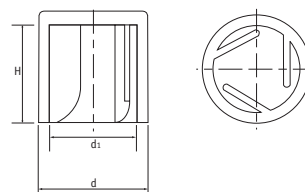
Type 1



Type 1: With Grip

Part Number	Type	Stud Size Range (mm)	Dimensions (mm)					Standard Pack Quantity
			d1	d	D	h	H	
466964	1	6.5-8.0	10.0	12.0	14.0	1.5	22.0	500
466965	1	8.0-9.0	11.0	13.0	15.0	1.5	22.0	500
466966	1	9.0-10.5	12.5	14.5	16.5	1.5	22.0	250
466967	1	11.0-13.0	16.0	18.0	20.0	1.5	22.0	250
466968	1	14.0-16.0	18.0	20.0	22.0	1.5	22.0	250
466969	1	17.0-19.0	22.0	24.0	26.0	1.5	22.0	100
466970	1	20.0-22.0	25.0	27.0	29.0	1.5	25.0	100
466971	1	24.0-26.0	29.0	31.0	33.0	1.5	30.0	100
466972	1	28.0-30.0	33.0	35.0	37.0	1.5	34.0	100
10220*	2	6.5-8.0	10.0	12.0	-	-	31.5	5000
10221	2	8.0-9.02	11.0	13.0	-	-	20.5	5000
10223	2	9.0-10.0	12.0	14.0	-	-	20.5	5000

*This size has bevelled corners.



Type 2

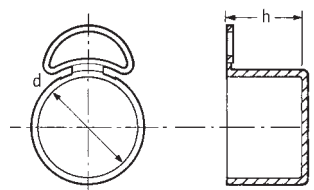


Type 2: Without Grip

Quick-Fit/Quick-Release Caps

SR 1022

- Quick fitting and removal
- Simple tear-away tab for quick release



Metric

Yellow LDPE

Part Number	Thread Size	Dimensions (mm)		Standard Pack Quantity
		h	d	
10839	M12	12.0	12.0	5000
10840	M14	14.1	14.0	5000
10080*	M16	16.5	16.0	5000
10841	M18	18.0	18.0	4000
10842	M20	20.0	20.0	2000
10224	M22	22.0	22.0	2000

BSP/Gas

Yellow LDPE

Part Number	Thread Size	Dimensions (mm)		Standard Pack Quantity
		h	d	
10351	3/4" x 19	11.0	13.0	10000
10492	3/8" x 19	12.0	16.0	5000
10308*	1/2" x 14	15.0	21.2	4000
12373*†	3/8" x 14	18.5	23.0	3000
10701	3/4" x 14	23.8	26.3	1500
12375*	7/8" x 14	25.0	29.5	1500
12376*	1" x 11	18.0	34.0	1500

*Variation in tear-away tab type. †Available with safety vent hole.

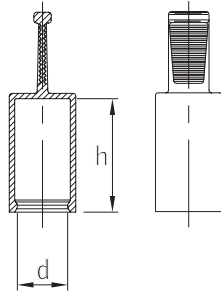
UNF/JIC
Blue LDPE

Part Number	Thread Size	Dimensions (mm)		Standard Pack Quantity
		h	d	
18390*	3/8" x 24	11.1	9.2	4000
18305	1/2" x 20	11.7	12.4	5000
18306*	9/16" x 18	12.1	14.0	5000
10348*	5/8" x 18	12.1	15.5	5000
16245*	11/16" x 16	12.1	17.1	5000
10349*	3/4" x 16	14.2	18.8	4000
16246*	13/16" x 16	14.2	20.4	4000
10702	7/8" x 14	16.5	22.0	2000
16247	1" x 14	16.5	25.0	2000
110002	11/16" x 12	19.0	26.7	2000
16248	13/16" x 12	19.0	29.8	1000
18311*	15/16" x 12	19.0	33.1	1000
16249*	17/16" x 12	19.0	36.4	1000
18405*	11 1/16" x 12	21.0	42.4	800
18406*	1 7/8" x 12	24.1	47.5	500

Pull-Tab Cap

SR 6110

Yellow EVA (Ethylene Vinyl Acetate)



- Large pull-tab allows easy removal
- Internal lip prevents ingress of dirt
- Material provides good tensile strength, toughness and increased flexibility

Part Number	Dimensions (mm)		Standard Pack Quantity
	d	h	
464885	4.0	20.2	500
464886	5.0	20.0	500
464887	6.0	20.0	500
464888	8.0	20.0	500
464889	9.0	20.0	500
464890	10.0	20.0	500
464891	11.0	20.0	500
464892	12.0	20.0	500
464893	13.0	20.0	500
464894	14.0	20.0	500
464895	15.0	20.0	500
464896	16.0	20.0	500
464897	18.0	20.0	500
464898	20.0	20.0	500
464899	20.0	30.0	500
464900	24.0	20.0	500

Tear Tab Caps

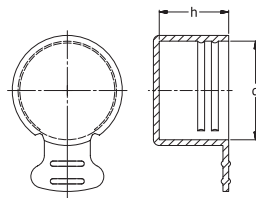
SR1033

LDPE

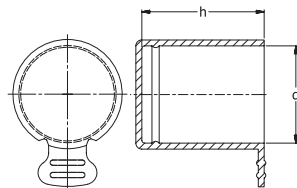
- Tear tab for easy removal
- Type 1 made to protect UNF/JIC threads from damage
- Type 2 made to protect NPT threads from damage
- The cap is versatile to offer a solution to numerous applications



Type 1



Type 2



Type 1

Part Number		UNF/JIC Thread Size	Dimensions (mm)		Standard Pack Quantity
Blue	Natural		h	d	
TS3A	TS3B	3/8"-24	11.1	9.3	13000
TS4A	TS4B	7/16"-20	11.7	11.0	11000
TS5A	TS5B	1/2" - 20	11.7	12.5	9000
TS6A	TS6B	9/16"-18	12.1	14.0	7000
TS7A	TS7B	11/16" - 16	12.1	17.2	5000
TS8A	TS8B	3/4"-16	14.2	18.8	3500
TS9A	TS9B	13/16"-16	14.2	20.4	3000
TS10A	TS10B	7/8"-14	16.5	22.2	4500
TS11A	TS11B	1"-14	16.5	25.0	4000
TS12A	TS12B	1 1/16"-12	19.1	26.8	3000
TS13A	TS13B	1 3/16"-12	19.1	29.8	2700
TS16A	TS16B	1 3/16"-12	19.1	33.1	2200
TS17A	TS17B	1 1/8"-12	19.1	36.4	200
TS20A	TS20B	1 3/8"-12	21.0	41.0	1300
TS21A	TS21B	1 11/16"-12	21.0	42.4	1200
TS24A	TS24B	1 7/8"-12	24.1	47.5	900
TS32A	TS32B	2 1/2"-12	30.5	63.7	400

Type 2

Part Number	Colour	BSP/NPT Thread	Dimensions (mm)		Standard Pack Quantity
			h	d	
Y1/8A	Blue	3/8"	8.1	9.8	5000
Y1/4A	Blue	1/4"	12.5	13.5	5000
Y3/8A	Blue	3/8"	12.5	16.9	5500
Y1/2A	Blue	1/2"	16.3	20.8	5500
Y3/4A	Blue	3/4"	16.0	26.2	4000
Y1A	Blue	1"	19.9	33.2	2000
Y1-1/4A	Blue	1 1/4"	21.3	41.7	1300
Y1-1/2A	Blue	1 1/2"	21.6	47.9	1000
Y2A	Blue	2"	22.6	59.4	600

Driveshaft Protection Caps

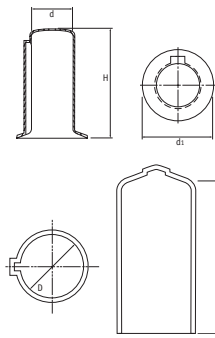
SR 1079

Type 1 - Yellow LDPE

- Fit driveshafts to DIN 748, IEC 600-72 and ISO R775
- Protection and masking of driveshaft as well as the surrounding bearings

Type 2 - Yellow Flexible PVC

- Fit driveshafts to DIN 748, IEC 600-72 and ISO R775
- Resistant to tearing, splitting, oil and most chemicals



Type 1

Type 2



Type 1 - Yellow LDPE

Part Number	To Fit Shaft Diameter d (mm)	Dimensions (mm)		Standard Pack Quantity
		d1	H	
467003	9.0	14.5	25.0	500
467004	10.0	16.0	30.0	500
467005	11.0	17.5	30.0	500
467006	14.0	22.5	35.0	500
467007	15.0	25.5	35.0	500
467008	16.0	25.5	50.0	500
467009	19.0	30.5	50.0	400
467010	20.0	32.0	60.0	250
467011	22.0	35.5	60.0	250
467012	24.0	38.5	60.0	200
467013	25.0	40.0	70.0	200
467014	28.0	45.0	70.0	150
467015	30.0	48.0	95.0	100
467016	32.0	51.0	95.0	100
467017	35.0	56.0	95.0	100
467018	38.0	61.0	95.0	100
467019	42.0	67.0	130.0	75
467020	45.0	72.0	130.0	50
467021	48.0	77.0	130.0	100
467022	55.0	88.0	130.0	100
467023	60.0	96.0	165.0	25
467024	65.0	104.0	165.0	75
467025	70.0	108.0	165.0	75
467026	75.0	112.0	165.0	75

Type 2 - Yellow Flexible PVC

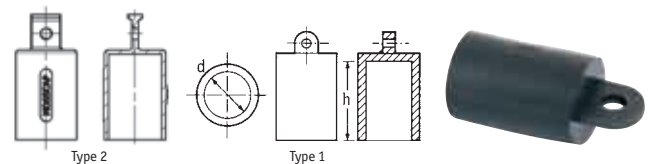
Part Number	To Fit Shaft Diameter d (mm)	Dimensions (mm)		Standard Pack Quantity
		d	H	
SPWJ-10	10.0	10.0	50.0	1500
SPWJ-11	11.0	11.0	50.0	1500
SPWJ-14	14.0	14.0	50.0	1500
SPWJ-16	16.0	16.0	60.0	1000
SPWJ-19	19.0	19.0	60.0	1000
SPWJ-20	20.0	20.0	60.0	1000
SPWJ-22	22.0	22.0	70.0	750
SPWJ-24	24.0	24.0	70.0	750
SPWJ-25	25.0	25.0	70.0	500
SPWJ-28	28.0	28.0	80.0	500
SPWJ-30	30.0	30.0	80.0	400
SPWJ-32	32.0	32.0	100.0	250
SPWJ-35	35.0	35.0	100.0	200
SPWJ-38	38.0	38.0	100.0	200
SPWJ-42	42.0	42.0	130.0	150
SPWJ-45	45.0	45.0	130.0	150
SPWJ-48	48.0	48.0	130.0	100
SPWJ-55	55.0	55.0	130.0	100
SPWJ-60	60.0	60.0	140.0	100
SPWJ-65	65.0	65.0	140.0	100
SPWJ-70	70.0	70.0	140.0	100
SPWJ-75	75.0	75.0	140.0	100

Moss Caps

SR 1020

PVC

- Highly resistant to shredding
- Excellent for threaded applications
- Green PVC can be used with oil and grease applications



Type 2

Type 1

Part Number		Type	Dimensions (mm)		Standard Pack Quantity
Black	Green		d	h	
1340240	1340241	2	4.0	24.0	10000
12696	12226	1	5.0	23.5	10000
12697	12227	2	6.0	25.0	10000
1287250	1287249	2	7.0	24.0	5000
1287253	1287252	2	8.0	24.5	8000
12700	12230	1	9.0	25.0	3500
1341980	1341979	2	10.0	29.5	2500
12702	12232	2	11.0	29.0	4500
12703	12233	1	12.0	29.0	4000
1341983	1341982	2	13.0	29.0	3500
12705	12235	1	14.0	29.0	1500
12706	12236	1	15.0	29.5	2500
12707	12237	1	16.0	28.0	2500
12708	12238	1	17.0	29.5	2000

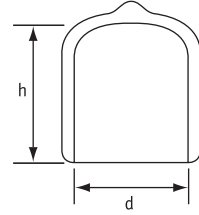
Part Number		Type	Dimensions (mm)		Standard Pack Quantity
Black	Green		d	h	
12709	12239	2	18.0	28.5	2000
1287247	1287246	2	19.0	29.5	2000
1341986	1341985	2	20.0	28.5	1600
12712	12242	1	21.0	34.5	1300
1341976	1341977	2	22.0	33.5	1200
12714	12244	2	23.0	34.5	1000
1341990	1341989	2	24.0	33.5	1000
12716	12246	2	25.0	34.5	1000
12717	12247	2	26.0	34.5	900
12718	12248	2	27.0	33.5	900
1287256	1287255	2	28.0	33.5	800
12720	12250	2	29.0	35.0	800
1287242	1287244	2	30.0	34.5	600

Flexicaps

SR 1044

Type 1: Black Flexible PVC (80 Shore)

- Flexible, durable PVC
- Suitable for a multitude of applications



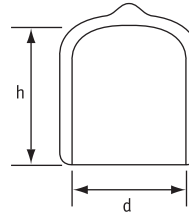
Part Number	To Fit Thread Size			Dimensions (mm)		Standard Pack Quantity
	Metric	BSP	UNF	d	h	
FCWA-0020-013	-	-	-	2.0	13.0	5000
FCWA-0028-013	M3	-	-	2.8	13.0	5000
FCWA-0032-013	-	-	-	3.2	13.0	5000
FCWA-0036-013	M4	-	-	3.6	13.0	5000
FCWA-0036-019	M4	-	-	3.6	19.0	5000
FCWA-0039-013	-	-	-	3.9	13.0	5000
FCWA-0039-019	-	-	-	3.9	19.0	5000
FCWA-0039-025	-	-	-	3.9	25.0	5000
FCWA-0044-013	M5	-	3/16"	4.4	13.0	5000
FCWA-0044-025	M5	-	3/16"	4.4	25.0	5000
FCWA-0048-013	M5	-	3/16"	4.8	13.0	5000
FCWA-0048-019	M5	-	3/16"	4.8	19.0	5000
FCWA-0048-025	M5	-	3/16"	4.8	25.0	5000
FCWA-0052-013	-	-	-	5.2	13.0	5000
FCWA-0052-019	-	-	-	5.2	19.0	5000
FCWA-0052-025	-	-	-	5.2	25.0	5000
FCWA-0055-013	-	-	-	5.5	13.0	5000
FCWA-0055-019	-	-	-	5.5	19.0	5000
FCWA-0059-013	M6	-	1/4"	5.9	13.0	5000
FCWA-0059-019	M6	-	1/4"	5.9	19.0	5000
FCWA-0059-025	M6	-	1/4"	5.9	25.0	5000
FCWA-0064-013	-	-	-	6.4	13.0	5000
FCWA-0064-025	-	-	-	6.4	25.0	5000
FCWA-0070-013	-	-	-	7.0	13.0	5000
FCWA-0070-019	-	-	-	7.0	19.0	5000
FCWA-0077-013	M8	-	5/16"	7.7	13.0	5000
FCWA-0077-019	M8	-	5/16"	7.7	19.0	5000
FCWA-0070-025	-	-	-	7.0	25.0	5000
FCWA-0077-025	M8	-	5/16"	7.7	25.0	5000
FCWA-0079-013	-	-	-	7.9	13.0	5000
FCWA-0079-019	M8	-	5/16"	7.9	19.0	5000
FCWA-0079-025	M8	-	5/16"	7.9	25.0	5000
FCWA-0083-013	-	-	-	8.3	13.0	5000
FCWA-0083-019	-	-	-	8.3	19.0	5000
FCWA-0083-025	-	-	-	8.3	25.0	5000
FCWA-0087-013	-	-	-	8.7	13.0	5000
FCWA-0087-019	-	-	-	8.7	19.0	5000
FCWA-0087-025	-	-	-	8.7	25.0	5000
FCWA-0095-013	M10	1/8"	3/8"	9.5	13.0	5000
FCWA-0095-019	M10	1/8"	3/8"	9.5	19.0	5000
FCWA-0095-025	M10	1/8"	3/8"	9.5	25.0	5000
FCWA-0103-013	-	-	-	10.3	13.0	5000
FCWA-0103-019	-	-	-	10.3	19.0	5000
FCWA-0103-025	-	-	-	10.3	25.0	5000
FCWA-0111-013	M12	-	7/16"	11.1	13.0	5000
FCWA-0111-019	M12	-	7/16"	11.1	19.0	5000
FCWA-0111-025	M12	-	7/16"	11.1	25.0	2500
FCWA-0119-013	M12	-	1/2"	11.9	13.0	5000
FCWA-0119-019	M12	-	1/2"	11.9	19.0	5000
FCWA-0119-025	M12	-	1/2"	11.9	25.0	2500
FCWA-0127-013	-	1/4"	1/2"	12.7	13.0	5000

Part Number	To Fit Thread Size			Dimensions (mm)		Standard Pack Quantity
	Metric	BSP	UNF	d	h	
FCWA-0127-019	-	1/4"	1/2"	12.7	19.0	5000
FCWA-0127-025	-	1/4"	1/2"	12.7	25.0	2500
FCWA-0135-013	M14	-	-	13.5	13.0	5000
FCWA-0135-019	M14	-	-	13.5	19.0	5000
FCWA-0135-025	M14	-	-	13.5	25.0	5000
FCWA-0138-013	M14	-	-	13.8	13.0	5000
FCWA-0138-019	M14	-	-	13.8	19.0	2500
FCWA-0138-025	M14	-	-	13.8	25.0	2500
FCWA-0143-013	M15	-	-	14.3	13.0	5000
FCWA-0143-019	M15	-	-	14.3	19.0	2500
FCWA-0143-025	M15	-	-	14.3	25.0	5000
FCWA-0152-013	-	-	-	15.2	13.0	5000
FCWA-0152-019	-	-	-	15.2	19.0	5000
FCWA-0152-025	-	-	-	15.2	25.0	5000
FCWA-0159-013	M16	3/8"	-	15.9	13.0	5000
FCWA-0159-019	M16	3/8"	-	15.9	19.0	2500
FCWA-0159-025	M16	3/8"	-	15.9	25.0	2500
FCWA-0174-013	M18	-	-	17.4	13.0	2500
FCWA-0174-019	M18	-	-	17.4	19.0	2000
FCWA-0174-025	M18	-	-	17.4	25.0	2500
FCWA-0191-013	M20	-	3/4"	19.1	13.0	2500
FCWA-0191-019	M20	-	3/4"	19.1	19.0	2500
FCWA-0191-025	M20	-	3/4"	19.1	25.0	2500
FCWA-0199-013	-	-	-	19.9	13.0	2500
FCWA-0199-019	-	-	-	19.9	19.0	2500
FCWA-0199-025	-	-	-	19.9	25.0	2500
FCWA-0206-013	-	1/2"	-	20.6	13.0	2500
FCWA-0206-025	-	1/2"	-	20.6	25.0	1250
FCWA-0206-038	-	1/2"	-	20.6	38.0	1000
FCWA-0214-013	M22	-	-	21.4	13.0	2500
FCWA-0214-025	M22	-	-	21.4	25.0	1250
FCWA-0214-038	M22	-	-	21.4	38.0	1200
FCWA-0222-013	-	5/8"	7/8"	22.2	13.0	2500
FCWA-0222-025	-	5/8"	7/8"	22.2	25.0	2500
FCWA-0222-038	-	5/8"	7/8"	22.2	38.0	1250
FCWA-0238-013	M24	-	-	23.8	13.0	2500
FCWA-0238-025	M24	-	-	23.8	25.0	1250
FCWA-0238-038	M24	-	-	23.8	38.0	1000
FCWA-0246-013	M25	-	-	24.6	13.0	2500
FCWA-0246-025	M25	-	-	24.6	25.0	1000
FCWA-0246-038	M25	-	-	24.6	38.0	1000
FCWA-0254-013	-	-	1"	25.4	13.0	2500
FCWA-0254-025	-	-	1"	25.4	25.0	1000
FCWA-0254-038	-	-	1"	25.4	38.0	1250
FCWA-0263-013	M27	3/4"	-	26.3	13.0	2500
FCWA-0263-025	M27	3/4"	-	26.3	25.0	1250
FCWA-0263-038	M27	3/4"	-	26.3	38.0	1000
FCWA-0269-013	M27	-	-	26.9	13.0	3000
FCWA-0269-025	M27	-	-	26.9	25.0	1500
FCWA-0269-038	M27	-	-	26.9	38.0	1250
FCWA-0286-025	M30	7/8"	1 1/8"	28.6	25.0	1000
FCWA-0286-038	M30	7/8"	1 1/8"	28.6	38.0	500
FCWA-0286-050	M30	7/8"	1 1/8"	28.6	50.0	500
FCWA-0302-025	-	7/8"	-	30.2	25.0	1000
FCWA-0302-038	-	7/8"	-	30.2	38.0	1000

CONTINUED ON NEXT PAGE

Flexicaps *CONTINUED*

SR 1044

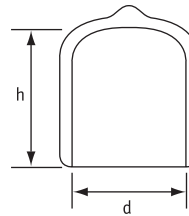


Part Number	To Fit Thread Size			Dimensions (mm)		Standard Pack Quantity
	Metric	BSP	UNF	d	h	
FCWA-0302-050	-	7/8"	-	30.2	50.0	750
FCWA-0318-025	-	1"	1 1/4"	31.8	25.0	1000
FCWA-0318-038	-	1"	1 1/4"	31.8	38.0	700
FCWA-0318-050	-	1"	1 1/4"	31.8	50.0	750
FCWA-0349-025	M35	-	1 3/8"	34.9	25.0	1000
FCWA-0349-038	M35	-	1 3/8"	34.9	38.0	650
FCWA-0349-050	M35	-	1 3/8"	34.9	50.0	500
FCWA-0381-025	M39	-	1 1/2"	38.1	25.0	1000
FCWA-0381-038	M39	-	1 1/2"	38.1	38.0	600
FCWA-0381-050	M39	-	1 1/2"	38.1	50.0	500
FCWA-0413-025	M42	1 1/4"	-	41.3	25.0	900
FCWA-0413-038	M42	1 1/4"	-	41.3	38.0	500
FCWA-0413-050	M42	1 1/4"	-	41.3	50.0	400
FCWA-0445-025	M45	1 3/8"	-	44.5	25.0	500
FCWA-0445-038	M45	1 3/8"	-	44.5	38.0	500
FCWA-0445-050	M45	1 3/8"	-	44.5	50.0	400
FCWA-0476-025	M48	1 1/2"	-	47.6	25.0	625
FCWA-0476-038	M48	1 1/2"	-	47.6	38.0	400

Part Number	To Fit Thread Size			Dimensions (mm)		Standard Pack Quantity
	Metric	BSP	UNF	d	h	
FCWA-0476-050	-	1 1/2"	-	47.6	50.0	350
FCWA-0508-025	-	-	2"	50.8	25.0	550
FCWA-0508-038	-	-	2"	50.8	38.0	400
FCWA-0508-050	-	-	2"	50.8	50.0	200
FCWA-0539-038	-	1 3/4"	-	53.9	38.0	400
FCWA-0539-050	-	1 3/4"	-	53.9	50.0	200
FCWA-0572-038	M58	2 1/4"	-	57.2	38.0	250
FCWA-0572-050	M58	2 1/4"	-	57.2	50.0	200
FCWA-0603-038	-	2 3/8"	-	60.3	38.0	250
FCWA-0603-050	-	2 3/8"	-	60.3	50.0	250
FCWA-0635-038	-	2 1/2"	-	63.5	38.0	250
FCWA-0635-050	-	2 1/2"	-	63.5	50.0	125
FCWA-0660-038	-	2 1/4"	-	66.0	38.0	200
FCWA-0660-025	-	2 1/4"	-	66.0	25.0	200
FCWA-0698-038	-	-	-	69.8	38.0	250
FCWA-0698-050	-	-	-	69.8	50.0	200
FCWA-0762-038	-	3"	-	87.884	38.0	200
FCWA-0762-050	-	3"	-	76.2	50.0	150

Type 2: Red Flexible PVC (60 Shore)

- Softer, more flexible PVC allows easy fitting
- Bright red gives high visibility, reducing health and safety risks



Part Number	To Fit Thread Size			Dimensions (mm)		Standard Pack Quantity
	Metric	BSP	UNF	d	h	
FCZF-0077-013	M8	-	5/16"	7.7	13.0	5000
FCZF-0079-013	-	-	-	7.9	13.0	5000
FCZF-0087-013	-	-	-	8.7	13.0	5000
FCZF-0095-013	-	-	-	9.5	13.0	5000
FCZF-0103-013	-	-	-	10.3	13.0	5000
FCZF-0111-013	M12	-	7/16"	11.1	13.0	5000
FCZF-0119-013	M12	-	1/2"	11.9	13.0	5000
FCZF-0127-013	M14	3/4"	1/2"	12.7	13.0	5000
FCZF-0138-013	M14	-	-	13.8	13.0	5000
FCZF-0143-013	M15	-	-	14.3	13.0	5000
FCZF-0152-013	-	-	-	15.2	13.0	5000
FCZF-0159-013	M16	3/8"	-	15.9	13.0	5000
FCZF-0174-013	M18	-	-	17.4	13.0	2500
FCZF-0191-025	M20	-	3/4"	19.1	25.0	2500
FCZF-0206-025	-	1/2"	-	20.6	25.0	1250
FCZF-0214-025	M22	-	-	21.4	25.0	1250
FCZF-0222-025	-	5/8"	7/8"	22.2	25.0	1250

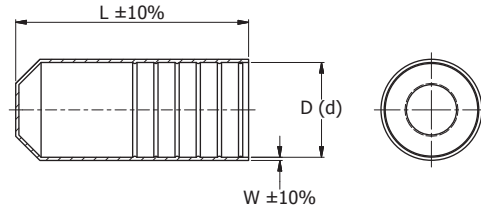
Part Number	To Fit Thread Size			Dimensions (mm)		Standard Pack Quantity
	Metric	BSP	UNF	d	h	
FCZF-0238-025	M24	-	-	23.8	25.0	1250
FCZF-0246-025	M25	-	-	24.6	25.0	1000
FCZF-0254-025	-	-	1"	25.4	25.0	1000
FCZF-0263-025	M27	3/4"	-	26.3	25.0	1250
FCZF-0286-025	M30	7/8"	1 1/8"	28.6	25.0	1000
FCZF-0302-025	-	7/8"	-	30.2	25.0	1000
FCZF-0318-025	-	1"	1 1/4"	31.8	25.0	1000
FCZF-0349-025	M35	-	1 3/8"	34.9	25.0	1000
FCZF-0381-025	M39	-	1 1/2"	38.1	25.0	1000
FCZF-0413-025	M42	1 1/4"	-	41.3	25.0	900
FCZF-0445-025	M45	1 3/8"	-	44.5	25.0	500
FCZF-0476-038	M48	1 1/2"	-	47.6	38.0	400
FCZF-0508-038	-	-	2"	50.8	38.0	400
FCZF-0539-038	M-	1 3/4"	-	53.9	38.0	400
FCZF-0572-038	M58	-	-	57.2	38.0	250
FCZF-0603-038	-	2 3/8"	-	60.3	38.0	250
FCZF-0635-038	-	2 1/2"	-	63.5	38.0	250
FCZF-0698-050	-	-	-	69.8	50.0	200

Heat Shrink End Cap

SR1180

Polyolefin

- Excellent sealing properties
- UV and weather resistance
- Operating temperature: -55°C to +110°C
- Min. full recovery temp: +120°C
- Internal coating with adhesive lining



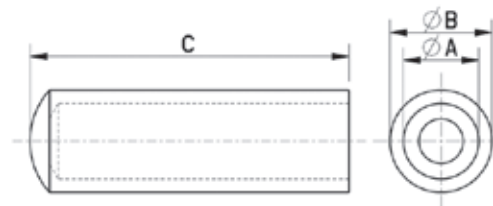
Part Number	Dimensions (mm)				Standard Pack Quantity
	As supplied	After Recovered			
	D (Min.)	d (Max.)	L	w	
498776	12.0	4.0	40.0	2.6	100
498777	14.0	5.0	45.0	2.2	100
498788	200.0	90.0	160.0	4.2	6
498778	20.0	6.0	55.0	2.8	50
498779	25.0	8.5	68.0	2.8	50
498780	35.0	16.0	83.0	3.3	50
498789	14.0	5.0	55.0	2.2	20
498790	42.0	15.0	110.0	3.3	20
498791	55.0	23.0	140.0	3.8	6
498782	55.0	26.0	103.0	3.5	10
498792	62.0	23.0	140.0	3.8	6
498783	75.0	36.0	120.0	4.0	10
498793	75.0	32.0	150.0	4.0	10
498794	75.0	36.0	170.0	4.2	10
498795	105.0	45.0	150.0	4.0	10
498784	100.0	52.0	140.0	4.0	1
498785	120.0	60.0	150.0	4.0	1
498786	145.0	60.0	150.0	4.0	1
498787	160.0	82.0	150.0	4.0	9

Protection Cover

SR5763

LDPE - Natural

- Very good protection of screw threads, smooth axles, rod ends, etc



Part Number	Dimensions (mm)			Standard Pack Quantity
	A	B	C	
118042300003	4.0	6.0	23.0	500
118051500003	4.7	7.0	15.0	500
118052400003	5.0	7.0	24.0	500
118062500003	6.0	8.0	25.0	500
118072500003	7.0	9.0	25.0	250
118082500003	8.0	10.0	25.0	250
118102500003	10.0	12.0	25.0	250
118032200003	3.5	5.0	23.0	250

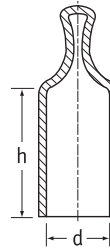
Pull-Tab Flexicaps

SR 1066

Type 1: Black Flexible PVC (80 Shore)

Type 2: Red Flexible PVC (60 Shore)

- Ideal for general-protection purposes
- Pull-tab for easy removal



Type 1



Type 2

Type 1

Part Number	To Fit Thread Size			Dimensions (mm)		Standard Pack Quantity
	Metric	BSP	UNF	d	h	
PCWA-0036-013	M4	-	-	3.6	13.0	5000
PCWA-0048-013	M4	-	-	4.8	13.0	5000
PCWA-0053-013	M6	-	7/32"	5.3	13.0	5000
PCWA-0061-013	-	-	1/4"	6.1	13.0	5000
PCWA-0075-013	-	-	-	7.5	13.0	5000
PCWA-0075-025	-	-	-	7.5	25.0	5000
PCWA-0077-013	M8	-	5/16"	7.7	13.0	7500
PCWA-0077-025	-	-	-	7.7	25.0	5000
PCWA-0087-013	-	-	-	8.7	13.0	1500
PCWA-0093-013	M10	1/8"	3/8"	9.3	13.0	5000
PCWA-0093-025	-	-	-	9.3	25.0	2500
PCWA-0097-013	-	-	-	9.7	13.0	2500
PCWA-0097-025	-	-	-	9.7	25.0	2500
PCWA-0108-013	-	-	7/16"	10.8	13.0	5000
PCWA-0108-025	-	-	-	10.8	25.0	5000
PCWA-0111-013	-	-	-	11.1	13.0	5000
PCWA-0111-025	-	-	-	11.1	25.0	2500
PCWA-0119-013	M12	-	1/2"	11.9	13.0	5000
PCWA-0119-025	-	-	-	11.9	25.0	3000
PCWA-0124-025	-	1/4"	1/2"	12.4	25.0	2500
PCWA-0124-013	-	1/4"	1/2"	12.4	13.0	5000
PCWA-0132-013	M14	-	7/32"	13.2	13.0	5000
PCWA-0132-025	-	-	-	13.2	25.0	2500
PCWA-0143-025	M15	-	9/16"	14.3	25.0	2500
PCWA-0153-013	M16	-	-	15.3	13.0	2500
PCWA-0153-025	-	-	-	15.3	25.0	2000
PCWA-0159-025	-	3/8"	5/8"	15.9	25.0	2000
PCWA-0163-013	M18	-	13/16"	16.3	13.0	2500
PCWA-0163-025	-	-	-	16.3	25.0	1250
PCWA-0174-013	M18	-	-	17.4	13.0	1500
PCWA-0174-025	M18	-	-	17.4	25.0	1500
PCWA-0188-013	M20	-	3/4"	18.8	13.0	2500
PCWA-0188-025	-	-	-	18.8	25.0	1250
PCWA-0200-013	-	-	-	20.0	13.0	2500
PCWA-0200-025	-	-	-	20.0	25.0	2500
PCWA-0206-013	M22	1/2"	13/32"	20.6	13.0	2500
PCWA-0206-025	-	-	-	20.6	25.0	1000
PCWA-0220-025	-	5/8"	7/8"	22.0	25.0	1000
PCWA-0238-025	-	-	-	23.8	25.0	1500
PCWA-0246-013	M25	-	-	24.6	13.0	1000
PCWA-0246-025	M25	-	-	24.6	25.0	1000
PCWA-0251-025	M26	-	1"	25.1	25.0	1500
PCWA-0269-025	-	-	-	26.9	25.0	1000
PCWA-0286-025	M30	7/8"	1 1/8"	28.6	25.0	600
PCWA-0286-038	M30	7/8"	1 1/8"	28.6	38.0	600
PCWA-0312-038	M32	1"	1 1/4"	31.2	38.0	350
PCWA-0349-025	M35	-	1 3/8"	34.9	25.0	350
PCWA-0349-038	M35	-	1 3/8"	34.9	38.0	350
PCWA-0381-038	M39	-	1 1/2"	38.1	38.0	350
PCWA-0381-050	M39	-	1 1/2"	38.1	50.0	350
PCWA-0408-038	-	-	1 5/8"	40.8	38.0	350
PCWA-0445-038	M45	1 3/8"	-	44.5	38.0	350
PCWA-0445-050	M45	1 3/8"	-	44.5	50.0	350
PCWA-0508-050	-	-	2"	50.8	50.0	200

Type 2

Part Number	To Fit Thread Size			Dimensions (mm)		Standard Pack Quantity
	Metric	BSP	UNF	d	h	
PCZF-0075-013	-	-	-	7.5	13.0	5000
PCZF-0075-025	M8	-	-	7.5	25.0	5000
PCZF-0077-013	-	-	5/16"	7.7	13.0	7500
PCZF-0077-025	-	-	-	7.7	25.0	5000
PCZF-0087-013	-	-	-	8.7	13.0	1500
PCZF-0087-025	M10	-	-	8.7	13.0	1500
PCZF-0093-013	-	1/8"	3/8"	9.3	13.0	5000
PCZF-0097-013	-	-	-	9.7	13.0	2500
PCZF-0097-025	-	-	-	9.7	25.0	2500
PCZF-0108-013	-	-	7/16"	10.8	13.0	5000
PCZF-0108-025	-	-	-	10.8	25.0	5000
PCZF-0111-013	-	-	-	11.1	13.0	5000
PCZF-0111-025	M12	-	-	11.1	25.0	2500
PCZF-0119-013	-	-	1/2"	11.9	13.0	5000
PCZF-0119-025	-	-	-	11.9	25.0	3000
PCZF-0124-025	M14	1/4"	1/2"	12.4	25.0	2500
PCZF-0132-025	M15	-	9/16"	13.2	25.0	2500
PCZF-0143-025	M16	-	-	14.3	25.0	2500
PCZF-0153-025	-	-	-	15.3	25.0	2000
PCZF-0159-025	M18	-	5/8"	15.9	25.0	2000
PCZF-0174-013	M18	-	-	17.4	13.0	1500
PCZF-0174-025	M20	-	-	17.4	25.0	1500
PCZF-0188-013	-	-	3/4"	18.8	13.0	2500
PCZF-0188-025	-	-	-	18.8	25.0	1250
PCZF-0200-013	-	-	-	20.0	13.0	2500
PCZF-0200-025	M22	-	-	20.0	25.0	2500
PCZF-0206-013	-	1/2"	13/16"	20.6	13.0	2500
PCZF-0206-025	-	-	-	20.6	25.0	2000
PCZF-0220-025	-	5/8"	7/8"	22.0	25.0	1000
PCZF-0238-025	M25	-	-	23.8	25.0	1500
PCZF-0251-025	-	-	1"	25.1	25.0	1500
PCZF-0269-025	M30	-	-	26.9	25.0	1000
PCZF-0286-038	M32	7/8"	1 1/8"	28.6	38.0	1000
PCZF-0312-038	M35	1"	1 1/4"	31.2	38.0	350
PCZF-0349-025	M35	-	1 3/8"	34.9	25.0	350
PCZF-0349-038	M39	-	1 3/8"	34.9	38.0	350
PCZF-0381-038	M39	-	1 1/2"	38.1	38.0	350
PCZF-0413-038	M42	1 1/4"	-	41.3	38.0	350

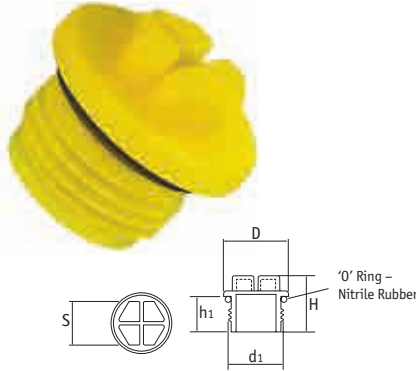
THREADED PLUGS

O-Ring Threaded Plugs

SR 1125

Yellow HDPE

- Can be applied or removed by spanner, screwdriver or socket; manually or with power tool



Metric Thread

Part Number	Thread Size (d ₁)	Dimensions (mm)				Standard Pack Quantity
		D	H	h ₁	S	
498659	M8 x 1	12.5	17.0	10.0	6.0	500
498660	M10 x 1	14.5	17.2	10.0	7.0	500
498661	M12 x 1	17.0	17.2	10.0	10.0	500
498662	M10 x 1.5	14.5	19.2	12.0	7.0	500
498663	M12 x 1.5	17.0	19.2	12.0	10.0	500
498664	M14 x 1.5	22.0	19.2	12.0	10.0	500
498540	M16 x 1.5	24.0	20.4	12.0	13.0	500
498541	M18 x 1.5	24.0	20.4	12.0	13.0	500
498542	M20 x 1.5	26.0	20.4	12.0	15.0	250
498665	M22 x 1.5	28.0	20.4	12.0	15.0	250
498543	M24 x 1.5	30.0	20.4	12.0	17.0	250
498544	M26 x 1.5	32.0	20.4	12.0	19.0	250
498546	M30 x 1.5	38.0	20.6	12.0	22.0	250
498547	M32 x 1.5	40.0	20.6	12.0	24.0	250
498666	M36 x 1.5	45.0	20.6	12.0	24.0	100
498667	M38 x 1.5	48.0	20.6	12.0	24.0	100
498668	M27 x 2.0	33.0	24.6	15.0	19.0	250
498548	M30 x 2.0	38.0	24.6	15.0	22.0	250
498549	M33 x 2.0	40.0	24.6	15.0	24.0	250
498550	M36 x 2.0	45.0	24.6	15.0	24.0	100
498669	M42 x 2.0	50.0	24.6	15.0	24.0	100
498551	M45 x 2.0	52.0	25.0	15.0	30.0	100
498670	M48 x 2.0	55.0	25.0	15.0	30.0	100
498671	M52 x 2.0	60.0	25.0	15.0	30.0	100

UNF Thread

Part Number	Thread Size (d ₁)	Dimensions (mm)				Standard Pack Quantity
		D	H	h ₁	S	
498672	3/8" x 24	14.0	17.2	10.0	7.0	500
498673	7/16" x 20	16.0	19.7	12.5	10.0	500
498674	1/2" x 20	19.0	20.9	12.5	10.0	500
498675	9/16" x 18	21.0	20.9	12.5	10.0	500
498552	5/8" x 18	22.0	20.9	12.5	13.0	500
498676	3/4" x 16	27.0	21.9	13.5	13.0	500
498677	7/8" x 14	28.0	21.9	13.5	15.0	250
498553	1" x 14	31.0	22.1	13.5	17.0	250
498554	1 1/16" x 12	35.0	22.6	14.0	19.0	250
498678	1 3/16" x 12	38.0	22.6	14.0	22.0	250
498555	1 5/16" x 12	42.0	24.0	14.0	24.0	250
498679	1 7/8" x 12	50.0	24.0	14.0	24.0	100
498680	1 7/8" x 12	55.0	24.0	14.0	30.0	100

BSP Thread

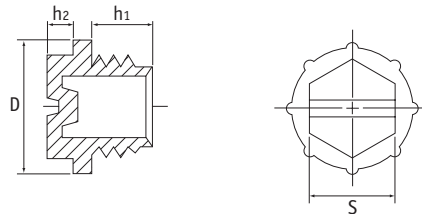
Part Number	Thread Size (d ₁)	Dimensions (mm)				Standard Pack Quantity
		D	H	h ₁	S	
498681	1/8" x 28	16.0	17.2	10.0	7.0	500
498682	1/4" x 19	19.0	19.7	12.5	10.0	500
498683	3/8" x 19	22.0	20.9	12.5	13.0	500
498556	1/2" x 14	27.0	21.9	13.5	15.0	500
498557	5/8" x 14	29.5	21.9	13.5	17.0	500
498558	3/4" x 14	32.0	21.9	13.5	19.0	250
498559	7/8" x 14	37.0	21.9	13.5	22.0	250
498684	1" x 11	40.0	23.6	15.0	24.0	250
498685	1 1/4" x 11	50.0	23.6	15.0	24.0	250
498686	1 1/2" x 11	56.0	25.0	15.0	30.0	100
498687	1 3/4" x 11	62.0	25.0	15.0	36.0	100
498688	2" x 11	68.0	25.0	15.0	36.0	100

Open Slottex Plugs

SR 1117

Blue HDPE

- Can be applied or removed by spanner, screwdriver or socket; manually or with power tool



Part Number	Fit UNF Thread Size	Dimensions (mm)				Standard Pack Quantity
		D	h ₁	h ₂	S	
B-3	7/16"-20	15.8	7.6	4.6	10.9	11000
B-4	1/2"-20	17.3	9.1	4.6	12.7	7500
B-5	9/16"-18	19.1	9.7	4.6	12.7	6000
B-6	5/8"-18	20.6	8.9	4.6	14.2	5000
B-7	3/4"-16	23.9	11.2	4.8	17.3	3500
B-8	7/8"-14	26.9	12.7	6.1	19.1	2100
B-9	1"-14	30.0	10.9	6.4	19.1	2000
B-10	1 1/16"-14	33.3	16.4	6.4	22.1	1200

UNF Standard Threaded Plugs

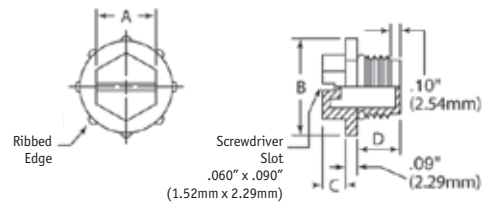
SR5762

Polypropylene - Yellow/Black*

- Can be applied or removed by hand, hex wrench or screwdriver
- Optional O-ring gives this part a water tight seal for superior leakage protection



Part Number	Part Number w/O-ring	To Fit Thread Size	Dimensions (mm)				Standard Pack Quantity
			A	B	C	D	
BL3A	BL3L	3/16" x 20	10.9	15.8	4.57	9.91	5000
BL4A*	BL4B*	1/2" x 13	12.7	17.5	7.14	10.41	3000
BL5A	BL5K	5/16" x 18	12.7	19.1	4.57	10.67	3000
BL7A	BL7J	3/4" x 16	17.3	23.9	4.83	13.21	1500
BL8A	BL8H	7/8" x 14	19.1	26.9	6.1	14.22	2100
BL10A	BL10I	1 1/16" x 12	22.1	33.3	6.35	16.76	600
BL11A	BL11D	1 3/16" x 12	25.4	38.1	7.62	17.78	850
BL12A	BL12H	1 3/8" x 12	27.18	40.89	7.37	17.78	700
BL13A	BL13D	1 5/8" x 12	28.58	42.75	7.62	19.56	500
BL14A	BL14C	1 7/8" x 12	38.1	53.98	7.62	19.05	700



Threaded Protection Plug with Gasket

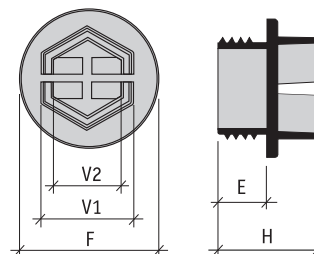
SR F-0012

Plug: PA, Seal: TPE

- Heat resistant protection plug with washer seal
- Suitable for BSP thread
- Can be assembled using straight screwdriver, hex key or wrench
- Temperature: Min. -30°C, Max. +90°C



Part Number	Thread BSP GAS	Dimensions (mm)					Standard Pack Quantity
		H	E	F	NV (V1)	HEX (V2)	
8610000	3/8"	16.0	8.0	16.0	12.0	8.0	1000
8611000	1/4"	18.0	8.0	21.0	16.0	12.0	1000
8612000	3/16"	18.0	8.0	24.0	16.0	12.0	1000
8613000	1/2"	20.0	10.0	28.0	18.0	14.0	500
8614000	3/4"	20.0	10.0	35.0	18.0	14.0	500
8615000	1"	20.0	10.0	44.0	20.0	16.0	250
8616000	1 1/4"	26.0	14.0	52.0	32.0	27.0	100

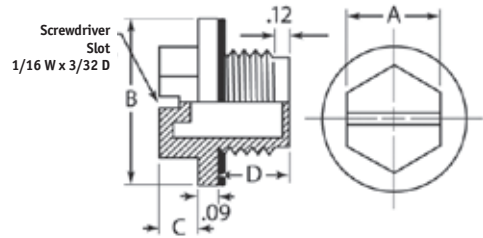


UNF Standard Threaded Wide Flange Plug

SR5761

PA and Nitrile

- The wide flange design keeps any paint flakes away from the hole when removed
- The PA material absorbs paint keeping flakes away from the hole when removed to a minimum
- The nitrile gasket seals the plug to the mating surface for watertight seal
- Can be applied or removed by hand, screwdriver or with a torque wrench
- Nylon is recommended for intermittent temperatures from -40°C to +100°C



Part Number	To Fit Thread Size	Dimensions (mm)				Standard Pack Quantity
		A	B	C	D	
BLWF100A	3/16" x 20	12.7	19.6	4.5	9.9	5000
BLWF105A	1/8" x 20	12.7	21.6	4.5	10.2	5000
BLWF110A	9/16" x 18	12.7	23.2	4.5	10.6	2500
BLWF115A	3/4" x 16	19.0	28.7	4.8	13.2	2500
BLWF120A	7/8" x 14	19.0	32.6	6.1	14.2	2500
BLWF125A	1 1/16" x 12	25.4	40.0	6.3	16.7	1000
BLWF130A	1 3/16" x 12	25.4	43.7	7.6	17.7	1000
BLWF135A	1 1/8" x 12	25.4	47.4	7.3	17.7	1000
BLWF140A	1 1/2" x 12	28.5	56.3	7.6	19.5	500
BLWF145A	1 7/8" x 12	38.1	63.6	7.6	19.0	500

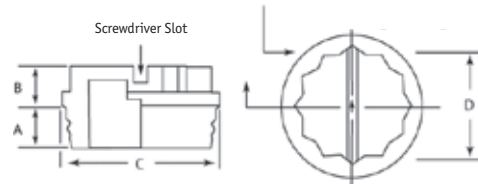
UNF Standard Threaded Molded O-Ring Plug

SR5760

HDPE

- Often used on flat-faced hydraulic fittings
- Integral sealing type bead prevents oil leakage or entrance of contaminants
- The flange lip compresses against the surface to keep contaminants out
- Can be applied or removed by hand, wrench, socket or screwdriver

12 Point Head For Socket or Wrench Tightening



Part Number	To Fit Thread Size	Dimensions (mm)				Standard Pack Quantity
		A	B	C	D*	
BLM3B	3/16" x 20	8.7	7.1	16.76	3/16"	8000
BLM3-24B	3/16" x 24	8.7	7.1	16.76	3/16"	8000
BLM4B	1/2" x 20	8.7	8.0	18.54	7/16"	6000
BLM5B	9/16" x 18	8.9	8.2	20.32	1/2"	6000
BLM6B	5/8" x 18	9.5	8.0	20.83	9/16"	5000
BLM7B	3/4" x 16	10.3	10.3	25.91	1 1/16"	3000

D* 12-Point Head Size - Measurements in inches

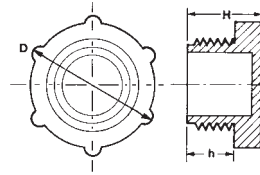
Part Number	To Fit Thread Size	Dimensions (mm)				Standard Pack Quantity
		A	B	C	D*	
BLM8B	7/8" x 14	11.9	7.9	29.4	13/16"	2000
BLM9B	1" x 14	12.7	7.9	31.7	7/8"	1500
BLM10B	1 1/16" x 12	15.0	7.9	36.8	1"	1000
BLM11B	1 3/16" x 12	15.0	8.7	38.1	1 1/16"	1000
BLM12B	1 1/2" x 12	15.0	8.7	44.2	1 3/4"	1000
BLM13B	1 7/8" x 12	15.0	8.7	54.7	1 1/2"	700
BLM14B	1 7/8" x 12	15.0	8.7	55.5	1 5/8"	700

Threaded Protection Plugs

SR 1002

Red LDPE

- Easy-to-grip head
- Thread ensures secure fit
- Excellent protection from dirt, moisture and corrosion
- Widely used in hydraulic, pneumatic and general engineering industries



Metric

Part Number	Thread Size	Dimensions (mm)			Standard Pack Quantity
		D	h	H	
12011	M8 x 1	12.3	9.5	14.3	5000
12012	M10 x 1	15.3	10.4	14.6	5000
12013	M12 x 1	18.5	10.7	16.7	5000
12017*	M12 x 1.5	16.7	8.7	16.3	2500
12018*	M14 x 1.5	18.5	9.5	17.2	5000
12019	M16 x 1.5	22.0	12.5	17.2	3000
10458	M18 x 1.5	23.5	13.5	18.3	4000
12020	M20 x 1.5	26.3	14.0	18.2	3000
10128	M22 x 1.5	28.2	13.7	18.3	3000
12021	M24 x 1.5	31.3	13.8	18.5	2000
12022	M25 x 1.5	31.3	14.0	18.5	2500
12023	M26 x 1.5	32.7	13.8	18.7	2000
12030	M52 x 1.5	63.7	15.5	21.5	500

*Hexagonal head

UNF/JIC

Part Number	Thread Size	Dimensions (mm)			Standard Pack Quantity
		D	h	H	
10498	5/16" x 18	14.5	7.4	12.0	5000
10709	5/16" x 24	14.8	7.4	12.3	5000
10692	3/8" x 24	13.7	9.5	14.0	5000
10763	7/16" x 20	17.4	11.0	16.1	5000
12031	7/16" x 24	17.8	7.1	12.1	5000
10696	1/2" x 20	18.5	10.5	15.3	5000
10668	5/16" x 18	22.6	10.7	15.4	5000
12033	5/16" x 24	18.9	9.0	13.6	5000
10940	5/8" x 18	21.0	10.0	14.8	5000
12965	5/8" x 24	20.7	10.0	14.8	5000
12786	1 1/16" x 16	25.6	13.5	18.1	3000
10575	3/4" x 16	27.0	13.8	18.7	3000
12827	1 3/16" x 16	26.7	13.5	18.1	2500
10326	7/8" x 14	28.8	13.6	18.5	2500
12785	1" x 14	32.0	13.2	17.8	2000
10460	1 1/16" x 12	33.4	13.8	18.4	2000
12359	1 1/16" x 14	33.3	13.7	18.3	2000
11506	1 3/16" x 12	36.8	13.5	18.3	1500
10671	1 3/16" x 12	39.3	11.0	16.3	1500
11752	1 5/8" x 12	50.6	12.9	17.3	800
11755	1 7/8" x 12	58.4	16.7	22.5	400
12040	2 1/2" x 12	73.6	15.0	20.6	300

BSP/Gas

Part Number	Thread Size	Dimensions (mm)			Standard Pack Quantity
		D	h	H	
10651	1/8" x 28	16.4	4.2	10.5	5000
10588	1/4" x 19	18.8	6.5	12.8	5000
10996	3/8" x 19	22.9	5.5	12.0	5000
10590	1/2" x 14	28.0	10.3	17.3	3000
10511	5/8" x 14	31.3	13.9	18.4	2500
10731	3/4" x 14	32.3	11.0	17.0	2000
11429	7/8" x 14	38.0	13.5	18.1	1500
10810	1" x 11	39.8	10.8	16.9	1500
10459	1 1/4" x 11	49.9	15.0	20.9	800
11242	1 1/2" x 11	55.2	10.8	16.9	600
10496	2" x 11	73.7	10.7	17.5	400
10319	3" x 11	105.0	11.3	16.5	150

Metric

Part Number	Thread Size	Dimensions (mm)			Standard Pack Quantity
		D	h	H	
12605	M14 x 1.5	21.5	8.0	12.5	5000
12606	M16 x 1.5	23.6	8.0	12.0	3000
18408	M20 x 1.5	29.5	8.0	13.0	3000
12597	M30 x 2.0	39.9	9.8	14.6	1500
12611	M36 x 2.0	45.6	10.5	21.5	1000
12578	M42 x 2.0	64.7	15.5	21.2	700
12602	M45 x 2.0	57.8	12.7	18.5	700
12612	M52 x 2.0	65.9	15.4	21.3	500

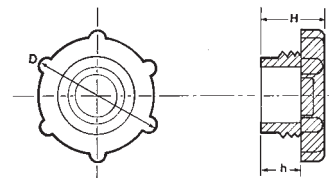
BSP/Gas

Part Number	Thread Size	Dimensions (mm)			Standard Pack Quantity
		D	h	H	
10101	1/4" x 19	20.5	6.0	9.2	5000
10102	3/8" x 19	24.1	6.2	9.6	5000
10103	1/2" x 14	30.4	6.1	9.2	3000
10105	5/8" x 14	30.2	6.0	9.2	2500
10106	3/4" x 14	34.0	6.1	9.1	2000
12613	3/4" x 14	33.2	6.8	12.5	2000
10107	1" x 11	40.2	5.7	9.0	1500
12614	1 1/4" x 11	49.5	12.9	18.7	800

Quick-Fit Threaded Plugs

SR 1009

Red LDPE



UNF/JIC

Part Number	Thread Size	Dimensions (mm)			Standard Pack Quantity
		D	h	H	
10108	1/16" x 20	18.5	5.9	9.0	5000
10109	1/2" x 20	20.6	5.9	9.1	5000
10110	9/16" x 18	21.4	5.9	9.0	5000
10119	3/4" x 16	26.7	5.9	9.3	3000
10120	7/8" x 14	29.8	6.2	9.2	2500
11000	1 1/16" x 12	33.9	5.9	9.0	2000
11001	1 5/16" x 12	40.3	6.0	9.4	1500

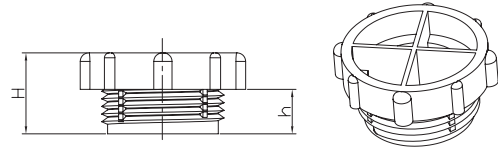
THREADED PLUGS

Anti-Vibration Plug

SR 6112

Transparent LDPE

- Ideal for BSP hydraulic fittings
- Notched thread design prevents part coming loose due to vibration
- Transparent colour allows easy inspection of o-ring
- Plug keeps fitting tight against tube collar



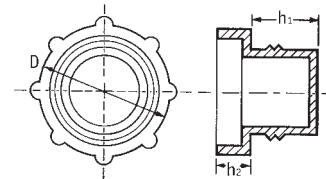
Part Number	To Fit Thread BSP	Dimensions (mm)		Standard Pack Quantity
		H	h	
110826	¼" x 19	11.0	5.0	500
110827	⅜" x 19	12.8	6.8	500
110829	½" x 14	13.3	7.3	500
110828	⅝" x 14	16.5	10.5	500
110830	¾" x 14	15.6	9.6	500

BSP Threaded Plugs

SR 1054

Red LDPE

- Fits popular BSP sizes
- Very quick fitting and removal
- Ideal for hydraulic couplings



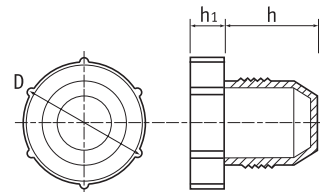
Part Number	To Fit Thread Size	Dimensions (mm)			Standard Pack Quantity
		d	h1	h2	
10097	¼" x 19	17.0	4.5	6.0	5000
10098	⅜" x 19	21.0	6.3	6.0	5000
10099	½" x 14	27.0	6.8	6.0	3000
10548	⅝" x 14	28.0	9.6	6.0	2500

Threaded Fitting Plugs

SR 1077

Red LDPE

- Knurled head for easy application
- Ideal for sealing 37° flare fittings



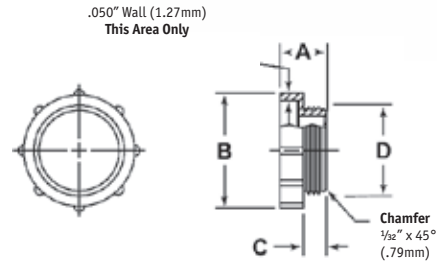
Part Number	UNF/JIC Thread Size	Dimensions (mm)			Standard Pack Quantity
		D	h	h1	
110228	⅝" x 24	13.9	10.7	6.3	12000
110177	⅜" x 24	15.3	11.9	6.4	8500
110178	⅝" x 20	17.2	14.1	6.4	6500
110179	½" x 20	17.2	13.7	6.3	6500
110180	⅝" x 18	20.4	12.6	6.4	4500
110181	⅝" x 18	20.8	14.5	6.4	4500
110182	¾" x 16	24.1	18.6	6.5	2200
110183	⅞" x 14	27.0	21.1	6.5	1800
110184	1½" x 12	34.7	21.8	6.5	1200
110185	1⅞" x 14	34.0	24.6	6.4	1000
110186	1⅞" x 12	40.9	23.5	6.3	1400

NPT Threaded Plug

SR 5759

High Density Polyethylene - Red

- Knurled head design allows the user to install or remove these by hand easier
- Used to protect NPT thread against contaminants and moisture



Part Number	To Fit Thread Size	Dimensions (mm)				Standard Pack Quantity
		A	B	C	D	
PT1/4A	1/4"	12.7	18.4	5.7	11.2	9000
PT3/8A	3/8"	12.7	22.9	5.7	14.9	6500
PT1/2A	1/2"	12.7	28.5	6.4	17.8	4000
PT3/4C	3/4"	12.7	33.0	6.4	23.9	3000
PT1A	1"	12.7	39.8	6.4	30.0	1800

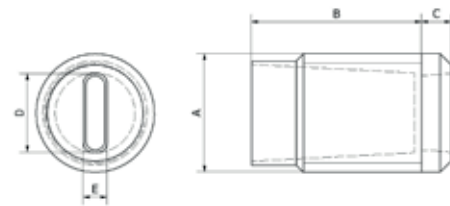
Blasting Plug

SR F-0013

LDPE RED



- Threading plug designed for blasting and wet painting applications
- Prevents shot blasting grit from getting caught at the thread entrance
- Provide a minimal shadow when painting
- Slot for screwdrivers provide easy mounting and disassembly
- Temperature: Min -30°C, Max. +50°C



Part Number	Dimensions (mm)					Standard Pack Quantity
	A	B	C	D	E	
8088000	M16 x 2	23.0	4.0	10.0	3.0	1000

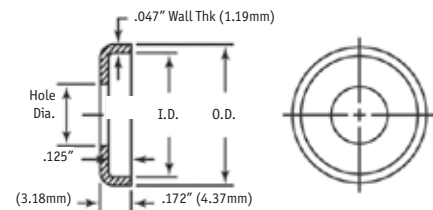
Hose Washer Cap

SR 5758

LDPE - Yellow

TPE - Black

- Applied on hose and tube ends in order to prevent them from sliding over the fittings



Part Number		Dimensions (mm)			Standard Pack Quantity
LDPE	TPE	Hole Ø	I.D.	O.D.	
W6A	W6C	8.1	15.0	17.4	19000
W8A	W8C	11.3	19.3	21.8	12000
W10A	W10C	14.6	22.1	24.6	10000
W13A	W13C	17.8	26.4	29.0	6500
W15A	W15C	21.0	29.6	32.2	5000
W20A	W20C	26.7	33.0	35.6	5000

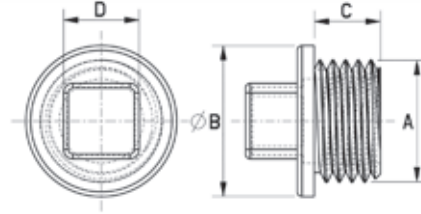
THREADED PLUGS

Pipe Plug

SR 5757

PA 6 Natural

- Strong plug for inner gas threads of 1/8" up to 1 1/4"
- Resistant to most chemicals, moisture and salt water



Part Number	Dimensions (mm)				Standard Pack Quantity
	A	B	C	D	
075012500001	G 3/8	13.0	7.0	9.0	50
075025000001	G 1/2	16.0	7.0	11.0	50
075037500001	G 3/4	21.0	8.0	12.5	50
075050000001	G 1	27.0	9.0	14.0	50
075075000001	G 1 1/4	34.0	11.0	17.0	50
075100000001	G 1 1/2	41.0	11.0	19.0	50
075125000001	G 1 3/4	53.0	11.0	24.0	50

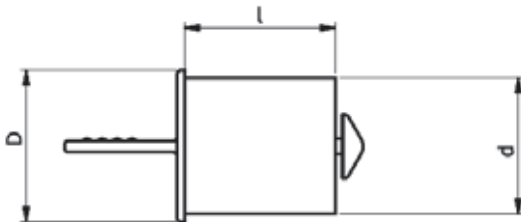
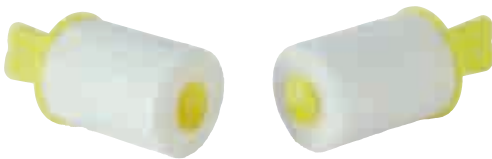
Fluid Absorption Plug

SR 1004

Yellow PP/Bi-Component Fibre

- Control fluid excess residue by absorption to hold and not leak preventing damage and contamination
- Unique design allowing quick, easy installation and removal to save time and cost

- Safer, easier and cleaner than a conventional plug, the product leaves no residue in the thread/hole
- Suitable for Metric and Imperial size threads including plain bore holes
- Absorbs a variety of substances with inherent chemical resistance
- More sizes available against leadtime and MOQ*



Part Number	To Fit Thread Size			Dimensions (mm)			Absorption ml**	Standard Pack Quantity
	Metric	BSP	UNF	D	d	l		
1342611	M10 x 1.5	1/8" x 28	3/16" x 24	10.5	8.5	15.0	0.54	1000
1342612*	M10 x 1.5	1/8" x 28	3/16" x 24	10.5	8.5	25.0	0.89	1000
1342613	M12 x 1.5	-	-	12.5	10.5	15.0	0.86	1000
1342614*	M12 x 1.5	-	-	12.5	10.5	25.0	1.43	1000
1342615	-	1/4" x 19	-	14.5	11.5	15.0	1.05	1000
1342616*	-	1/4" x 19	-	14.5	11.5	25.0	1.76	1000
1342617*	M14 x 1.5	-	9/16" x 18	14.5	12.5	15.0	1.02	1000
1349120	M14 x 1.5	-	9/16" x 18	14.5	12.5	20.0	1.36	1000
1342618	M14 x 1.5	-	9/16" x 18	14.5	12.5	25.0	1.70	1000
1342619	M16 x 1.5	-	5/8" x 18	17.0	14.5	15.0	1.48	1000
1342620	M16 x 1.5	-	5/8" x 18	17.0	14.5	25.0	2.46	1000
1342621*	M18 x 1.5	-	-	19.0	17.0	15.0	2.14	1000
1342622	M18 x 1.5	-	-	19.0	17.0	25.0	3.57	1000
1342623*	-	3/8" x 19	-	17.0	15.0	15.0	1.65	1000
1342624	-	3/8" x 19	-	17.0	15.0	25.0	2.75	1000
1349119	-	-	-	20.0	18.0	20.0	3.25	1000
1342625	M20 x 1.5	1/2" x 14	-	20.0	18.5	25.0	4.32	1000
1342626	M22 x 1.5	5/8" x 14	-	23.0	21.0	25.0	5.60	1000
1342627	-	3/4" x 14	1 1/16" x 12	27.0	24.6	25.0	8.04	1000
1342628	-	1" x 11	-	33.0	30.5	35.0	17.68	1000

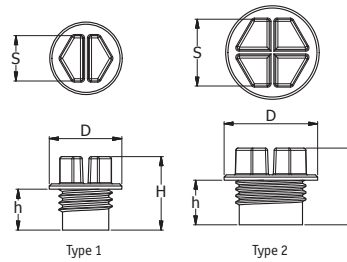
**Typical values and will vary with different substances, viscosity and applications

Slottex Plugs

SR 1005

Yellow HDPE

- Can be applied or removed with screwdriver, spanner or socket; manually or with power tool



Metric

Part Number	Thread Size	Type Insert	Dimensions (mm)				Standard Pack Quantity
			D	H	h	S	
110860	M8 x 1	1	12.0	14.2	7.0	7.0	5000
110861	M10 x 1	1	14.0	13.2	6.0	9.0	5000
110862	M12 x 1	1	16.0	16.2	9.0	10.0	5000
110863	M12 x 1.5	1	16.0	16.2	9.0	10.0	5000
110864	M14 x 1.5	2	19.0	16.2	9.0	13.0	5000
110865	M16 x 1.5	2	21.0	17.2	10.0	15.0	3000
110866	M18 x 1.5	2	24.0	18.2	10.0	17.0	3000
110867	M20 x 1.5	2	16.0	20.2	12.0	19.0	3000

BSP/Gas

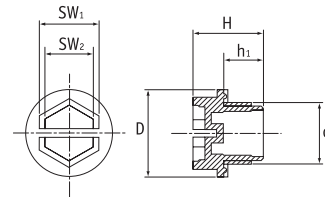
Part Number	Thread Size	Type Insert	Dimensions (mm)				Standard Pack Quantity
			D	H	h	S	
110868	½" x 28	1	14.0	16.2	9.0	9.0	5000
110869	¾" x 19	2	19.0	16.2	9.0	13.0	5000
110870	¾" x 19	2	21.0	17.2	10.0	15.0	5000
110871	½" x 14	2	26.0	20.2	12.0	19.0	3000
110872	¾" x 14	2	32.0	20.2	12.0	24.0	2000
110873	1" x 11	2	40.0	20.2	12.0	30.0	1500
110874	1¼" x 11	2	49.0	20.2	12.0	36.0	800

Sealing Slottex Plugs

SR 1007

Yellow PA 6

- Double sealing ring on underside of flange provides positive sealing
- Quick and easy to fit using screwdriver, spanner, socket or allen key
- Can be tightened manually or with power tool
- Head designed not to trap liquid



Metric Thread

Part Number	Thread Size (d1)	Dimensions (mm)						Standard Pack Quantity
		D	H	h1	SW1	SW2		
462836	M8 x 1	12.5	15.5	8.0	7.0	4.0	5000	
462837	M10 x 1	14.5	16.5	9.0	9.0	6.0	5000	
466973	M12 x 1	17.0	16.5	9.0	10.0	7.0	500	
466974	M10 x 1.5	14.5	16.5	9.0	9.0	6.0	500	
462838	M12 x 1.5	17.0	16.5	9.0	10.0	7.0	5000	
110836	M14 x 1.5	19.0	17.5	10.0	13.0	10.0	1000	
110837	M16 x 1.5	22.3	17.5	9.3	15.0	12.0	500	
110838	M18 x 1.5	24.0	17.5	9.0	17.0	14.0	500	
462842	M20 x 1.5	26.0	17.5	10.0	19.0	16.0	3000	
110839	M22 x 1.5	28.0	17.5	10.0	21.0	18.0	500	
466975	M24 x 1.5	30.0	17.5	10.0	24.0	21.0	500	
466976	M26 x 1.5	32.0	20.5	12.0	24.0	21.0	500	
466977	M27 x 1.5	33.0	20.5	12.0	24.0	21.0	500	
466978	M28 x 1.5	34.0	20.5	12.0	24.0	21.0	500	
466979	M30 x 1.5	38.0	20.5	12.0	24.0	21.0	500	
466980	M32 x 1.5	40.0	20.5	12.0	24.0	21.0	500	
466981	M36 x 1.5	45.0	20.5	12.0	24.0	21.0	500	
466982	M38 x 1.5	48.0	20.5	12.0	24.0	21.0	250	
466983	M45 x 1.5	52.0	21.5	12.0	30.0	27.0	250	
466985	M27 x 2	33.0	22.0	13.5	24.0	21.0	250	
466986	M30 x 2	38.0	22.0	13.5	24.0	21.0	250	
466987	M33 x 2	40.0	22.0	13.5	24.0	21.0	250	
466988	M36 x 2	45.0	22.0	13.5	24.0	21.0	250	
466989	M42 x 2	50.0	22.0	13.5	30.0	27.0	250	
466990	M45 x 2	52.0	22.0	13.5	30.0	27.0	125	
466991	M48 x 2	55.0	23.0	13.5	30.0	27.0	100	
466992	M52 x 2	60.0	23.0	13.5	30.0	27.0	100	

BSP Thread

Part Number	Thread Size (d1)	Dimensions (mm)					Standard Pack Quantity
		D	H	h1	SW1	SW2	
110845	½" x 28	16.0	15.5	8.0	12.0	9.0	1000
110840	¾" x 19	19.0	17.5	10.0	13.0	10.0	1000
110841	¾" x 19	22.0	17.5	10.0	15.0	12.0	500
110842	½" x 14	27.0	19.5	12.0	19.0	16.0	500
466993	¾" x 14	29.5	19.5	12.0	22.0	19.0	500
110843	¾" x 14	32.0	19.5	12.0	24.0	21.0	250
110844	1" x 11	40.0	22.5	15.0	30.0	27.0	100
462853	1¼" x 11	50.0	22.5	15.0	36.0	33.0	1000
466995	1½" x 11	56.0	24.0	15.0	41.0	37.0	250
466996	1¾" x 11	62.0	24.0	15.0	50.0	46.0	250
466997	2" x 11	68.0	24.0	15.0	55.0	51.0	100

UNF Thread

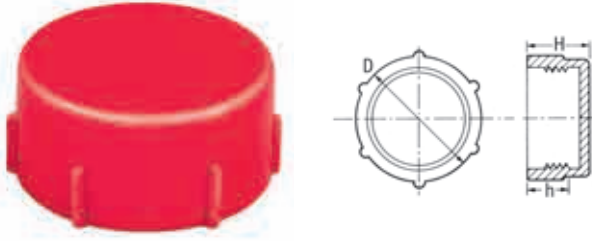
Part Number	Thread Size (d1)	Dimensions (mm)					Standard Pack Quantity
		D	H	h1	SW1	SW2	
466948	¾" x 24	16.0	17.5	10.0	9.0	6.0	5000
466949	7/8" x 20	17.0	17.5	10.0	10.0	7.0	5000
466950	½" x 20	19.0	17.5	10.0	13.0	10.0	3000
466951	9/16" x 18	20.5	17.5	10.0	13.0	10.0	3000
466952	¾" x 18	22.0	17.5	10.0	15.0	12.0	3000
466953	¾" x 16	26.0	17.5	10.0	19.0	16.0	3000
466954	7/8" x 14	28.5	19.5	12.0	21.0	18.0	3000
466955	1" x 14	31.5	19.5	12.0	24.0	21.0	1000
466956	1 1/16" x 12	33.0	19.5	12.0	24.0	21.0	1000
466958	1 3/16" x 12	40.0	22.5	15.0	30.0	27.0	1000
466959	1 5/8" x 12	47.5	22.5	15.0	36.0	33.0	500
466960	1 7/8" x 12	54.0	22.5	15.0	36.0	33.0	500

Threaded Protection Caps

SR 1018

Red LDPE

- Used throughout the automotive, fluid power and engineering industries
- Protect threaded components from dust, moisture and damage



Metric

Part Number	Thread Size	Dimensions (mm)			Standard Pack Quantity
		D	H	h	
12100	M8 x 1	9.9	10.0	7.0	500
12101	M10 x 1	11.9	10.0	7.5	500
12102	M12 x 1	13.8	12.0	9.5	500
12103	M12 x 1.5	14.0	12.0	9.5	500
12104	M14 x 1.5	15.9	12.0	9.5	500
12650	M14 x 1.5	16.0	20.6	9.2	500
12105	M16 x 1.5	17.9	12.0	9.5	500
12651	M16 x 1.5	18.0	21.0	9.0	500
12106	M18 x 1.5	19.7	14.0	9.5	500
12107	M20 x 1.5	21.9	14.0	9.5	500
12108	M22 x 1.5	24.3	13.8	11.5	500
12845	M22 x 1.5	24.4	24.5	17.5	250
12109	M24 x 1.5	26.2	14.0	11.5	250
12110	M25 x 1.5	27.2	14.0	11.5	250
12111	M26 x 1.5	28.3	14.0	11.5	250
12967	M28 x 1.5	32.0	14.0	12.4	250
12122	M30 x 2	34.0	14.0	11.5	150
12123	M36 x 2	38.8	16.0	13.5	150
12124	M42 x 2	44.5	16.0	13.5	100
12126	M52 x 2	54.7	16.0	13.5	100

UNF/JIC

Part Number	Thread Size	Dimensions (mm)			Standard Pack Quantity
		D	H	h	
10251	3/8" x 24	11.0	8.3	4.0	500
12652	7/16" x 24	13.3	13.7	7.8	500
10332	7/16" x 20	13.3	12.9	8.0	500
10528	1/2" x 20	14.5	13.5	9.5	500
11041	9/16" x 18	16.5	13.5	9.5	500
10653	5/8" x 18	18.2	15.6	7.5	500
12847	3/4" x 16	21.7	13.8	9.5	500
12825	13/16" x 16	23.3	15.3	9.3	250
11089	7/8" x 14	24.9	20.2	14.0	250
12075	7/8" x 18	25.3	20.0	14.0	250
12826	1" x 14	27.6	17.2	12.0	250
10685	1 1/16" x 12	29.4	19.0	11.0	200
10163	1 3/16" x 12	32.7	19.1	13.0	150
10151	1 5/16" x 12	36.4	22.2	14.5	100
12654	1 3/8" x 12	37.4	24.5	10.5	100
10185	1 7/8" x 12	38.9	21.7	15.2	100
11053	1 5/8" x 12	44.8	22.0	14.0	100
11804	1 7/8" x 12	50.3	25.0	15.0	100

BSP/Gas

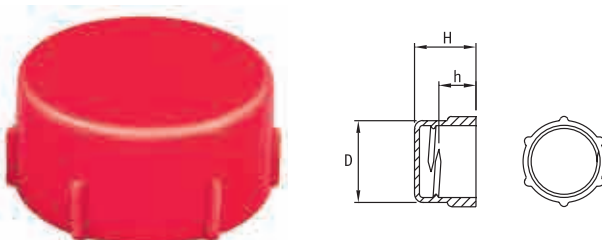
Part Number	Thread Size	Dimensions (mm)			Standard Pack Quantity
		D	H	h	
10392	1/8" x 28	11.8	12.0	6.5	500
10559	1/4" x 19	14.8	11.0	8.0	500
10104	3/8" x 19	18.7	11.3	7.4	500
10198	1/2" x 14	23.2	13.5	7.0	500
11157	5/8" x 14	25.4	15.7	10.0	500
10205	3/4" x 14	29.4	17.7	11.2	250
10970	7/8" x 14	32.4	19.5	12.5	150
10204	1" x 11	36.0	19.0	14.5	100
10167	1 1/4" x 11	44.4	19.8	13.0	100
10432	1 1/2" x 11	50.3	20.5	14.0	100
10968	2" x 11	61.9	21.0	15.0	100
12905	2 1/2" x 11	77.9	27.6	19.0	50

Quick-Fit Caps

SR 1161

Red LDPE

- Fewer thread forms allow quick application



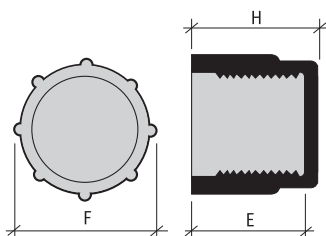
Part Number	Thread Size	Dimensions (mm)			Standard Pack Quantity
		D	H	h	
464147	M12 x 1.5	14.0	12.0	7.5	5000
464148	M14 x 1.5	16.0	12.0	7.5	5000
464150	M16 x 1.5	18.0	12.0	7.5	5000
464151	M16 x 1.5	18.0	21.0	6.5	5000
464152	M18 x 1.5	20.0	14.0	9.5	4000
464153	M20 x 1.5	22.0	14.0	9.5	4000
464154	M22 x 1.5	24.5	14.0	9.5	2000
464155	M24 x 1.5	26.5	14.0	9.5	2000
464156	M26 x 1.5	28.5	14.0	9.5	2000
464157	M28 x 1.5	32.0	14.0	9.5	2000
464158	M30 x 2.0	34.0	14.0	9.0	1500

Threaded Protection Caps - Long

SR F-0014

HDPE Yellow

- Long profile protection cap offering additional threading turns
- Suitable for BSP GAS and UNF threads
- Temperature: Min. -30°C, Max. +80°C



Part Number	Thread BSP GAS	Dimensions (mm)			Standard Pack Quantity
		E	F	H	
9161000	1/8" x 28	15.0	15.0	17.5	1000
9162000	1/4" x 19	18.5	17.5	21.0	1000
9163000	3/8" x 19	20.5	22.0	23.0	1000
9164000	1/2" x 14	23.0	27.0	25.0	500
9165000	1/2" x 14	30.0	27.5	32.0	1000
9166000	5/8" x 14	23.0	29.5	25.0	500
9167000	3/4" x 14	26.0	33.0	28.0	500
9168000	7/8" x 14	26.0	37.0	28.0	500
9169000	1" x 11	26.5	40.0	28.0	250
9170000	1 1/4" x 11	26.0	49.0	28.0	250
9171000	1 1/2" x 11	26.5	54.0	28.5	250
9361000	0.6" x 19	21.0	21.0	23.0	500
9362000	0.750" x 14	22.5	24.0	25.0	500

Part Number	Thread UNF	Dimensions (mm)			Standard Pack Quantity
		E	F	H	
9221000	1/4" x 28	15.0	11.0	17.0	1000
9222000	5/16" x 24	17.0	13.5	19.5	1000
9222500	3/16" x 32	13.0	8.0	14.0	1000
9223000	3/8" x 24	17.0	15.0	19.0	1000
9224000	7/16" x 20	18.0	17.0	22.0	1000
9225000	1/2" x 20	19.5	19.0	22.0	1000
9225100	1/2" x 20	17.0	19.0	18.5	1000
9226000	9/16" x 18	21.5	21.0	24.0	1000
9227000	5/8" x 18	21.0	21.5	23.0	500
9228000	1 1/16" x 16	23.0	24.0	25.0	500
9229000	3/4" x 16	23.0	26.0	25.0	500
9230000	1 3/16" x 16	26.0	28.0	27.5	500
9231000	7/8" x 14	26.5	29.0	28.0	500
9232000	1" x 16	25.5	32.0	28.0	250
9233000	1 1/8" x 16	26.0	34.0	28.0	250
9234000	1 1/4" x 12	25.0	34.0	28.0	250
9235000	1 3/16" x 12	25.0	37.0	27.0	250
9236000	1 5/16" x 12	26.5	40.0	28.0	250
9237000	1 3/8" x 12	26.5	42.0	28.0	250
9238000	1 1/2" x 12	26.0	45.0	28.0	100
9239000	1 5/8" x 12	26.0	48.0	28.0	100
9240000	1 3/4" x 12	26.0	51.0	28.0	100
9241000	1 7/8" x 12	26.5	55.0	28.5	100

QUESTIONS? GIVE US A CALL

Our Customer Service advisors can also help you find the right product for your application.

Call 0845 758 5070

www.essentracomponents.co.uk



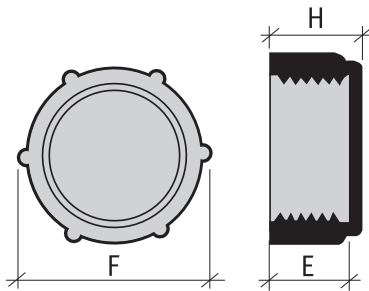
Threaded Protection Caps – Short

F-0015

Yellow HDPE



- Short profile cap to protect against dirt and contamination during assembly, transportation, storage and painting
- Suitable for BSP GAS, UNF and METRIC threads
- Used in the piping/plumbing industry and in mechanical engineering
- Temperature: Min. -30°C, Max. +80°C



Part Number	Thread BSP GAS	Dimensions (mm)			Standard Pack Quantity
		E	F	H	
9101000	1/8" x 28	10.0	15.0	13.0	1000
9102000	1/4" x 19	11.0	19.0	12.5	1000
9103000	3/8" x 19	11.5	23.0	12.5	1000
9104000	1/2" x 14	12.0	27.0	13.5	1000
9105000	5/8" x 14	12.5	29.0	14.0	500
9106000	3/4" x 14	14.5	34.0	15.0	500
9107000	7/8" x 14	15.5	38.0	17.0	500
9108000	1" x 11	18.0	40.0	20.0	250
9109000	1 1/4" x 11	23.5	49.0	25.0	250
9110000	1 1/2" x 11	16.0	48.0	18.0	250
9111000	1 3/4" x 11	27.0	55.0	28.0	100
9111500	1 3/4" x 11	26.0	59.0	27.5	100
9112000	2" x 11	26.5	67.0	28.5	100

Part Number	Thread UNF	Dimensions (mm)			Standard Pack Quantity
		E	F	H	
9301000	1/2" x 20	12.5	20.0	14.5	1000
9302000	5/8" x 18	13.0	21.0	15.0	1000
9303000	3/4" x 18	16.5	21.0	18.0	500
9304000	1 1/16" x 16	16.5	24.0	19.0	500
9305000	1 1/8" x 16	8.5	23.0	10.0	500
9305500	1 3/16" x 16	20.0	27.0	22.0	500
9306000	3/4" x 16	17.0	25.0	19.0	500
9307000	7/8" x 14	18.0	29.0	20.0	500
9307500	1 1/8" x 16	20.0	30.0	22.0	500
9308000	1 1/16" x 12	21.0	32.0	23.0	250
9309000	1 3/16" x 12	21.0	36.5	23.0	250
9310000	1 3/8" x 12	14.0	41.0	16.0	250
9311000	1 1/2" x 12	20.0	44.5	22.5	100

Part Number	Thread Metric	Dimensions (mm)			Standard Pack Quantity
		E	F	H	
9001000	M8 x 1	8.0	12.0	10.0	1000
9002000	M10 x 1	10.0	15.0	12.0	1000
9003000	M12 x 1	10.5	17.0	12.5	1000
9004000	M12 x 1.5	10.5	17.5	12.5	1000
9005000	M14 x 1.5	10.5	19.0	13.0	1000
9006000	M16 x 1	8.1	22.0	11.0	1000
9007000	M16 x 1.5	11.0	22.0	12.2	1000
9008000	M18 x 1.5	10.5	24.5	13.0	1000
9009000	M20 x 1.5	11.0	26.0	13.5	500
9010000	M22 x 1.5	12.0	28.0	14.0	500
9011000	M24 x 1.5	12.0	29.5	13.5	500
9012000	M25 x 1.5	12.0	31.0	13.5	500
9013000	M26 x 1.5	12.5	33.0	14.5	500
9014000	M27 x 1.5	13.0	34.0	15.0	500
9014100	M29 x 1.5	13.0	35.5	15.2	500
9015000	M30 x 1.5	13.0	36.0	15.0	250
9016000	M32 x 1.5	13.0	39.0	15.0	250
9017000	M36 x 1.5	14.5	42.5	16.0	250
9018000	M38 x 1.5	15.0	44.0	17.0	250
9019000	M40 x 1.5	15.0	46.0	17.0	250
9020000	M45 x 1.5	16.0	52.0	18.0	250
9021000	M50 x 1.5	17.0	57.0	18.5	100
9022000	M52 x 1.5	17.0	59.0	19.0	100
9023000	M55 x 1.5	17.0	61.0	18.5	100
9024000	M62 x 1.5	17.0	69.0	19.0	100
9025000	M27 x 2	13.0	34.0	14.5	250
9026000	M30 x 2	13.0	36.0	15.0	250
9027000	M30 x 2	30.0	36.0	31.5	250
9029000	M36 x 2	15.0	42.0	17.0	250
9029500	M40 x 2	15.5	46.2	16.7	250
9030000	M42 x 2	15.0	48.0	16.5	250
9031000	M45 x 2	15.0	51.0	16.5	100
9032000	M52 x 2	17.0	58.0	19.0	100

Threaded Sealing Caps

SR 1126

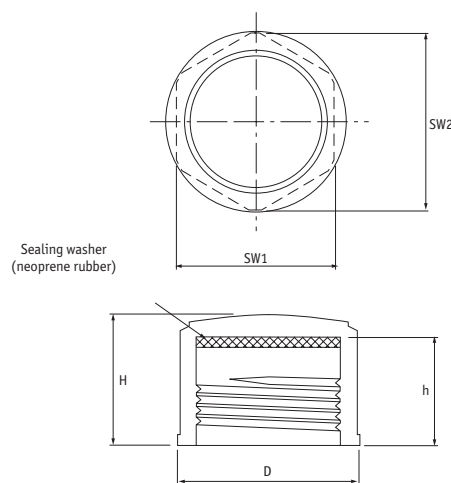
Yellow HDPE

- Tough HDPE material reduces potential shearing
- Internal neoprene rubber sealing disk, which limits fluid leakage
- Recommended to be tightened by hand
- Hexagonal head enables the cap to be applied or removed by spanner or socket at a low torque



Metric

Part Number	To Fit Thread Size	Dimensions (mm)					Standard Pack Quantity
		D	H	h1	SW1	SW2	
467033	M8 x 1	12.0	13.0	11.0	10.0	11.0	500
467034	M10 x 1	14.2	13.0	11.0	12.0	13.2	500
467035	M12 x 1	16.5	13.0	11.0	14.0	15.4	500
467036	M12 x 1.5	16.5	15.0	13.0	14.0	15.4	500
467037	M14 x 1.5	18.5	15.0	13.0	16.0	17.5	500
467038	M16 x 1.5	21.0	15.0	13.0	18.0	19.7	500
467039	M18 x 1.5	23.0	15.0	13.0	20.0	21.9	500
467040	M20 x 1.5	25.0	15.0	13.0	22.0	24.1	500
467041	M22 x 1.5	27.5	15.0	13.0	24.0	26.3	250
467042	M24 x 1.5	30.0	15.0	13.0	26.0	28.5	250
467043	M25 x 1.5	31.0	15.0	13.0	27.0	29.6	250
467044	M26 x 1.5	32.0	15.0	13.0	28.0	30.7	250
467045	M28 x 1.5	34.0	15.0	13.0	30.0	32.9	250
467046	M30 x 1.5	36.5	15.0	13.0	32.0	35.1	250
467047	M30 x 2	36.5	17.0	15.0	32.0	35.1	250
467048	M36 x 1.5	44.5	16.0	14.0	39.0	42.8	100
467049	M36 x 2	44.5	18.0	16.0	39.0	42.8	100
467050	M42 x 2	51.0	18.5	16.0	45.0	49.4	100
467051	M45 x 1.5	54.5	16.5	14.0	48.0	52.6	100
467052	M45 x 2	54.5	18.5	16.0	48.0	52.6	100
467053	M52 x 2	62.0	18.5	16.0	55.0	60.3	100



UNF

Part Number	To Fit Thread Size	Dimensions (mm)					Standard Pack Quantity
		D	H	h1	SW1	SW2	
467054	¼" x 28	10.0	13.5	11.5	8.0	8.8	500
467055	⅜" x 24	13.0	14.5	12.5	11.0	12.1	500
467056	⅜" x 24	15.5	14.5	12.5	13.0	14.3	500
467057	⅞" x 20	15.5	15.0	13.0	13.0	14.3	500
467058	½" x 20	17.5	15.0	13.0	15.0	16.5	500
467059	⅝" x 18	18.5	15.5	13.5	16.0	17.5	500
467060	⅝" x 18	21.0	15.5	13.5	18.0	19.7	500
467061	¾" x 16	24.0	16.5	14.5	21.0	23.0	500
467062	⅞" x 16	26.5	16.5	14.5	23.0	25.2	500
467063	⅞" x 18	27.5	15.5	13.5	24.0	26.3	500
467064	⅞" x 14	27.5	17.5	15.5	24.0	26.3	250
467065	1" x 14	31.0	17.5	15.5	27.0	29.6	250
467066	1 ⅛" x 12	34.5	18.5	16.5	30.0	32.9	250
1258285	1 ⅜" x 12	36.5	18.5	16.5	32.0	35.1	250
467068	1 ⅝" x 12	41.0	18.5	16.5	36.0	39.5	250
1258286	1 ⅝" x 12	43.0	18.5	16.5	38.0	41.7	250
467070	1 ⅞" x 12	45.5	18.5	16.5	40.0	43.9	250
467071	1 ⅞" x 12	51.0	19.0	16.5	45.0	49.4	100
467072	1 ¾" x 16	54.5	17.0	14.5	48.0	52.6	100
467073	1 ⅞" x 12	59.0	19.0	16.5	52.0	57.0	100

BSP

Part Number	To Fit Thread Size	Dimensions (mm)					Standard Pack Quantity
		D	H	h1	SW1	SW2	
467074	⅙" x 28	14.0	13.0	11.0	12.0	13.2	500
467075	⅙" x 19	17.5	15.0	13.0	15.0	16.5	500
467076	⅙" x 19	22.0	15.0	13.0	19.0	20.8	500
467077	⅙" x 14	27.0	17.0	15.0	24.0	26.0	500
467078	⅙" x 14	29.0	17.0	15.0	25.0	27.4	500
1258286	⅙" x 14	32.0	17.0	15.0	28.0	30.7	250
467080	⅙" x 14	36.0	17.0	15.0	32.0	35.1	250
467081	1" x 11	41.0	19.0	17.0	36.0	39.5	250
467082	1 ¼" x 11	51.0	19.0	17.0	45.0	49.4	250
467083	1 ½" x 11	56.0	19.5	17.0	50.0	54.8	100
467084	2" x 11	71.0	19.5	17.0	63.0	69.1	100
467085	2 ¼" x 11	80.0	19.5	17.0	70.0	76.8	100
467086	2 ½" x 11	90.0	19.5	17.0	80.0	87.7	100